

# CEE Wall mounted plugs

## Wall mounted plug IP44

	16 Amp			32 Amp		
	3	4	5	3	4	5
a [mm]	120	121	122	131	131	132
Height [mm]	76	76	79	82	82	85
M [mm]	25	25	25	25	25	25
: L U H 2 H [ L E Φ H [mmO [mm	1-2,5			2,5-6		
Wire solid [mm <sup>2</sup> ]	1-4			2,5-10		
Contact screws [Ncm]	100			110		
Weight [g]	173	188	205	212	232	253

- with screw terminals
- housing material: PA6
- contacts: brass
  - to order nickel-plated contacts please add a "v" e.g. 515-6v
- top and rear entry
- incl. threaded cable grommet

IP44 splashproof

## Wall mounted plug IP44 TT

	16 Amp		32 Amp	
	3	5	4	5
a [mm]	120	122	131	132
Height [mm]	76	79	82	85
M [mm]	25	25	25	25
: L U H 2 H [ L E Φ H [mmO [mm	1-2,5		2,5-6	
Wire solid [mm <sup>2</sup> ]	1-4		2,5-10	
Weight [g]	176	209	238	261

- screwless connection technology
- housing material: PA6
- contacts: brass
  - to order nickel-plated contacts please add a "v" e.g. 515-6TTv
- top and rear entry
- incl. threaded cable grommet

IP44 splashproof

## Wall mounted plug with lid IP44

	16 Amp			32 Amp		
	3	4	5	3	4	5
a [mm]	127	128	128	137	137	140
Height [mm]	92	94	97	99	99	104
M [mm]	25	25	25	25	25	25
: L U H 2 H [ L E Φ H [mmO [mm	1-2,5			2,5-6		
Wire solid [mm <sup>2</sup> ]	1-4			2,5-10		
Contact screws [Ncm]	100			110		
Weight [g]	230	245	263	272	292	316

- with screw terminals
- with hinged lid
- housing material: PA6
- contacts: brass
  - to order nickel-plated contacts please add a "v" e.g. 515-6dv
- top and rear entry
- incl. threaded cable grommet

IP44 splashproof

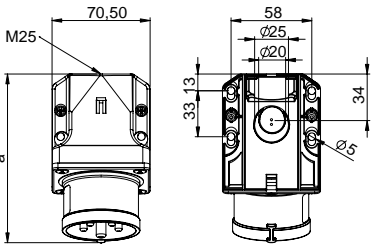
## Wall mounted plug with lid IP44

	16 Amp		32 Amp	
	5	5	5	5
a [mm]	141	151	112	112
Height [mm]	99	112	112	112
M* [mm]	25	25	25	25
: L U H 2 H [ L E Φ H [mmO [mm	1-2,5		2,5-6	
Wire solid [mm <sup>2</sup> ]	1-4		2,5-10	
Contact screws [Ncm]	100		110	
Weight [g]	257	310		

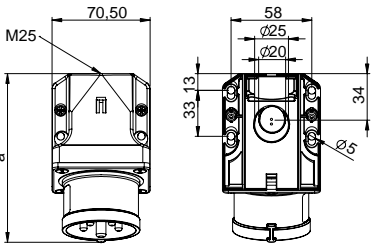
- with screw terminals
- one-piece housing
- with hinged lid
- housing material: PA6
- contacts: brass
  - to order nickel-plated contacts please add a "v" e.g. 515-6kdv
- top and rear entry
- incl. threaded cable grommet

IP44 splashproof

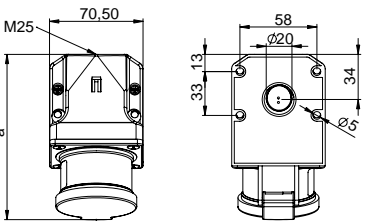
\*M32 optional on request available



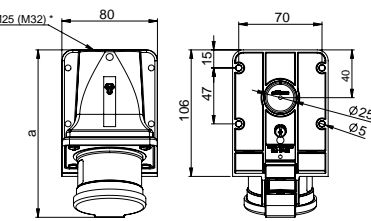
angle=15°



angle=15°



angle=15°



angle=15°

110V~

Amp.	Poles	pack. unit	50/60Hz	50/60Hz	50/60Hz	50/60Hz	100-300Hz	301-500Hz
			4h	3p=6h 4p+5p= 9h	3p= 9h 4p+5p= 6h	7h	10h	2h
			Cat.No.	Cat.No.	Cat.No.	Cat.No.	Cat.No.	Cat.No.
16	3	10	513-4	513-6	513-9	513-7	513-10	513-2
16	4	10	514-4	514-9	514-6	514-7	514-10	514-2
16	5	10	515-4	515-9	515-6	515-7	515-10	515-2
32	3	10	523-4	523-6	523-9	523-7	523-10	523-2
32	4	10	524-4	524-9	524-6	524-7	524-10	524-2
32	5	10	525-4	525-9	525-6	525-7	525-10	525-2



515-6

Amp.	Poles	pack. unit	50/60Hz	50/60Hz	50/60Hz	50/60Hz	100-300Hz	301-500Hz
			4h	3p=6h 4p+5p= 9h	3p= 9h 4p+5p= 6h	7h	10h	2h
			Cat.No.	Cat.No.	Cat.No.	Cat.No.	Cat.No.	Cat.No.
16	3	10	513-4TT	513-6TT	513-9TT			
16	5	10	515-4TT	515-9TT	515-6TT			
32	4	10	524-4TT	524-9TT	524-6TT			
32	5	10	525-4TT	525-9TT	525-6TT			



515-6TT

Amp.	Poles	pack. unit	50/60Hz	50/60Hz	50/60Hz	50/60Hz	100-300Hz	301-500Hz
			4h	3p=6h 4p+5p= 9h	3p= 9h 4p+5p= 6h	7h	10h	2h
			Cat.No.	Cat.No.	Cat.No.	Cat.No.	Cat.No.	Cat.No.
16	3	10	513-4d	513-6d	513-9d	513-7d	513-10d	513-2d
16	4	10	514-4d	514-9d	514-6d	514-7d	514-10d	514-2d
16	5	10	515-4d	515-9d	515-6d	515-7d	515-10d	515-2d
32	3	10	523-4d	523-6d	523-9d	523-7d	523-10d	523-2d
32	4	10	524-4d	524-9d	524-6d	524-7d	524-10d	524-2d
32	5	10	525-4d	525-9d	525-6d	525-7d	525-10d	525-2d



515-6d

Amp.	Poles	pack. unit	50/60Hz	50/60Hz	50/60Hz	50/60Hz	100-300Hz	301-500Hz
			4h	3p=6h 4p+5p= 9h	3p= 9h 4p+5p= 6h	7h	10h	2h
			Cat.No.	Cat.No.	Cat.No.	Cat.No.	Cat.No.	Cat.No.
16	5	10	515-4kd	515-9kd	515-6kd	515-7kd	515-10kd	515-2kd
32	5	10	525-4kd	525-9kd	525-6kd	525-7kd	525-10kd	525-2kd



525-6kd

Accessories see page 50

