

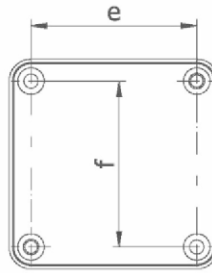
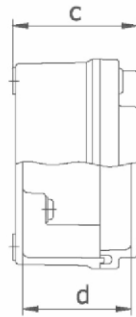
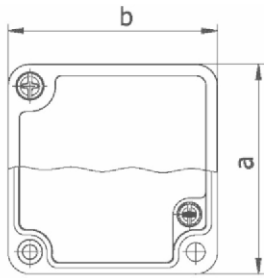
### ALUBOX Alumínium kötődobozok / Aluminium junction boxes

RAL  
7001

IP67

- Anyagminőségi szabvány: Etial 150 ( ISO GAlSi12Cu )
- Csavar adatai: rozsdamentes acél (Inox)
- Fedél tömítés: Hosszú élettartamú poliuretán tömítések
- Környezeti hőmérséklet: - 40°C ... +140°C
- Színe: Szürke
- mechanikai védetség: (NF EN 50102)
- IK Code : 09 (10 Joule)

- Material properties: Etial 150 (ISO GAlSi12Cu)
- Screw features: Stainless steel (Inox) & Captive screws
- Cover seals: Long life Polyurethane seals used on covers
- Ambient temperature: - 40°C ... +140°C
- Color: gray
- Degree of protection against mechanical impacts (NF EN 50102) IK Code : 09 (10 Joule)



Típus / types	Kivitel / Type	Méret / Dimensions (mm)	Méret / Dimensions (mm)					
			a	b	c	d	e	f
502	csavaros / with screw lid	65 x 65 x 40	65	65	40	34,8	53	53
503	csavaros / with screw lid	100 x 65 x 40	65	100	40	34,5	88	35
504	csavaros / with screw lid	80 x 80 x 60	80	80	60	54,5	68	50
505	csavaros / with screw lid	130 x 80 x 60	80	130	60	54,5	118	50
506	csavaros / with screw lid	100 x 100 x 73	100	100	73	57	87	87
508	csavaros / with screw lid	130 x 100 x 73	100	130	73	67	116	66
511	csavaros / with screw lid	130 x 130 x 90	130	130	90	84	116	96
512	csavaros / with screw lid	190 x 130 x 90	130	190	90	84	176	96
514	csavaros / with screw lid	230 x 130 x 90	130	230	90	84	216	96
516	csavaros / with screw lid	160 x 160 x 90	160	160	90	84	146	126
517H	zsanéros / with opening (hinged) lid	260 x 160 x 90	160	260	90	84	246	126
518	csavaros / with screw lid	190 x 170 x 90	170	190	90	84	176	136
520H	zsanéros / with opening (hinged) lid	250 x 190 x 90	190	250	90	84	236	156
522H	zsanéros / with opening (hinged) lid	350 x 190 x 90	190	350	90	84	336	156
524H	zsanéros / with opening (hinged) lid	250 x 250 x 110	250	250	110	103	230	206
530H	zsanéros / with opening (hinged) lid	400 x 310 x 140	310	400	140	130	380	266