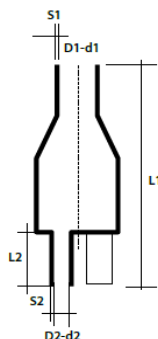


## MUFE TERMOCONTRACTABILE



**Ray  
Tech**



- Autoetansare
- Cu adeziv
- Halogen free - fara halogenuri
- Culoare : negru
- Rezistenta la rupere: 10.5 MPa (min)
- Alungire: 300% (min)
- Densitate: 1,0 - 1,3 g/cm<sup>3</sup>
- Flexibilitate la temperaturi scazute: 4h at -40°C
- Absorbție apa: maxim 0.5%



COD	DENUMIRE	CABLU Ø de la - la (mm)	CONTRACTIE Ø D1 / d1 (mm)	GROSIME S1 (mm)	CONTRACTIE Ø D2 / d2 (mm)	GROSIME S2 (mm)	LUNGIME L1 - L2 (mm)	PACK. (buc.)
44-443425-000	RAYW533	4 ... 35	38 - 17	2,7	14 - 4.5	2,5	98 - 23	1
44-519411-000	RAYW516	50 ... 150	60 - 25	3	25 - 8	2,5	165 - 50	1
44-395067-000	RAYW526	185 ... 300	80 - 38	3,5	35 - 11	3,5	185 - 55	1
44-102022-TEC	RAYW248	185 ... 500	110 - 50	4	46 - 17.5	3,5	250 - 65	1

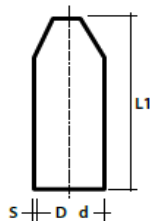


44-645763-000	RAYK033	4 ... 35	42 - 15	2,3	14 - 3.5	1,9	105 - 26	1
44-747267-000	RAYK046	50 ... 70	55 - 21	3,1	20 - 5	2,5	150 - 40	1
44-119983-000	RAYK016	95 ... 150	65 - 26	3,5	26 - 7	2,9	175 - 45	1
44-017847-000	RAYK026	185 ... 300	102 - 47	3,9	38 - 12	3	198 - 58	1

## CAPACE DE ETANSARE TERMOCONTRACTABILE



**Ray  
Tech**



- Etansare capete de cablu
- Cu adeziv
- Halogen free - fara halogenuri
- Culoare: negru
- Rezistenta la rupere: 12 MPa (min)
- Alungire: 200% (min)
- Densitate: 0,9 - 1,2 g/cm<sup>3</sup>
- Duritate: 50-70 Shore D
- Flexibilitate la temperaturi scazute: 4h at -40°C
- Absorbție apa: 0.5% max.

COD	DENUMIRE	CABLU Ø de la - la (mm)	CONTRACTIE Ø D / d (mm)	GROSIME S (mm)	LUNGIME L (mm)	PACK. (buc.)
44-334969-000	RAYL011	4 ... 8	12 - 4.0	2.0	40	1
44-821617-000	RAYL022	8 ... 17	20 - 6	2.3	55	1
44-692333-000	RAYL033	17 ... 30	35 - 16	3.0	83	1
44-547889-000	RAYL044	30 ... 45	55 - 26	3.3	103	1
44-068743-000	RAYL048	45 ... 65	75 - 36	3.3	120	1
44-190805-000	RAYL055	65 ... 95	100 - 52	3.8	140	1
44-855203-000	RAYL066	95 ... 115	120 - 60	3.8	150	1