

# sensIQ S

## The evolution of perfection.

### The reference in compact design.

Handsome addition! The sensIQ S is just as perfect in form and functional diversity as its larger role model. A look that architects like. This designer motion detector was developed specifically for wall mounting though. Being altogether more compact than its big brother, the sensIQ S nestles up against the facade, perfectly harmonising with modern, purist architecture. Its inner values are spectacular too because it comes with the same highly intelligent features and setting options as the sensIQ.



infrared sensor  
3 x 100°



3 zones scalable  
2 - 20m

**2000w**

max.



IP54



2 - 5m



2 - 2000 lux  
+ daylight operation



5 sec - 15 min

**TEACH**

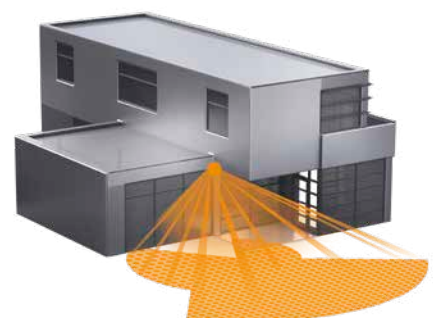
mode



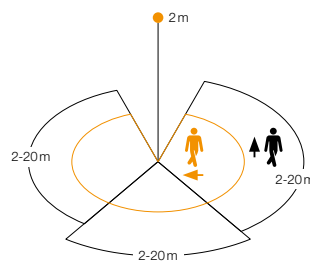
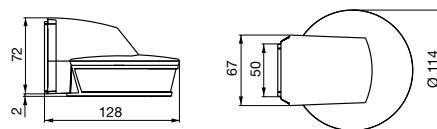
energy  
saving

**5 JAHRE**  
GARANTIE

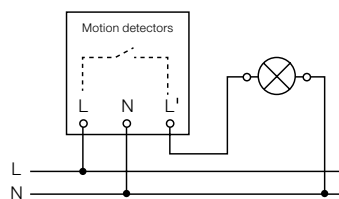
manufacturer's  
warranty



EAN sensIQ S, white	4007841 034955
EAN sensIQ S, stainless steel	4007841 034962
EAN sensIQ S, black	4007841 034979
EAN sensIQ S, anthracite	4007841 056650
EAN sensIQ S, KNX, white	4007841 059613
EAN sensIQ S, KNX, stainless steel	4007841 059590
EAN sensIQ S, KNX, black	4007841 059606
EAN sensIQ S KNX, anthracite	4007841 059583
Type	Motion detector
Dimensions (H x W x D)	114x74x128mm
Power supply	100-240V, 50/60Hz (max. 2.5mm <sup>2</sup> )
KNX power supply	KNX bus voltage
Sensor type	Passive infrared
Where to use	Indoors and outdoors
Installation	Wall, corner
Mounting height	2-5m
Recommended mounting height	2m
Output (resistive load, e.g. ordinary lamp)	max. 2000 W at 230 V
	max. 1200W at 120V
Output (uncorrected, inductive, cos $\phi$ = 0.5, e.g. fluorescent lamps)	max. 1000VA at 230V
	max. 500VA at 120V
Inrush current	max. 800 A / 200 $\mu$ s
Electronic ballast	30x (1 x 18W), 25x (2 x 18W)
	25x (1 x 36W), 15x (2 x 36W)
	20x (1 x 58W), 10x (2 x 58W)
<b>KNX functions</b>	Light output 2x, presence output, light level,
	basic light level function, photo-cell controller, close range
Angle of coverage	300° with 180° angle of aperture
Capability of masking out individual segments	Yes
Sneak-by guard / coverage directly below the sensor	Yes
Reach	Can be adjusted in 3 directions via control dial
	(max. 2-20m tangential, temperature-stabilised)
Sensor system	4 sensors, 6 detection levels for long-distance detection
	and 5 for sneak-by protection, 1360 switching zones
Twilight setting	2-2000lx
Time setting	5 sec – 15 min, pulse mode (approx. 2 sec)
Manual override	selectable, 4 h
Light permanently OFF	selectable
IP rating	IP54
Temperature range	-20 to +50°C
Accessories included	Corner wall mount and IR remote control RC9



Detection zone for sensIQ S  
Possible mounting height: 2-5 m  
Orange: radial  
Black: tangential  
3 scalable zones



Also suitable for parallel operating mode.

**Optional accessories**

EAN Remote control Smart Remote	4007841 009151
---------------------------------	----------------

Refer to the 'Accessories' section for further information.



4x pyro system



UV-resistant plastic



Includes Corner wall mount



Includes remote control RC9



Optional Smart Remote see page 294

