

HF 3360

It detects simply everything.

Very fast and if required over 2 storeys.

High-frequency technology is the perfect alternative in areas that can pose problems for temperature-based infrared sensors. This makes the HF 3360 the ideal solution if you want to automate lighting in winding basement corridors, stairwells or multi-storey car parks. It detects the smallest of movements reliably and precisely and ensures the perfect automatic lighting control - even in stairwells over two storeys high. The HF 3360 is also ideal for all entrance areas because light is switched ON as soon as the sensor detects the door opening. Available in surface-mounted and concealed installation versions, and, naturally, compatible with the standard interfaces.



high frequency
sensor 360°



max. Ø 8 m

2000w
max.



LiveLink



IP54/IP20



2 - 4 m



2 - 1000 lux



5 sec - 15 min

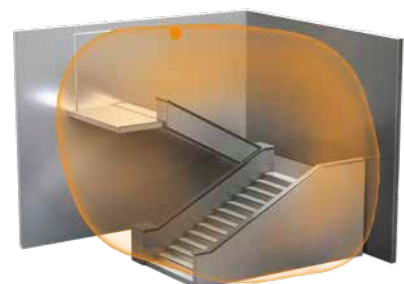
TEACH
mode



energy
saving

5 JAHRE
GARANTIE

manufacturer's
warranty



HF 3360

Surface-mountedsquare (52x95x95 mm) round (52xØ126 mm)

EAN COM1	4007841 011734	4007841 033668
EAN PF	4007841 010546	4007841 033699
EAN KNX	4007841 058210	4007841 058234
EAN DALI	4007841 011604	4007841 033736
EAN DALI-2	4007841 057312	4007841 057329
EAN LiveLink	4007841 049454	4007841 055639

Concealedsquare (64x94x94 mm) round (64xØ124 mm)

EAN COM1	4007841 033675	4007841 033682
EAN PF	4007841 033705	4007841 033712
EAN KNX	4007841 058227	4007841 058241
EAN DALI	4007841 033743	4007841 033750
EAN DALI-2	4007841 057336	4007841 057343
EAN LiveLink	4007841 055622	4007841 055646

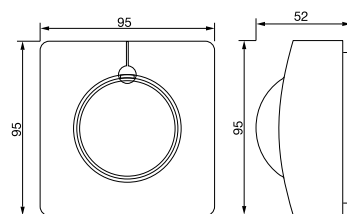
You will find information on the interfaces from page 52 onwards.

Type	Motion detector
Sensor type	High frequency
Where to use	Indoors
Installation	Wall, ceiling, corner
Mounting height	2-4 m
Recommended mounting height	2.8 m
Angle of coverage	360° with 140° angle of aperture
.....	also through glass, wood and stud walls
Reach	max. Ø 8 m tangential (50 m²), temperature-stabilised
Sensor system	High-frequency 5.8 GHz (transmitter power < 1 mW)
Twilight setting	2 - 1000 lx
Teach function for twilight setting	Yes
Manual override	Selectable, 4 h
IP rating	Concealed: IP20 / surface-mounted: IP54
Temperature range	-20 to +50°C

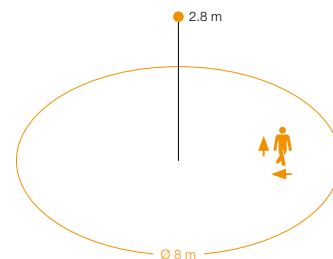
Optional accessories

EAN black trim, surface-mounted, square	4007841 056674
EAN black trim, concealed, square	4007841 056681
EAN black trim, surface-mounted, round	4007841 056698
EAN black trim, concealed, round	4007841 056704
EAN User remote control RC5	4007841 592806
EAN Service remote control RC8	4007841 559410
EAN Remote control Smart Remote	4007841 009151
EAN corner wall mount, white	4007841 035174
EAN corner wall mount, black	4007841 648015
EAN Ceiling box Ø68 mm	4007841 052812

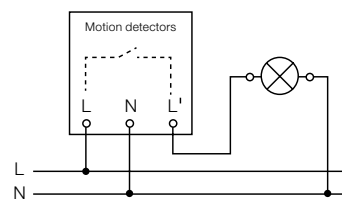
Refer to the 'Accessories' section for further information.



Surface-mounted, square
For further designs, see page 56



HF 3360 detection zone
Possible mounting height: 2 - 4 m
Orange: radial and tangential



Also suitable for parallel operating mode.
Intrinsic-light detection.

Further circuit diagrams starting on page 52

UV-resistant plastic



Large terminal compartment (surface-mounted only)



Optional corner wall mount available



Optional remote controls refer to page 298

