

IS 2360-3 ECO

The multi-talent for indoors and outdoors.

The infrared ceiling sensor that satisfies all demands and is really simple to install. Simply genius: sophisticated technology that is installed and configured in just a few steps thanks to a clever installation concept. Thanks to its three pyro sensors, the infrared surface-mounted sensor has an impressive 360° angle of coverage and a range of up to 12 m. The detection zone can be set to any requirement by fitting shrouds.



infrared sensor 360°



max. 12m

2000w

max.



IP54



2 - 4m



2 - 1000 lux



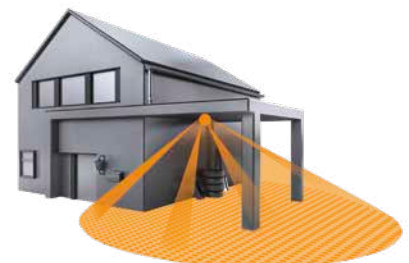
5 sec - 15 min



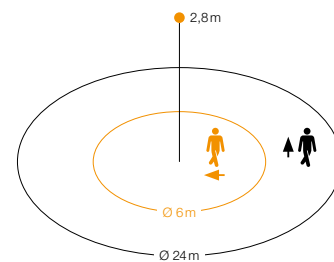
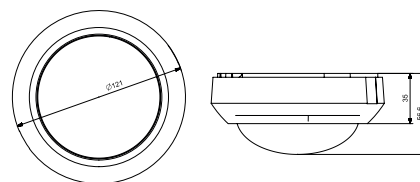
energy saving

5 JAHRE GARANTIE

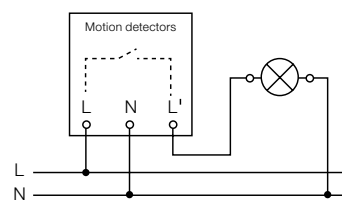
manufacturer's warranty



EAN IS 2360-3 ECO	4007841 057770
Type	Motion detector
Dimensions (HxWxD)	Ø 121 x 57 mm
Power supply	220 - 240 V, 50 / 60 Hz
Sensor type	Passive infrared
Where to use	Indoors and outdoors
Installation	Ceiling
Mounting height	2 - 4 m
Recommended mounting height	2.8 m
Output	max. 2000 W (resistive load), max. 8 fluorescent lamps / LED lamps, $C \leq 132 \mu\text{F}$ max. 500 VA ($\cos \phi = 0.5$)
Angle of coverage	360° with 90° angle of aperture
Capability of masking out individual segments	Yes
Swivelling range	$\pm 10^\circ$ precision adjustment of lens
Reach	max. Ø 24 m tangential (452 m ²), temperature-stabilised
Twilight setting	2 - 1000lx
Time setting	5 sec - 15 min
IP rating	IP54
Temperature range	-20 to +50°C
Accessories included	.shrouds



IS 2360-3 ECO detection zone
Possible mounting height: 2 - 4 m
Orange: radial
Black: tangential



Also suitable for parallel operating mode.

Further circuit diagrams starting on page 82

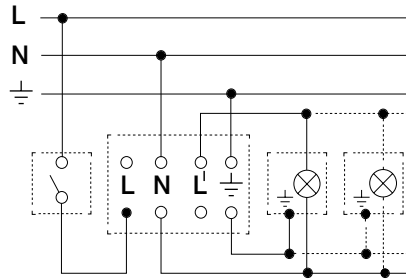
UV-resistant plastic



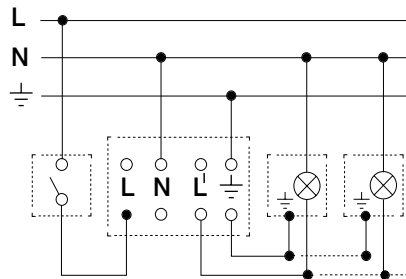
Wiring diagrams for 2000 ECO series

Connections for: IS 2180-5 / IS 2180-2 / IS 300 / IS 2160 ECO / IS 2180 ECO / IS 2360 ECO / IS 2360-3 ECO / IS 2360 DE ECO / IR 2180 concealed ECO

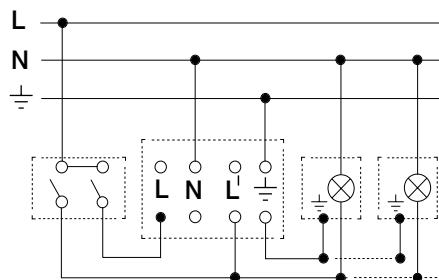
Light without neutral conductor



Light with neutral conductor



Connection using two-circuit switch for manual and automatic operation



Connection via a two-way switch for manual override and automatic operation

Setting I: automatic operation
 Setting II: manual operation
 Manual override for constant light
 Note: The system cannot be switched OFF, it is only possible to select operation via setting I or II.

