

LED
LONG LIFE



The mark of energy-conscious households.

Outdoor sensor lights with all-inclusive LED system.

In some parts of Germany, illuminated house numbers are already compulsory. Apart from this, they also mean visibly more security, convenience and aesthetic appeal. Today, there's hardly a more energy-efficient way to set off house numbers and entrance areas than with STEINEL Professional outdoor sensor-switched lights. Form and function team up to create attractive eye-catchers that complement the style of modern architecture. All STEINEL Professional models combine efficient LED lighting technology with infrared sensor systems, producing resplendent statements of a dazzling awareness for conserving energy and protecting the environment.

L 331 LED

Stylish, practical and impact-resistant.

The L 330 LED and L 331 LED sensor-switched outdoor lights bring pleasant, even lighting to your outside wall. Sleek, minimalist design makes it particularly suitable for driveways, garages or stairwells, and the round lamp cover distributes light for illumination that's full of atmosphere. Incidentally, we have given these lights the very latest control system that's even capable of synchronizing several lights. The lamps can also be connected to the network via cable. This makes this robust and solid outdoor light a pleasure to work with in the professional environment.



LED

30 years
(\varnothing 4,5h/day)

9w

753lm
83,7lm/W



3000 K
warm-white



infrared
sensor 360°



max. radius 7m



IP 44



2–1000 lux



5 sec–15 min



connectable
via cable



manual
override



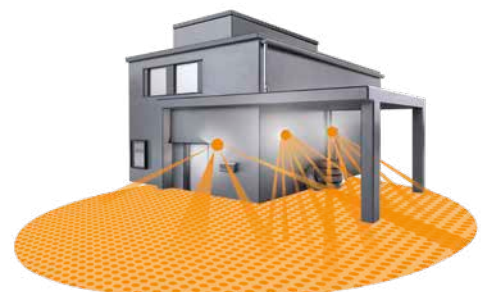
soft light
start



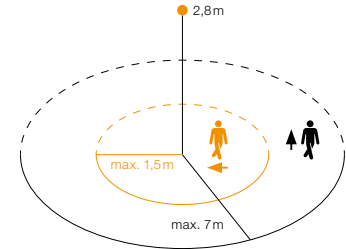
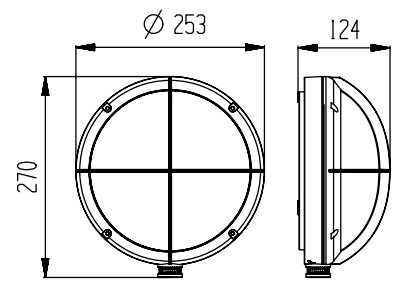
energy
saving

5 JAHRE GARANTIE

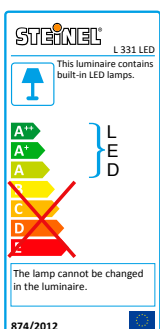
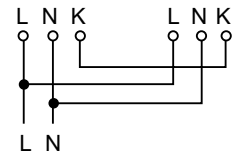
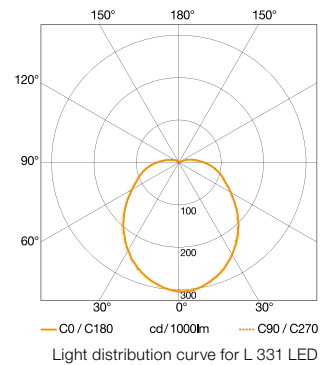
manufacturer's
warranty



EAN L 331 LED	4007841 053093
Dimensions (H x W x D)	124 x 253 x 270 mm
Power supply	220-240 V, 50 / 60 Hz
Sensor type	Passive infrared
Output	9 W
Luminous flux	753 lm
Efficiency	83.7 lm/W
Colour temperature	3000 K / SDCM 3
Colour rendering	Ra ≥ 80
LED life expectancy	50,000 h (L70B10 to LM80)
LED cooling system	Passive Thermo Control
Angle of coverage	360° with sneak-by guard
Capability of masking out individual segments	Yes
Reach	max. radius 7 m
Sensor system	2 detection levels, 512 switching zones
Twilight setting	2 - 1000 lx
Time setting	5 sec - 15 min
Basic light level	10%
Soft light start	Yes
Manual override	Selectable, 4 h
IP rating	IP44
Protection class	II
Impact resistance	IK10
Temperature range	-10 to +50°C
Material	Plastic base with PMMA shade
With lamp	STEINEL LED system
Lamps replaceable	No



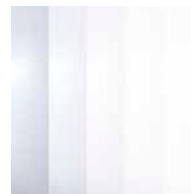
L 331 LED detection zone
Possible mounting height 1.8-3 m
Orange: radial
Black: tangential



Including STEINEL LED system



Intelligent soft light start



Interconnectable by cable (K-Line)



Sensor with 4 intelligent programs



UV-resistant plastic



Impact-resistant IK10

