

LED
LONG LIFE



The mark of energy-conscious households.

Outdoor sensor lights with all-inclusive LED system.

In some parts of Germany, illuminated house numbers are already compulsory. Apart from this, they also mean visibly more security, convenience and aesthetic appeal. Today, there's hardly a more energy-efficient way to set off house numbers and entrance areas than with STEINEL Professional outdoor sensor-switched lights. Form and function team up to create attractive eye-catchers that complement the style of modern architecture. All STEINEL Professional models combine efficient LED lighting technology with infrared sensor systems, producing resplendent statements of a dazzling awareness for conserving energy and protecting the environment.

L 666 LED

**Harmonises with modern architecture.
And with the L 665 LED house-number light.**

Just one outdoor light on a building is rarely enough. The L 666 LED is the perfect complement for the L 665 LED house number light of identical design, creating a display of lights in matching style along the fronts of modern buildings. But as a solo artist too, it delivers an impressive performance playing the eye-catcher, making it equally as suitable as a purist house-number light. A sheet of house numbers is included.



LED

30 years
(Ø 4,5h/day)

9w

595lm
66lm/W



3000 K
warm-white



infrared
sensor 360°



max. Radius 7 m



IP 44



2-1000 lux



5sec-15min



manual
override



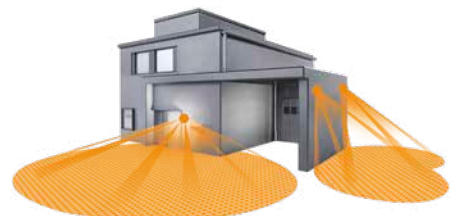
soft light
start



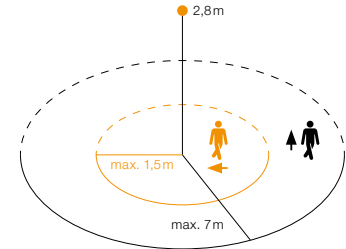
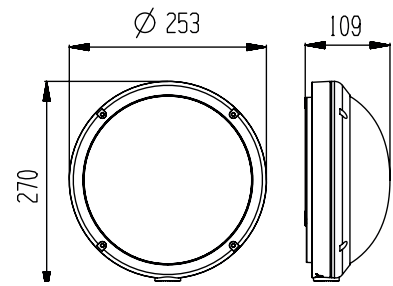
energy
saving

**5 JAHRE
GARANTIE**

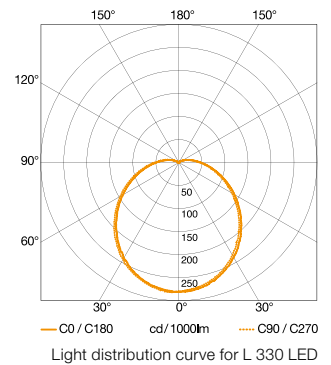
manufacturer's
warranty



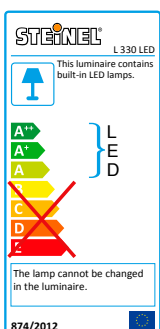
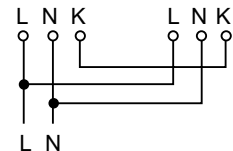
| | |
|---|---|
| EAN L 330 LED | 4007841 053079 |
| Dimensions (H x W x D) | 109 x 253 x 270 mm |
| Power supply | 220-240 V, 50 / 60 Hz |
| Sensor type | Passive infrared |
| Output | 9 W |
| Luminous flux | 753 lm |
| Efficiency | 83.7 lm/W |
| Colour temperature | 3000 K / SDCM 3 |
| Colour rendering | Ra ≥ 80 |
| LED life expectancy | 50,000 h (L70B10 to LM80) |
| LED cooling system | Passive Thermo Control |
| Angle of coverage | 360° with sneak-by guard |
| Capability of masking out individual segments | Yes |
| Reach | max. radius 7 m |
| Sensor system | 2 detection levels, 512 switching zones |
| Twilight setting | 2 - 1000 lx |
| Time setting | 5 sec - 15 min |
| Basic light level | 10% |
| Soft light start | Yes |
| Manual override | Selectable, 4 h |
| IP rating | IP44 |
| Protection class | II |
| Impact resistance | IK10 |
| Temperature range | -10 to +50°C |
| Material | Plastic base with PMMA shade |
| With lamp | STEINEL LED system |
| Lamps replaceable | No |



L330LED detection zone
Possible mounting height 1.8-3 m
Orange: radial
Black: tangential



Light distribution curve for L 330 LED



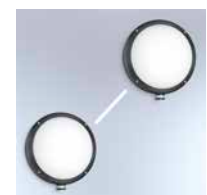
Including STEINEL LED system



Intelligent soft light start



Interconnectable by cable (K-Line)



Sensor with 4 intelligent programs



UV-resistant plastic



Impact-resistant IK10

