

LED
LONG LIFE



The mark of energy-conscious households.

Outdoor sensor lights with all-inclusive LED system.

In some parts of Germany, illuminated house numbers are already compulsory. Apart from this, they also mean visibly more security, convenience and aesthetic appeal. Today, there's hardly a more energy-efficient way to set off house numbers and entrance areas than with STEINEL Professional outdoor sensor-switched lights. Form and function team up to create attractive eye-catchers that complement the style of modern architecture. All STEINEL Professional models combine efficient LED lighting technology with infrared sensor systems, producing resplendent statements of a dazzling awareness for conserving energy and protecting the environment.

L 691 LED

**Perfectly guarded.
Perfectly equipped.**

Football balls don't always land in between the goal posts but can often hit hard for home-owners too. This is the reason for outdoor sensor-switched light L 691 LED. It gives protection in a most decorative form. The grid prevents damage to the glass shade. And cuts a fine figure as it does so too. With the same design, technology, features and range of functions as the L 690 LED outdoor sensor-switched light.

**LED
LONG LIFE**



LED

30 years
(Ø 4,5h/day)

9w

753lm
83,7lm/W



3000 K
warm-white



infrared
sensor 360°



max. radius 7m



IP 44



2-1000 lux



5 sec-15 min



connectable
via cable



manual
override



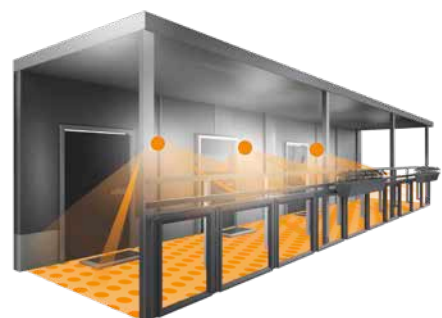
soft light
start



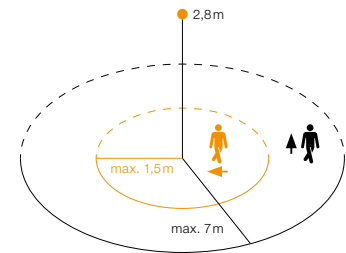
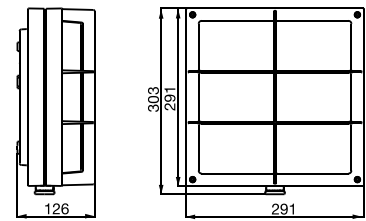
energy
saving

**5 JAHRE
GARANTIE**

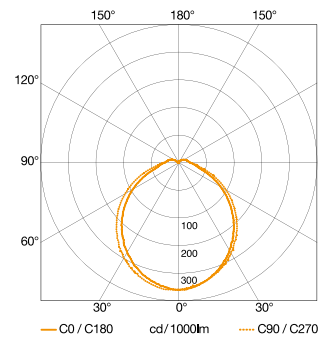
manufacturer's
warranty



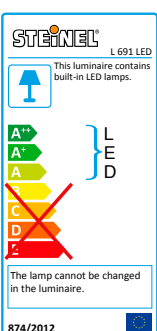
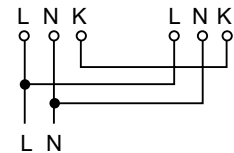
EAN L 690 LED	4007841 053031
Dimensions (HxWxD)	303 x 291 x 126 mm
Power supply	220-240, 50 / 60 Hz
Sensor type	Passive infrared
Output	9 W
Luminous flux	753 lm
Efficiency	83.7 lm/W
Colour temperature	3000 K / SDCM 3
Colour rendering	Ra ≥ 80
LED life expectancy	50,000 h (L70B10 to LM80)
LED cooling system	Passive Thermo Control
Angle of coverage	360° with sneak-by guard
Capability of masking out individual segments	Yes
Reach	max. radius 7 m
Sensor system	2 detection levels, 512 switching zones
Twilight setting	2 - 1000lx
Time setting	5 sec - 15 min
Basic light level	10%
Soft light start	Yes
Manual override	Selectable, 4 h
IP rating	IP44
Protection class	II
Impact resistance	IK07
Temperature range	-10 to +50°C
Material	Aluminium base with PMMA shade
With lamp	STEINEL LED system
Lamps replaceable	No



L 691 LED detection zone
Possible mounting height 1.8 - 3 m
Orange: radial
Black: tangential



Light distribution curve for L 691 LED



Impact-resistant IK07



Including STEINEL LED system



Intelligent soft light start



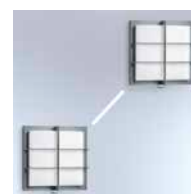
Optional basic light level of 10%



Sensor with 4 intelligent programs



Interconnectable via cable (K-Line)



High-quality aluminium

