

LED
LONG LIFE



The mark of energy-conscious households.

Outdoor sensor lights with all-inclusive LED system.

In some parts of Germany, illuminated house numbers are already compulsory. Apart from this, they also mean visibly more security, convenience and aesthetic appeal. Today, there's hardly a more energy-efficient way to set off house numbers and entrance areas than with STEINEL Professional outdoor sensor-switched lights. Form and function team up to create attractive eye-catchers that complement the style of modern architecture. All STEINEL Professional models combine efficient LED lighting technology with infrared sensor systems, producing resplendent statements of a dazzling awareness for conserving energy and protecting the environment.

L 690 LED

**Timelessly beautiful.
And extremely tough.**

The square is one of the most popular shapes anywhere in and around the home. This is why it's only logical for STEINEL to believe in this familiar design that people like. And combine it with innovative LED and sensor technology. Just like all of STEINEL's sensor-switched outdoor LED lights, the L 690 LED comes with the full range of functions too: basic brightness, soft light start as well as adjustable time and twilight threshold. Due to the high demand, we took a good look at the L 690 and the 691 LED and have made this system provide even better illumination and even better energy efficiency. These lamps can also be interconnected via cable. This makes this robust and solid outdoor light a pleasure to work with in the professional environment.

**LED
LONG LIFE**



LED

30 years
(Ø 4,5h/day)

9w

753lm
83,7lm/W



3000 K
warm-white



infrared
sensor 360°



max. radius 7m



IP 44



2–1000 lux



5 sec–15 min



connectable
via cable



manual
override



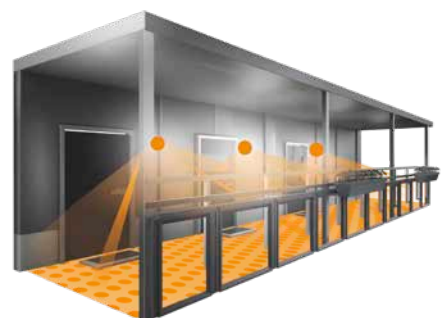
soft light
start



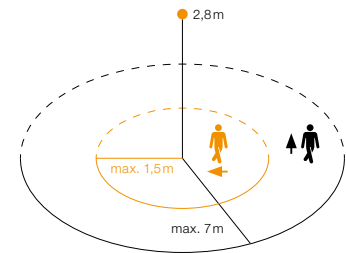
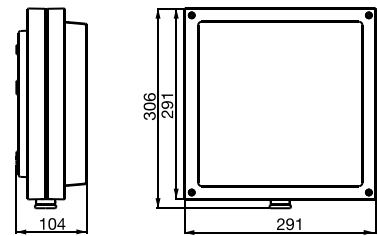
energy
saving

**5 JAHRE
GARANTIE**

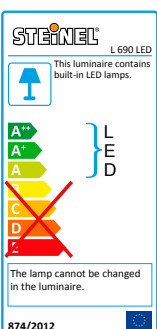
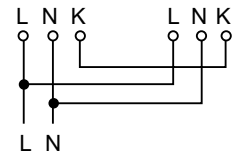
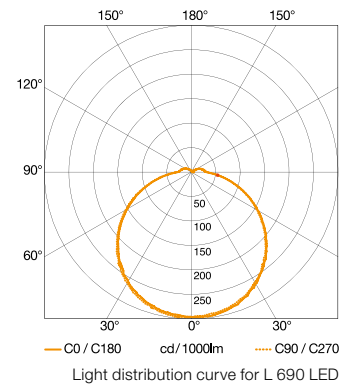
manufacturer's
warranty



EAN L 690 LED 4007841 053000
 Dimensions (H x W x D) 306 x 291 x 104 mm
 Power supply 220-240, 50 / 60 Hz
 Sensor type Passive infrared
 Output 9 W
 Luminous flux 753 lm
 Efficiency 83.7 lm/W
 Colour temperature 3000 K / SDCM 3
 Colour rendering Ra ≥ 80
 LED life expectancy 50,000 h (L70B10 to LM80)
 LED cooling system Passive Thermo Control
 Angle of coverage 360° with sneak-by guard
 Capability of masking out individual segments Yes
 Reach max. radius 7 m
 Sensor system 2 detection levels, 512 switching zones
 Twilight setting 2-1000lx
 Time setting 5 sec- 15 min
 Basic light level 10%
 Soft light start Yes
 Manual override Selectable, 4 h
 IP rating IP44
 Protection class II
 Impact resistance IK07
 Temperature range -10 to +50°C
 Material Aluminium base with PMMA shade
 With lamp STEINEL LED system
 Lamp replaceable No
 Sheet of house numbers included



L 690 LED detection zone
 Possible mounting height 1.8-3 m
 Orange: radial
 Black: tangential



Including STEINEL LED system



Intelligent soft light start



Optional basic light level of 10%



Impact-resistant IK07



Sensor with 4 intelligent programs



Interconnectable via cable (K-Line)



High-quality aluminium



Includes sheet of self-adhesive house numbers

