

# IS 2360 DE ECO

## STEINEL inside.

### Intelligent technology for flush installation.

The perfect infrared sensor for installing in projecting roofs and suspended ceilings.

The IS 2360 DE ECO has a reach of up to 4 m and an impressive 360° angle of coverage.

The detection zone can be adjusted where necessary by using shrouds.



infrared  
sensor 360°



max. 4 m



IP54

1000w

max.



2,2 - 4 m



2 - 2000 lux



8sec - 35min



energy  
saving

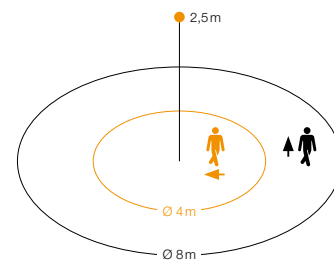
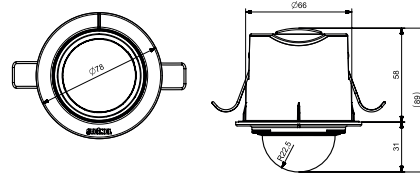
5 JAHRE  
GARANTIE

manufacturer's  
warranty

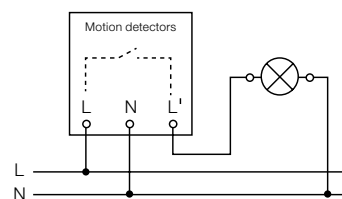


360°, max. 4 m

EAN IS 2360 DE ECO	4007841 034733
Type	Motion detector
Dimensions (ØxH)	Ø 78 x 89 mm
Power supply	230-240 V, 50 / 60 Hz
Sensor type	Passive infrared
Where to use	Indoors and outdoors
Mounting	In-ceiling installation, Ø 68 mm
Mounting height	2.2-4 m
Recommended mounting height	2.5 m
Output	max. 1000 W (resistive load), max. 6 fluorescent lamps / LED lamps, $C \leq 132 \mu\text{F}$ max. 1000 VA ( $\cos \phi = 0.5$ )
Angle of coverage	360° with 180° angle of aperture
Capability of masking out individual segments	Yes
Swivelling range	$\pm 10^\circ$ precision adjustment of lens
Reach	max. Ø 8 m tangential (50 m <sup>2</sup> ), temperature-stabilised
Twilight setting	2-2000 lx
Time setting	8 sec - 35 min
IP rating	IP54
Temperature range	- 20 to + 40°C
Accessories included	.shrouds



IS 2360 DE ECO detection zone  
Possible mounting height: 2.2-4 m  
Orange: radial  
Black: tangential



Also suitable for parallel operating mode.

Further circuit diagrams starting on page 82

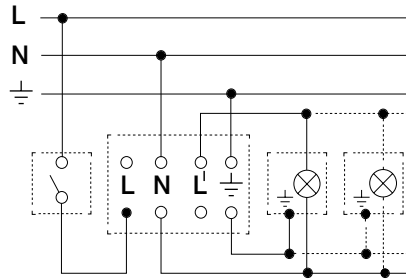
UV-resistant plastic



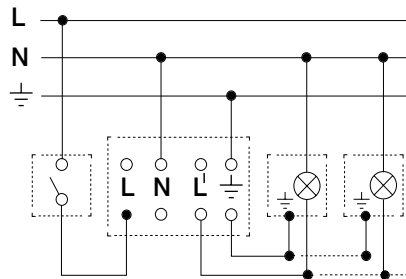
# Wiring diagrams for 2000 ECO series

Connections for: IS 2180-5 / IS 2180-2 / IS 300 / IS 2160 ECO / IS 2180 ECO / IS 2360 ECO / IS 2360-3 ECO / IS 2360 DE ECO / IR 2180 concealed ECO

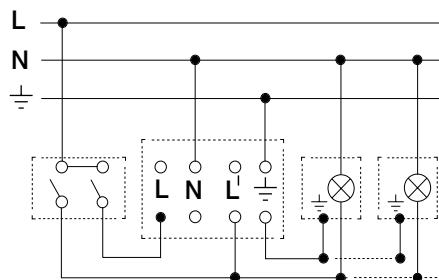
Light without neutral conductor



Light with neutral conductor



Connection using two-circuit switch for manual and automatic operation



Connection via a two-way switch for manual override and automatic operation

Setting I: automatic operation  
 Setting II: manual operation  
 Manual override for constant light  
 Note: The system cannot be switched OFF, it is only possible to select operation via setting I or II.

