

# Light Sensor Dual

## The duality of light measurement.

No matter whether directed or diffuse measurements are needed - both work with the Light Sensor Dual. The challenge must not be underestimated. To obtain usable information on the lighting situation in a room, it is not sufficient to simply determine the general brightness. It is important to use a combination of measuring the light level at the desk, for example, and determining diffuse room brightness. This way, errors can be ruled out for better lighting control. And the STEINEL Light Sensor Dual is simply perfect for this.



Twilight switch  
+ eco-mode



LiveLink



max. 4m



IP54 / IP20



2- 1000 lux

**5** JAHRE  
GARANTIE

manufacturer's  
warranty



Light Sensor Dual

**Surface-mounted** .....square (65x95x95 mm) round (65xØ126 mm)

EAN KNX .....4007841 058319 ..... 4007841 058333

EAN DALI-2 .....4007841 057411 ..... 4007841 057428

EAN LiveLink .....4007841 009762 .....

**Concealed** .....square (78x94x94 mm) round (78xØ124 mm)

EAN KNX .....4007841 058326 ..... 4007841 058340

EAN DALI-2 .....4007841 057435 ..... 4007841 057442

**You will find information on the interfaces from page 52 onwards.**

Type ..... photo-cell controller

Dimensions (H x W x D) ..... 42 x 95 x 95 mm

Where to use ..... Indoors and outdoors

Installation ..... Ceiling

Recommended mounting height ..... 4 m

Angle of coverage ..... directed and diffuse

Twilight setting ..... 2 - 1000lx

IP rating ..... Concealed: IP20 / surface-mounted: IP54

Temperature range ..... -20 to +50°C

**Optional accessories**

EAN black trim, surface-mounted, square. ....4007841 056711

EAN black trim, concealed, square .....4007841 056728

EAN black trim, surface-mounted, round .....4007841 056735

EAN black trim, concealed, round .....4007841 056742

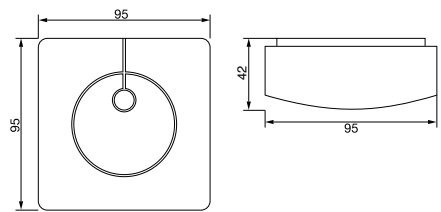
EAN Service remote control RC6 KNX .....4007841 593018

EAN IR user remote control RC7 KNX .....4007841 592912

EAN Remote control Smart Remote ..... 4007841 009151

EAN Ceiling box Ø68 mm .....4007841 052812

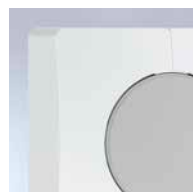
Refer to the 'Accessories' section for further information.



Surface-mounted, square  
For further designs, see page 56



UV-resistant plastic



Large terminal compartment (surface-mounted only)



Optional remote controls refer to page 298

