

Lamps

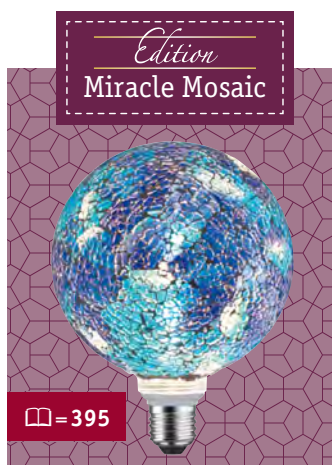
- 360 LED Standard 12V
- 363 LED Standard Filament 230V
- 370 LED Standard 230V
- 378 LED Decorative
- 398 LED Smart Home
- 400 Tube fluorescent
- 402 Halogen 12V
- 404 Halogen 230V
- 405 Conventional Lamps



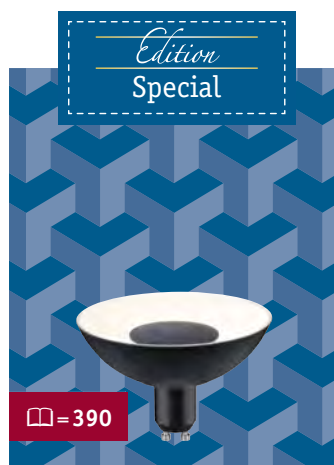
EN Gold glass lamps with engraved light cylinder
 ES: Lámparas de vidrio dorado con cilindro grabado
 IT: Lampade in vetro dorato con cilindro luminoso inciso
 ▶ 1800 K extra warm white



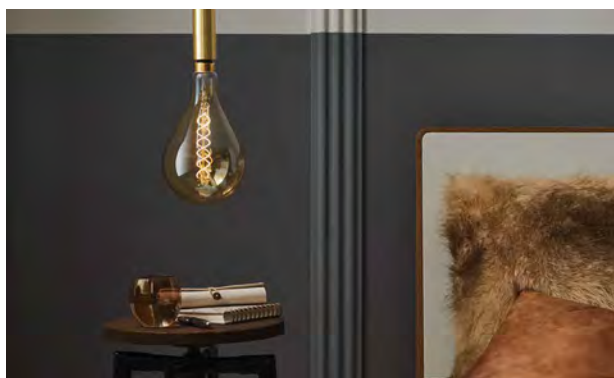
EN Luxurious gold glass lamps
 ES: Elegantes lámparas de vidrio dorado
 IT: Raffinate lampade con vetro dorato
 ▶ 2500-2700 K warm white



EN All-glass lamps with mosaic
 ES: Ampollas de vidrio con mosaico de cristal
 IT: Lampade completamente in vetro con mosaici in vetro
 ▶ 2700 K warm white
 ▶ Dimmable



EN: classic reflectors and filament lamps in many colours
 Design classics Deco Pipe and Deco Tube. ES: Decorativos reflectores GU10 y lámparas de filamentos en numerosos colores. Los clásicos del diseño Deco Pipe y Deco Tube. IT: Riflettori decorativi GU10 e lampade a filamento in svariati colori. E eme ti dal design classico Deco Pipe e Deco Tube.



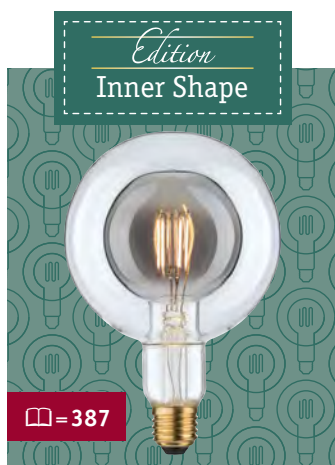
1879 Edition





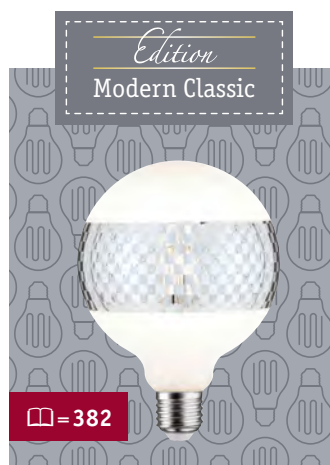
Edison
Fantastic Colors

☞ = 396



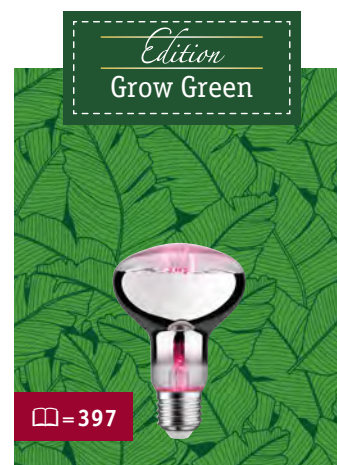
Edison
Inner Shape

☞ = 387



Edison
Modern Classic

☞ = 382



Edison
Grow Green

☞ = 397

EN: Preci l effect glass with gorgeous rainbow effects
ES: Cristal con efectos espejales para un efecto de arco iris mágico
IT: Vetro d l'effetto sp ciale con effetto ar obaleno

- ▶ 2700 K warm white
- ▶ Dimmable

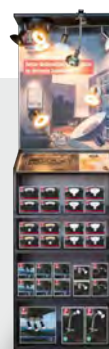
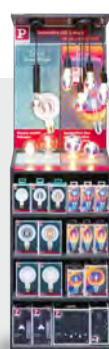
EN: Decorative glass encased in clear glass
ES: Cristal decorado envuelto en cristal laro
IT: Un vetro trasparente avvolge il vetro decorativo

- ▶ 2700 K warm white
- ▶ Dimmable

EN: Crown and ring mirror lamps
ES: Lámparas con espejado de cúpula y anular
IT: Lampade con testina e anello a specchio

- ▶ 2500–2700 K warme white

EN: p c al olour spectrum promotes the gr wth of indoor plants
ES: Espectro de colores especial para el crecimiento de plantas d interior
IT: Speciale spettro cromatico per la crescita delle piante da interno



🔗 Matt Mate Opaco



| W | ⚡ | ∅ mm | ↑ mm | ⬠ | lm | ♀ | K | 🕒 | ON/OFF | 📦 | EAN | 📄 | |
|-----|-----|------|------|----------------|-----|---|-------|--------|--------|----|----------------|---|--------|
| 3 | E14 | 45 | 78 | A ⁺ | 250 | | 2.700 | 15.000 | 50000 | 10 | 4000870 286296 | ✓ | 286.29 |
| 5 | E14 | 45 | 78 | A ⁺ | 470 | | 2.700 | 15.000 | 50000 | 10 | 4000870 286319 | ✓ | 286.31 |
| 6,5 | E14 | 45 | 80 | A ⁺ | 806 | | 2.700 | 15.000 | 50000 | 10 | 4000870 286524 | ✓ | 286.52 |



| W | ⚡ | ∅ mm | ↑ mm | ⬠ | lm | ♀ | K | 🕒 | ON/OFF | 📦 | EAN | 📄 | |
|-------|-----|------|------|----------------|-----|---|-------|--------|--------|----|----------------|---|------------|
| 2x3 | E14 | 45 | 78 | A ⁺ | 250 | | 2.700 | 15.000 | 50000 | 10 | 4000870 286388 | ✓ | 286.38 |
| 2x4,5 | E14 | 45 | 78 | A ⁺ | 470 | | 2.700 | 15.000 | 50000 | 10 | 4000870 287897 | ✓ | new 287.89 |



🔗 dimmable

| W | ⚡ | ∅ mm | ↑ mm | ⬠ | lm | ♀ | K | 🕒 | ON/OFF | 📦 | EAN | 📄 | |
|---|-----|------|------|----------------|-----|---|-------|--------|--------|----|----------------|---|--------|
| 5 | E14 | 45 | 78 | A ⁺ | 470 | | 2.700 | 15.000 | 50000 | 10 | 4000870 286326 | ✓ | 286.32 |



🔗 dimmable

🔗 Matt/White Mate/Blanco Opaco/Bianco

| W | ⚡ | ∅ mm | ↑ mm | ⬠ | lm | ♀ | K | 🕒 | ON/OFF | 📦 | EAN | 📄 | |
|---|-----|------|------|----------------|-----|---|-------|--------|--------|---|----------------|---|------------|
| 5 | E14 | 45 | 78 | A ⁺ | 470 | | 4.000 | 15.000 | 50000 | 1 | 4000870 287286 | ✓ | new 287.28 |



🔗 dimmable

🔗 Matt Mate Opaco

| W | ⚡ | ∅ mm | ↑ mm | ⬠ | lm | ♀ | K | 🕒 | ON/OFF | 📦 | EAN | 📄 | |
|---|-----|------|------|----------------|-----|---|-------|--------|--------|---|----------------|---|------------|
| 5 | E14 | 45 | 78 | A ⁺ | 470 | | 6.500 | 15.000 | 50000 | 1 | 4000870 287613 | ✓ | new 287.61 |



🔗 Matt Mate Opaco

| W | ⚡ | ∅ mm | ↑ mm | ⬠ | lm | ♀ | K | 🕒 | ON/OFF | 📦 | EAN | 📄 | |
|-----|-----|------|------|----------------|-----|---|-------|--------|--------|----|----------------|---|--------|
| 5 | E27 | 45 | 72 | A ⁺ | 470 | | 2.700 | 15.000 | 50000 | 10 | 4000870 286340 | ✓ | 286.34 |
| 6,5 | E27 | 45 | 85 | A ⁺ | 806 | | 2.700 | 15.000 | 50000 | 10 | 4000870 286562 | ✓ | 286.56 |



| W | ⚡ | ∅ mm | ↑ mm | ⬠ | lm | ♀ | K | 🕒 | ON/OFF | 📦 | EAN | 📄 | |
|-----|-----|------|------|----------------|-----|---|-------|--------|--------|----|----------------|---|--------|
| 2x5 | E27 | 45 | 72 | A ⁺ | 470 | | 2.700 | 15.000 | 50000 | 10 | 4000870 286395 | ✓ | 286.39 |



🔗 dimmable

| W | ⚡ | ∅ mm | ↑ mm | ⬠ | lm | ♀ | K | 🕒 | ON/OFF | 📦 | EAN | 📄 | |
|-----|-----|------|------|----------------|-----|---|-------|--------|--------|----|----------------|---|--------|
| 5 | E27 | 45 | 72 | A ⁺ | 470 | | 2.700 | 15.000 | 50000 | 10 | 4000870 286357 | ✓ | 286.35 |
| 6,5 | E27 | 45 | 78 | A | 800 | | 2.700 | 20.000 | 50000 | 10 | 4000870 286579 | ✓ | 286.57 |



🔗 dimmable

🔗 Clear Transparente Trasparente

| W | ⚡ | ∅ mm | ↑ mm | ⬠ | lm | ♀ | K | 🕒 | ON/OFF | 📦 | EAN | 📄 | |
|-----|-----|------|------|----------------|-----|---|-------|--------|--------|----|----------------|---|------------|
| 2,8 | E14 | 25 | 82 | A ⁺ | 250 | | 2.700 | 15.000 | 50000 | 10 | 4000870 286944 | ✓ | new 286.94 |
| 4,8 | E14 | 25 | 82 | A ⁺ | 470 | | 2.700 | 15.000 | 50000 | 10 | 4000870 286937 | ✓ | new 286.93 |

