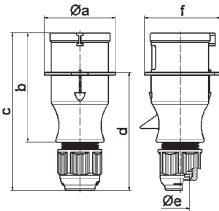
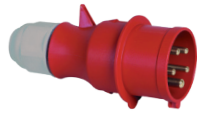


TLS Plug with Multi-Grip

- Screw terminals
- Cable gland Multi-Grip system
- One-piece housing
- Protection degree IP44



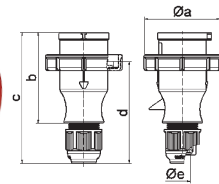
A _{request}	16	16	16	32	32	32	A	P	V	Art. No.	Qty
P _{dist}	3	4	5	3	4	5					
a Ø	54,0	60,0	66,0	71,0	71,0	80,0	16	3	230	21001-TLS	10
b	94,5	98,0	101,0	115,0	115,0	119,0	16	4	400	21005-TLS	10
c	138,0	142,0	145,0	170,0	170,0	174,0					
d	101,5	105,5	108,5	124,0	124,0	128,0	16	5	400	203-TLS	10
e Ø	18,0	18,0	18,0	23,0	23,0	23,0					
f	56,6	64,0	71,0	76,0	76,0	85,0					
							32	3	230	21013-TLS	10
							32	4	400	21017-TLS	10
							32	5	400	204-TLS	10

Type: 204-TLS

2 MB 129

TLS Plug with Multi-Grip

- Screw terminals
- Nickel plated contacts
- Cable gland Multi-Grip system
- One-piece housing
- Protection degree IP67



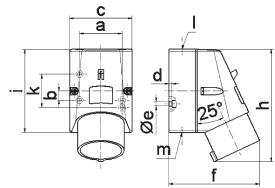
A _{request}	16	16	16	32	32	32	A	P	V	Art. No.	Qty
P _{dist}	3	4	5	3	4	5					
a Ø	70,0	78,0	86,0	94,0	94,0	101,0	16	3	230	210576	10
b	94,5	98,0	101,0	115,0	115,0	119,0	16	4	400	210583	10
c	138,0	142,0	145,0	170,0	170,0	174,0					
d	105,5	109,5	112,5	128,0	128,0	132,0	16	5	400	210589	10
e Ø	18,0	18,0	18,0	23,0	23,0	23,0					
							32	3	230	210594	10
							32	4	400	210601	10
							32	5	400	210607	10

Type: 210589

2 MB 130

Surface Mounting Appliance Inlet

- Screw terminals
- Protection degree IP44



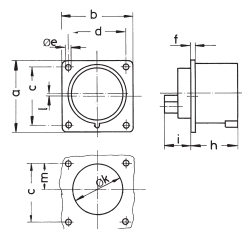
A _{request}	16	16	16	32	32	32	A	P	V	Art. No.	Qty
P _{dist}	3	4	5	3	4	5					
a	51,0	59,0	59,0	65,0	65,0	65,0	16	3	230	245	10
b	-	11,0	11,0	11,0	11,0	11,0					
c	64,0	75,0	75,0	83,0	83,0	83,0	16	4	400	249	10
d	4,0	4,0	4,0	6,5	6,5	6,5					
e Ø	4,1	5,1	5,1	5,5	5,5	5,5	16	5	400	2415	10
f	93,0	106,0	110,0	128,0	128,0	130,0					
h	122,0	135,0	135,0	165,0	165,0	166,0	32	3	230	24168	10
i	87,0	100,0	100,0	126,0	126,0	126,0	32	3	230	24168	10
k	40,0	-	-	-	-	-	32	4	400	24172	10
l	M20	M20	M20	M25	M25	M25					
m	for M20	for M20	for M20	2xM25	2xM25	2xM25	32	5	400	24144	10

Type: 2415

5 MB 47/45

Appliance Inlet with Flange

- Screw terminals
- Flange 75 x 75 mm
- Nickel plated contacts
- Protection degree IP44



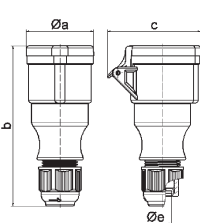
A _{request}	16	16	16	32	32	32	A	P	V	Art. No.	Qty
P _{dist}	3	4	5	3	4	5					
a	75,0	75,0	75,0	75,0	75,0	75,0	16	3	230	2817	10
b	75,0	75,0	75,0	75,0	75,0	75,0					
c	60,0	60,0	60,0	60,0	60,0	60,0	16	4	400	2831	10
d	60,0	60,0	60,0	60,0	60,0	60,0					
e Ø	5,5	5,5	5,5	5,5	5,5	5,5	16	5	400	2814	10
f	7,0	7,0	7,0	7,0	7,0	7,0					
h	43,0	43,0	43,0	53,0	53,0	53,0	32	3	230	2827	10
i	24,0	24,0	24,0	30,0	30,0	30,0					
k Ø	42,0	48,0	61,0	57,0	57,0	57,0	32	4	400	2830	10
l	-	-	5,0	2,0	2,0	-					
m	30,0	30,0	25,0	28,0	28,0	30,0	32	5	400	2815	10

Type: 2815

5 MB 39

TLS Connector with Multi-Grip

- Screw terminals
- Cable gland Multi-Grip system
- One-piece housing
- Protection degree IP44



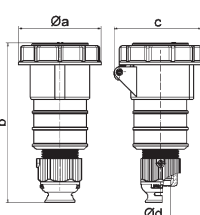
A _{request}	16	16	16	32	32	32	A	P	V	Art. No.	Qty
P _{dist}	3	4	5	3	4	5					
a Ø	51,0	58,0	65,0	67,0	67,0	73,0	16	3	230	31001-TLS	10
b	145,0	148,0	156,0	185,0	185,0	185,0	16	4	400	31005-TLS	10
c	74,0	84,0	90,0	94,0	94,0	102,0					
e Ø	18,0	18,0	18,0	23,0	23,0	23,0	16	5	400	303-TLS	10
							32	3	230	31013-TLS	10
							32	4	400	31017-TLS	10
							32	5	400	304-TLS	10

Type: 304-TLS

3 MB 82

TLS Connector with Multi-Grip

- Screw terminals
- Nickel plated contacts
- Cable gland Multi-Grip system
- One-piece housing
- Protection degree IP67



A _{request}	16	16	16	32	32	32	A	P	V	Art. No.	Qty
P _{dist}	3	4	5	3	4	5					
a Ø	70,5	78,0	86,5	94,0	94,0	101,5	16	3	230	310333	10
b	154,0	155,0	160,0	190,0	190,0	190,0	16	4	400	310340	10
c	77,0	83,0	93,0	99,0	107,0	107,0					
e Ø	18,0	18,0	18,0	23,0	23,0	23,0	16	5	400	310346	10
							32	3	230	310351	10
							32	4	400	310358	10
							32	5	400	310364	10

Type: 310346

3 MB 81