

SURFACE MOUNTING APPLIANCE INLETS

- IEC 60309-1/2, EN 60309, VDE 0623
- Protection degree IP44

Surface Mounting Appliance Inlet

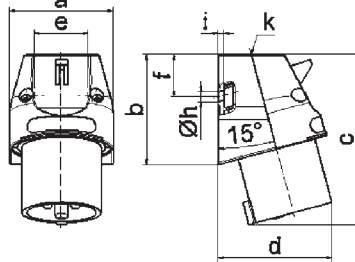
- Screw terminals
- Cable entry 1x at top (open), 1x at bottom (closed)
- Protection degree IP44

3		4		5		110V 50-60 Hz			230V 50-60 Hz			400V 50-60 Hz			500V 50-60 Hz			100-300Hz > 50V			301-500Hz > 50V			Qty	
2P+E Ampere	3P+E Poles	3P+N+E Poles	3pol 4h	4pol 4h	5pol 4h	3pol 6h	4pol 9h	5pol 9h	3pol 6h	4pol 9h	5pol 9h	3pol 9h	4pol 6h	5pol 6h	3pol 7h	4pol 7h	5pol 7h	3pol 10h	4pol 10h	5pol 10h	3pol 2h	4pol 2h	5pol 2h	each	
16	3					2448			240															10	115

Accessories: Closure cap, see page 102/3



Fig.: Type 240



5 MB 43

Ampere Poles	16	3																							
a	56.5																								
b	60.0																								
c	93.0																								
d	73.0																								
e	29.5																								
f	23.5																								
h ø	5.5																								
i	3.0																								
k	M20																								
Cond. mm² min	1																								
Cond. mm² max	2.5																								

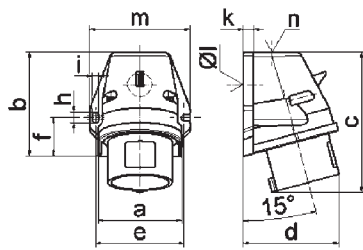
Surface Mounting Appliance Inlet Quick-Connect

- Screwless terminals
- Cable entry 1x at top (open), 1x at bottom (closed)
- Protection degree IP44

3		4		5		110V 50-60 Hz			230V 50-60 Hz			400V 50-60 Hz			500V 50-60 Hz			100-300Hz > 50V			301-500Hz > 50V			Qty	
2P+E Ampere	3P+E Poles	3P+N+E Poles	3pol 4h	4pol 4h	5pol 4h	3pol 6h	4pol 9h	5pol 9h	3pol 6h	4pol 9h	5pol 9h	3pol 9h	4pol 6h	5pol 6h	3pol 7h	4pol 7h	5pol 7h	3pol 10h	4pol 10h	5pol 10h	3pol 2h	4pol 2h	5pol 2h	each	
16	3		24422			24423																		10	170
16	4		24398			24393			24392			24539												10	180
16	5		24399			24400			242001															10	200
32	3		24401			24402																		10	240
32	4		24403			24404			24405			24540												10	260
32	5		24406			24407			242002															10	285



Fig.: Type 242001



5 MB 44

Ampere Poles	16	16	16	32	32	32
a	59.5	72.4	72.4	79.1	79.1	79.1
b	90.0	90.0	90.0	92.0	92.0	92.0
c	120.0	120.0	122.0	134.0	134.0	134.0
d	72.0	84.0	84.0	89.0	89.0	89.0
e	62.0	77.0	77.0	84.0	84.0	84.0
f	33.5	33.5	33.5	30.0	30.0	30.0
h	9.0	9.0	9.0	9.0	9.0	9.0
i	5.5	5.5	5.5	5.5	5.5	5.5
k	8.0	9.0	9.0	9.0	9.0	9.0
l ø	21.0	21.0	21.0	21.0	21.0	21.0
m	72.0	87.0	87.0	94.0	94.0	94.0
n	M20	M25	M25	M25	M25	M25
Cond. mm² min	1	1	1	2.5	2.5	2.5
Cond. mm² max	2.5	2.5	2.5	6	6	6

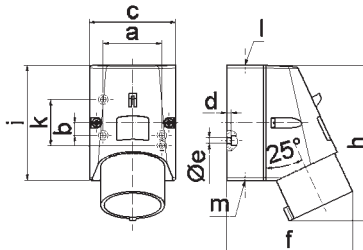
Surface Mounting Appliance Inlet

- Screw terminals
- Cable entry 1x at top (open), 1x at bottom and 1x at rear (closed)
- Protection degree IP44

3		4		5		110V 50-60 Hz			230V 50-60 Hz			400V 50-60 Hz			500V 50-60 Hz			100-300Hz > 50V			301-500Hz > 50V			Qty		
2P+E Ampere	3P+E Poles	3P+N+E Poles	3pol 4h	4pol 4h	5pol 4h	3pol 6h	4pol 9h	5pol 9h	3pol 6h	4pol 9h	5pol 9h	3pol 9h	4pol 6h	5pol 6h	3pol 7h	4pol 7h	5pol 7h	3pol 10h	4pol 10h	5pol 10h	3pol 2h	4pol 2h	5pol 2h	each		
16	3					245																		10	170	
16	4								249																10	225
16	5								2415																10	255



Fig.: Type 2415



5 MB 47

Ampere Poles	16	16	16
a	51.0	59.0	59.0
b	-	11.0	11.0
c	64.0	75.0	75.0
d	4.0	4.0	4.0
e ø	4.1	5.1	5.1
f	93.0	106.0	110.0
h	122.0	135.0	135.0
i	87.0	100.0	100.0
k	40.0	-	-
l	M20	M20	M20
m	for M20	for M20	for M20
Cond. mm² min	1	1	1
Cond. mm² max	2.5	2.5	2.5