

## FLUSH MOUNTING APPLIANCE INLETS OPTIMA Series



FLANGE 75x75

Poles	Volt	Hz.	h.	16A	
2P+E	100-130	50/60	4	243.1690	10/50
2P+E	200-250	50/60	6	243.1693	10/50
3P+E	380-415	50/60	6	243.1696	10/50
3P+N+E	346-415	50/60	6	243.1697	10/50

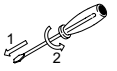
Poles	Volt	Hz.	h.	32A	
2P+E	100-130	50/60	4	243.3290	10/50
2P+E	200-250	50/60	6	243.3293	10/50
3P+E	380-415	50/60	6	243.3296	10/50
3P+N+E	346-415	50/60	6	243.3297	10/40



FLANGE 100x110

Poles	Volt	Hz.	h.	63A	
2P+E	200-250	50/60	6	243.6393	10
3P+E	380-415	50/60	6	243.6396	10
3P+N+E	346-415	50/60	6	243.6397	10

## FLUSH MOUNTING APPLIANCE INLETS OPTIMA-REVERSE Series



WITH PHASE INVERTER  
FLANGE 75x75

Poles	Volt	Hz.	h.	16A	
3P+E	380-415	50/60	6	243.1696RV	10/50
3P+N+E	346-415	50/60	6	243.1697RV	10/40

Poles	Volt	Hz.	h.	32A	
3P+E	380-415	50/60	6	243.3296RV	10/50
3P+N+E	346-415	50/60	6	243.3297RV	10/40

## FLUSH MOUNTING APPLIANCE INLETS 90° ANGLED

EUREKA Series



FLANGE 70x87

Poles	Volt	Hz.	h.	16A	
2P+E	100-130	50/60	4	242.1690	10/100
2P+E	200-250	50/60	6	242.1693	10/100
3P+E	380-415	50/60	6	242.1696	10/100
3P+N+E	346-415	50/60	6	242.1697	10/100

Poles	Volt	Hz.	h.	32A	
2P+E	100-130	50/60	4	242.3290	10/100
2P+E	200-250	50/60	6	242.3293	10/100
3P+E	380-415	50/60	6	242.3296	10/100
3P+N+E	346-415	50/60	6	242.3297	10/100

## SPECIAL APPLICATIONS



OPTIMA Series plug and sockets are also available in black colour, just add ".K" at the end of the part number P.g. 213.1633.K.