

■ SURFACE MOUNTING APPLIANCE INLETS ANGLED BOX

OPTIMA Series



Poles	Volt	Hz.	h.	16A	
2P+E	100-130	50/60	4	240.1690	10
2P+E	200-250	50/60	6	240.1693	10
3P+E	380-415	50/60	6	240.1696	10
3P+N+E	346-415	50/60	6	240.1697	10

Poles	Volt	Hz.	h.	32A	
2P+E	100-130	50/60	4	240.3290	4
2P+E	200-250	50/60	6	240.3293	4
3P+E	380-415	50/60	6	240.3296	4
3P+N+E	346-415	50/60	6	240.3297	4

■ SURFACE MOUNTING APPLIANCE INLETS ANGLED BOX

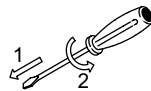
OPTIMA-TOP Series



Poles	Volt	Hz.	h.	63A	
2P+E	200-250	50/60	6	240.6393T	4
3P+E	380-415	50/60	6	240.6396T	4
3P+N+E	346-415	50/60	6	240.6397T	4

■ SURFACE MOUNTING APPLIANCE INLETS ANGLED BOX

OPTIMA-REVERSE Series



WITH PHASE INVERTER

Poles	Volt	Hz.	h.	16A	
3P+E	380-415	50/60	6	240.1696RV	10
3P+N+E	346-415	50/60	6	240.1697RV	10

Poles	Volt	Hz.	h.	32A	
3P+E	380-415	50/60	6	240.3296RV	10
3P+N+E	346-415	50/60	6	240.3297RV	10



External fixing points.



TOP version: threaded break-through knockout cable entries.



TOP version: reversible base and removable socket for easy wiring and cable entry flexibility.