









PLUGS



OPTIMA Series





Poles	Volt	Hz.	h.	16A 		16A 	
2P+E	100-130	50/60	4	218.1630	10/50	218.1630P	10/50
2P+E	200-250	50/60	6	218.1633	10/50	218.1633P	10/50
3P+E	380-415	50/60	6	218.1636	10/50	218.1636P	10/50
3P+N+E	346-415	50/60	6	218.1637	10/50	218.1637P	10/50

Poles	Volt	Hz.	h.	32A 		32A 	
2P+E	100-130	50/60	4	218.3230	10/40	218.3230F	10/40
2P+E	200-250	50/60	6	218.3233	10/40	218.3233F	10/40
3P+E	380-415	50/60	6	218.3236	10/40	218.3236F	10/40
3P+N+E	346-415	50/60	6	218.3237	10/40	218.3237F	10/40

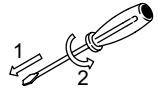


Poles	Volt	Hz.	h.	63A 	
2P+E	200-250	50/60	6	218.6333	6/24
3P+E	380-415	50/60	6	218.6336	6/24
3P+N+E	346-415	50/60	6	218.6337	6/24



Poles	Volt	Hz.	h.	125A 	
3P+E	380-415	50/60	6	218.12536	1/8
3P+N+E	346-415	50/60	6	218.12537	1/8



PLUGS

OPTIMA-REVERSE Series



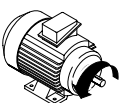
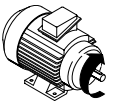
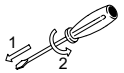
WITH PHASE INVERTER

Poles	Volt	Hz.	h.	16A 	
3P+E	380-415	50/60	6	218.1636RV	10/50
3P+N+E	346-415	50/60	6	218.1637RV	10/50

Poles	Volt	Hz.	h.	32A 	
3P+E	380-415	50/60	6	218.3236RV	10/40
3P+N+E	346-415	50/60	6	218.3237RV	10/40

PHASE INVERTER

Mobile plugs and inlets which rapidly invert two phases in order to return to the correct direction of rotation of three-phase motors.



The phases are inverted by simply pushing and turning the phase pin support with a screwdriver.