

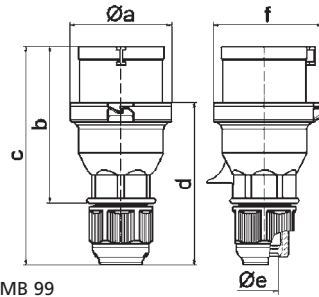
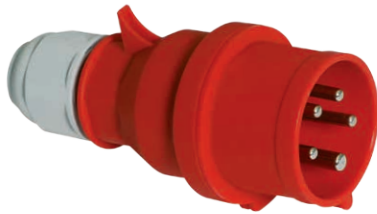
# PLUGS

- IEC 60309-1/2, EN 60309, VDE 0623
- Protection degree IP44

## Plug Quick-Connect with Multi-Grip

- Screwless terminals
- Screwless enclosure connection, self locking
- Special gland, simultaneous cable gland and seal
- Protection degree IP44

Ampere	Poles	110V 50-60 Hz		230V 50-60 Hz		400V 50-60 Hz		500V 50-60 Hz		100-300Hz > 50V		301-500Hz > 50V		Qty	each
		3pol 4h	4pol 4h	3pol 6h	4pol 9h	5pol 9h	3pol 9h	4pol 6h	5pol 6h	3pol 7h	4pol 7h	5pol 7h	3pol 10h		
16	3	2125		2126										10	100
16	4			2129		2130								10	135
16	5			2135		2136								10	140
32	3	2137		2138										10	250
32	4			2141		2142								10	220
32	5			2147		2148								10	295



2 MB 99

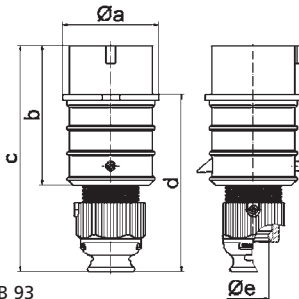
Ampere	16	16	16	32	32	32
Poles	3	4	5	3	4	5
a	53.0	60.0	66.0	74.5	74.5	74.5
b	93.5	100.5	103.0	121.0	121.0	121.5
c	134.0	141.0	142.0	174.0	174.0	174.5
d	97.5	104.5	105.5	128.0	128.0	128.5
f	18.0	18.0	18.0	23.0	23.0	23.0
Cond. mm <sup>2</sup> min	1	1	1	2.5	2.5	2.5
Cond. mm <sup>2</sup> max	2.5	2.5	2.5	6	6	6

Fig.: Type 2136

## Plug TE-Plus with Multi-Grip

- Screwless terminals
- High-temperature-resistant contact carrier
- Nickel plated contacts
- Special gland, simultaneous cable gland and seal
- Protection degree IP44

Ampere	Poles	110V 50-60 Hz		230V 50-60 Hz		400V 50-60 Hz		500V 50-60 Hz		100-300Hz > 50V		301-500Hz > 50V		Qty	each
		3pol 4h	4pol 4h	3pol 6h	4pol 9h	5pol 9h	3pol 9h	4pol 6h	5pol 6h	3pol 7h	4pol 7h	5pol 7h	3pol 10h		
16	3	21837		21866		21843		210169		210170		210171		10	125
16	4	21872		21839		21687		21688		21847		21849		10	145
16	5	210176		21840		21689		210178		210179		21879		10	180
32	3	21838		21690		21844		210184		210185		210186		10	240
32	4	21873		21841		21691		21692		21848		21850		10	260
32	5	210193		21842		21693		21623		210197		21885		10	310



2 MB 93

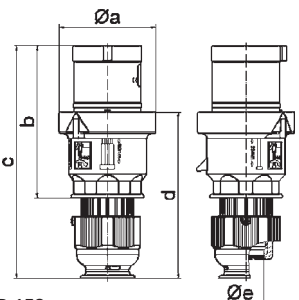
Ampere	16	16	16	32	32	32
Poles	3	4	5	3	4	5
a ø	51.0	57.5	65.0	66.0	66.0	72.0
b	95.0	95.0	97.0	118.0	118.0	117.0
c	145.0	145.0	152.0	178.0	178.0	181.0
d	109.0	109.0	116.0	133.0	133.0	135.5
e ø	18.0	18.0	21.0	23.0	23.0	27.0
Cond. mm <sup>2</sup> min	1	1	1	2.5	2.5	2.5
Cond. mm <sup>2</sup> max	2.5	2.5	2.5	6	6	6

Fig.: Type 21689

## Plug TE with Multi-Grip

- Nickel plated contacts
- Special gland, simultaneous cable gland and seal
- Screwless enclosure connection, self locking
- Protection degree IP44

Ampere	Poles	110V 50-60 Hz		230V 50-60 Hz		400V 50-60 Hz		500V 50-60 Hz		100-300Hz > 50V		301-500Hz > 50V		Qty	each
		3pol 4h	4pol 4h	3pol 6h	4pol 9h	5pol 9h	3pol 9h	4pol 6h	5pol 6h	3pol 7h	4pol 7h	5pol 7h	3pol 10h		
<b>QUICK-CONNECT®</b>															
63	4					210761		210763						5	660
63	5					210765								5	720
<b>Screw terminal:</b>															
63	3	21024		2104		21025		210030		21531		21624		5	535
63	4	2149		2150		2151		2152		21300		21526		5	595
63	5	2153		2154		2155		21167		21663		21419		5	650



2 MB 158

Ampere	63	63	63
Poles	3	4	5
a ø	96.0	96.0	96.0
b	153.0	153.0	153.0
c	233.0	233.0	233.0
d	167.0	167.0	167.0
e ø	36.0	36.0	36.0
Cond. mm <sup>2</sup> min	6	6	6
Cond. mm <sup>2</sup> max	16	16	16

Fig.: Type 2155