

Panel Mounting Socket Outlets

Panel Mounting Socket Outlets, Straight, IP44



Pages 56 - 58

Panel Mounting Socket Outlets, Angled, IP44



Pages 59 - 61

Panel Mounting Socket Outlets, Straight, IP67



Pages 62 - 64

Panel Mounting Socket Outlets, Angled, IP67



Pages 65 - 67

Panel Mounting Socket Outlets with Auxiliary Contact or PSK



Page 68 - 69

Panel Mounting Socket Outlets, Domestic



Page 69

Panel Mounting Socket Outlets for Harsh or Aggressive Conditions



Pages 70 - 71

Accessories for Sockets



Pages 72 - 73

Technical features



Screwless 63A Kontex contact

**Kontex contact**

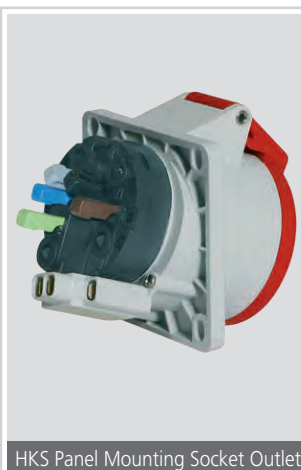
- Defined contacting at the sleeve opening by means of the finely adjustable stainless-steel spring with excellent outstanding insertion and withdrawal forces
- High self-cleaning effect when the plug pin is inserted and removed reduces the risk of soiling and therefore failure of the plug and socket
- Terminal accept all types of conductor without problem



Compact Surface Mounting Socket Outlet

**Surface Mounting Socket Outlets Quick-Connect**

- Cable entry from above
- Removable insert
- Quick-Connect terminals
- External fastening



HKS Panel Mounting Socket Outlet

**HKS panel mounting sockets for elegant control, regulation, monitoring, checking**

- Additional auxiliary contact switch (HKS) is actuated by the plug
- Available on CEE angled Panel Mounting Socket Outlets 16A and 32A as well as on Domestic sockets
- Electrical plug interlocking possible
- Potential-free switching
- Switching element, e.g. contactor, can be set separately



Quick-Connect terminals

**Screwless Quick-Connect terminals 16A and 32A**

- All Quick-Connect sockets are touch-safe
- No wire end ferrules necessary
- Pressing the contact slide with your finger closes the terminal
- Reliable and permanent connection by means of spring-clamp technology
- The damage-free conductor clamping guarantees an optimum connection over the entire service life
- Rewiring without additional handling of the conductor

# SURFACE MOUNTING SOCKET OUTLETS

- With screwless Quick-Connect technology
- IEC 60309-1/2, EN 60309, VDE 0623
- Protection degree IP44

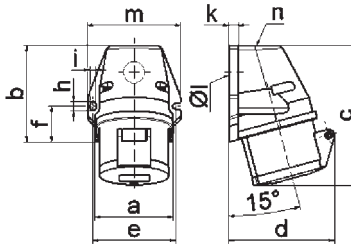
## Surface Mounting Socket Outlet Quick-Connect

- Screwless terminals
- Kontex contact
- Cable entry 1x at top (open) and 1x at bottom (closed)
- Protection degree IP44

| Ampere | Poles | 110V<br>50-60 Hz |      |        | 230V<br>50-60 Hz |      |      | 400V<br>50-60 Hz |      |      | 500V<br>50-60 Hz |      |      | 100-300Hz<br>> 50V |      |      | 301-500Hz<br>> 50V |      |      | Qty | each |
|--------|-------|------------------|------|--------|------------------|------|------|------------------|------|------|------------------|------|------|--------------------|------|------|--------------------|------|------|-----|------|
|        |       | 2P+E             | 3P+E | 3P+N+E | 3pol             | 4pol | 5pol | 3pol             | 4pol | 5pol | 3pol             | 4pol | 5pol | 3pol               | 4pol | 5pol | 3pol               | 4pol | 5pol |     |      |
| 16     | 3     |                  |      |        |                  |      |      |                  |      |      |                  |      |      |                    |      |      |                    |      | 10   | 170 |      |
| 16     | 4     |                  |      |        |                  |      |      |                  |      |      |                  |      |      |                    |      |      |                    |      | 10   | 200 |      |
| 16     | 5     |                  |      |        |                  |      |      |                  |      |      |                  |      |      |                    |      |      |                    |      | 10   | 220 |      |
| 32     | 3     |                  |      |        |                  |      |      |                  |      |      |                  |      |      |                    |      |      |                    |      | 10   | 260 |      |
| 32     | 4     |                  |      |        |                  |      |      |                  |      |      |                  |      |      |                    |      |      |                    |      | 10   | 275 |      |
| 32     | 5     |                  |      |        |                  |      |      |                  |      |      |                  |      |      |                    |      |      |                    |      | 10   | 300 |      |



Fig.: Type 112001



1 MB 19

| Ampere Poles  | 16 3  | 16 4  | 16 5  | 32 3  | 32 4  | 32 5  |
|---------------|-------|-------|-------|-------|-------|-------|
| a             | 59.5  | 72.4  | 72.4  | 79.1  | 79.1  | 79.1  |
| b             | 90.0  | 90.0  | 90.0  | 92.0  | 92.0  | 92.0  |
| c             | 130.0 | 130.0 | 131.0 | 142.0 | 142.0 | 142.0 |
| d             | 85.0  | 96.0  | 98.0  | 103.0 | 103.0 | 106.0 |
| e             | 62.0  | 77.0  | 77.0  | 84.0  | 84.0  | 84.0  |
| f             | 33.5  | 33.5  | 33.5  | 30.0  | 30.0  | 30.0  |
| h             | 9.0   | 9.0   | 9.0   | 9.0   | 9.0   | 9.0   |
| i             | 5.5   | 5.5   | 5.5   | 5.5   | 5.5   | 5.5   |
| k             | 8.0   | 9.0   | 9.0   | 9.0   | 9.0   | 9.0   |
| l ø           | 21.0  | 21.0  | 21.0  | 21.0  | 21.0  | 21.0  |
| m             | 72.0  | 87.0  | 87.0  | 94.0  | 94.0  | 94.0  |
| n             | M20   | M25   | M25   | M25   | M25   | M25   |
| Cond. mm² min | 1.5   | 1.5   | 1.5   | 2.5   | 2.5   | 2.5   |
| Cond. mm² max | 4     | 4     | 4     | 10    | 10    | 10    |

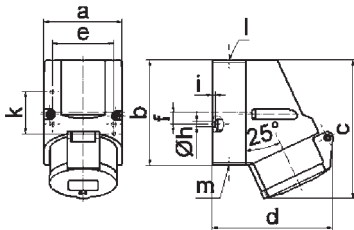
## Surface Mounting Socket Outlet Quick-Connect

- Screwless terminals
- Kontex contact
- Cable entry 1x at top (open), 1x at bottom and 1x at rear (closed)
- Base rotatable by 180°
- Protection degree IP44

| Ampere | Poles | 110V<br>50-60 Hz |      |        | 230V<br>50-60 Hz |      |      | 400V<br>50-60 Hz |      |      | 500V<br>50-60 Hz |      |      | 100-300Hz<br>> 50V |      |      | 301-500Hz<br>> 50V |  |    | Qty | each |
|--------|-------|------------------|------|--------|------------------|------|------|------------------|------|------|------------------|------|------|--------------------|------|------|--------------------|--|----|-----|------|
|        |       | 2P+E             | 3P+E | 3P+N+E | 3pol             | 4pol | 5pol | 3pol             | 4pol | 5pol | 3pol             | 4pol | 5pol | 3pol               | 4pol | 5pol |                    |  |    |     |      |
| 16     | 3     |                  |      |        |                  |      |      |                  |      |      |                  |      |      |                    |      |      |                    |  | 10 | 185 |      |
| 16     | 4     |                  |      |        |                  |      |      |                  |      |      |                  |      |      |                    |      |      |                    |  | 10 | 240 |      |
| 16     | 5     |                  |      |        |                  |      |      |                  |      |      |                  |      |      |                    |      |      |                    |  | 10 | 260 |      |



Fig.: Type 11906



1 MB 7

| Ampere Poles  | 16 3    | 16 4    | 16 5    |
|---------------|---------|---------|---------|
| a             | 64.0    | 75.0    | 75.0    |
| b             | 87.0    | 100.0   | 100.0   |
| c             | 117.0   | 129.0   | 131.0   |
| d             | 103.0   | 108.0   | 116.0   |
| e             | 51.0    | 59.0    | 59.0    |
| f             | -       | 11.0    | 11.0    |
| h ø           | 4.1     | 5.1     | 5.1     |
| i             | 4.5     | 4.5     | 4.5     |
| k             | 40.0    | -       | -       |
| l             | M20     | M20     | M20     |
| m             | for M20 | for M20 | for M20 |
| Cond. mm² min | 1.5     | 1.5     | 1.5     |
| Cond. mm² max | 4       | 4       | 4       |

## Surface Mounting Socket Outlet Quick-Connect

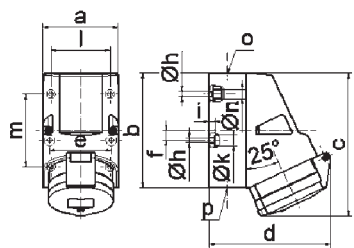
- Screwless terminals
- Kontex contact
- Cable entry 1x at top (open), 2x at bottom (closed)
- Base rotatable by 180°
- Suitable for feed-through wiring with special terminals
- Protection degree IP44

Double terminal

| Ampere | Poles | 110V<br>50-60 Hz |      |        | 230V<br>50-60 Hz |      |      | 400V<br>50-60 Hz |      |      | 500V<br>50-60 Hz |      |      | 100-300Hz<br>> 50V |      |      | 301-500Hz<br>> 50V |  |    | Qty | each |
|--------|-------|------------------|------|--------|------------------|------|------|------------------|------|------|------------------|------|------|--------------------|------|------|--------------------|--|----|-----|------|
|        |       | 2P+E             | 3P+E | 3P+N+E | 3pol             | 4pol | 5pol | 3pol             | 4pol | 5pol | 3pol             | 4pol | 5pol | 3pol               | 4pol | 5pol |                    |  |    |     |      |
| 16     | 4     |                  |      |        |                  |      |      |                  |      |      |                  |      |      |                    |      |      |                    |  | 10 | 305 |      |
| 16     | 5     |                  |      |        |                  |      |      |                  |      |      |                  |      |      |                    |      |      |                    |  | 10 | 325 |      |
| 32     | 3     |                  |      |        |                  |      |      |                  |      |      |                  |      |      |                    |      |      |                    |  | 10 | 350 |      |
| 32     | 4     |                  |      |        |                  |      |      |                  |      |      |                  |      |      |                    |      |      |                    |  | 10 | 365 |      |
| 32     | 5     |                  |      |        |                  |      |      |                  |      |      |                  |      |      |                    |      |      |                    |  | 10 | 405 |      |
| 16     | 5     |                  |      |        |                  |      |      |                  |      |      |                  |      |      |                    |      |      |                    |  | 10 | 330 |      |



Fig.: Type 11909



1 MB 2

| Ampere Poles  | 16 4   | 16 5   | 32 3   | 32 4   | 32 5   |
|---------------|--------|--------|--------|--------|--------|
| a             | 83.0   | 83.0   | 83.0   | 83.0   | 83.0   |
| b             | 126.0  | 126.0  | 126.0  | 126.0  | 126.0  |
| c             | 153.0  | 155.0  | 155.0  | 155.0  | 155.0  |
| d             | 127.0  | 130.0  | 130.0  | 130.0  | 136.0  |
| e             | 68.0   | 68.0   | 68.0   | 68.0   | 68.0   |
| f             | 11.0   | 11.0   | 11.0   | 11.0   | 11.0   |
| h ø           | 5.5    | 5.5    | 5.5    | 5.5    | 5.5    |
| i             | 6.5    | 6.5    | 6.5    | 6.5    | 6.5    |
| k ø           | 12.0   | 12.0   | 12.0   | 12.0   | 12.0   |
| l             | 65.0   | 65.0   | 65.0   | 65.0   | 65.0   |
| m             | 80.0   | 80.0   | 80.0   | 80.0   | 80.0   |
| n ø           | 10.0   | 10.0   | 10.0   | 10.0   | 10.0   |
| o             | M25    | M25    | M25    | M25    | M25    |
| p             | 2x M25 | 2x M25 | 2x M25 | 2x M25 | 2x M25 |
| Cond. mm² min | 1.5    | 1.5    | 2.5    | 2.5    | 2.5    |
| Cond. mm² max | 4      | 4      | 10     | 10     | 10     |