

Panel Mounting Socket Outlets

Panel Mounting Socket Outlets, Straight, IP44



Pages 56 - 58

Panel Mounting Socket Outlets, Angled, IP44



Pages 59 - 61

Panel Mounting Socket Outlets, Straight, IP67



Pages 62 - 64

Panel Mounting Socket Outlets, Angled, IP67



Pages 65 - 67

Panel Mounting Socket Outlets with Auxiliary Contact or PSK



Page 68 - 69

Panel Mounting Socket Outlets, Domestic



Page 69

Panel Mounting Socket Outlets for Harsh or Aggressive Conditions



Pages 70 - 71

Accessories for Sockets



Pages 72 - 73

Technical features



Screwless 63A Kontex contact

Kontex contact

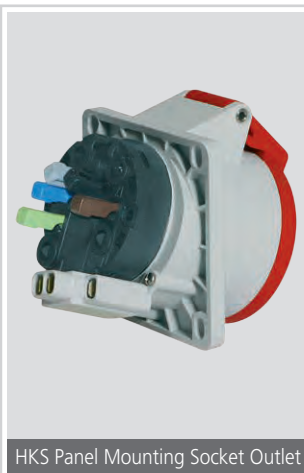
- Defined contacting at the sleeve opening by means of the finely adjustable stainless-steel spring with excellent outstanding insertion and withdrawal forces
- High self-cleaning effect when the plug pin is inserted and removed reduces the risk of soiling and therefore failure of the plug and socket
- Terminal accept all types of conductor without problem



Compact Surface Mounting Socket Outlet

Surface Mounting Socket Outlets Quick-Connect

- Cable entry from above
- Removable insert
- Quick-Connect terminals
- External fastening



HKS Panel Mounting Socket Outlet

HKS panel mounting sockets for elegant control, regulation, monitoring, checking

- Additional auxiliary contact switch (HKS) is actuated by the plug
- Available on CEE angled Panel Mounting Socket Outlets 16A and 32A as well as on Domestic sockets
- Electrical plug interlocking possible
- Potential-free switching
- Switching element, e.g. contactor, can be set separately



Quick-Connect terminals

Screwless Quick-Connect terminals 16A and 32A

- All Quick-Connect sockets are touch-safe
- No wire end ferrules necessary
- Pressing the contact slide with your finger closes the terminal
- Reliable and permanent connection by means of spring-clamp technology
- The damage-free conductor clamping guarantees an optimum connection over the entire service life
- Rewiring without additional handling of the conductor

SURFACE MOUNTING SOCKET OUTLETS

- With screwless Quick-Connect technology
- IEC 60309-1/2, EN 60309, VDE 0623
- Protection degree IP44

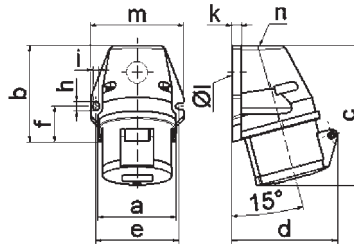
Surface Mounting Socket Outlet Quick-Connect

- Screwless terminals
- Kontex contact
- Cable entry 1x at top (open) and 1x at bottom (closed)
- Protection degree IP44

Ampere	Poles	110V 50-60 Hz			230V 50-60 Hz			400V 50-60 Hz			500V 50-60 Hz			100-300Hz > 50V			301-500Hz > 50V			Qty	each
		2P+E	3P+E	3P+N+E	3pol	4pol	5pol	3pol	4pol	5pol	3pol	4pol	5pol	3pol	4pol	5pol	3pol	4pol	5pol		
16	3				11912			11895											10	170	
16	4							11910	11905		11914								10	200	
16	5								112001										10	220	
32	3				11918			11919											10	260	
32	4							11921	11922		11924								10	275	
32	5								112002										10	300	



Fig.: Type 112001



1 MB 19

Ampere Poles	16 3	16 4	16 5	32 3	32 4	32 5
a	59.5	72.4	72.4	79.1	79.1	79.1
b	90.0	90.0	90.0	92.0	92.0	92.0
c	130.0	130.0	131.0	142.0	142.0	142.0
d	85.0	96.0	98.0	103.0	103.0	106.0
e	62.0	77.0	77.0	84.0	84.0	84.0
f	33.5	33.5	33.5	30.0	30.0	30.0
h	9.0	9.0	9.0	9.0	9.0	9.0
i	5.5	5.5	5.5	5.5	5.5	5.5
k	8.0	9.0	9.0	9.0	9.0	9.0
l ø	21.0	21.0	21.0	21.0	21.0	21.0
m	72.0	87.0	87.0	94.0	94.0	94.0
n	M20	M25	M25	M25	M25	M25
Cond. mm² min	1.5	1.5	1.5	2.5	2.5	2.5
Cond. mm² max	4	4	4	10	10	10

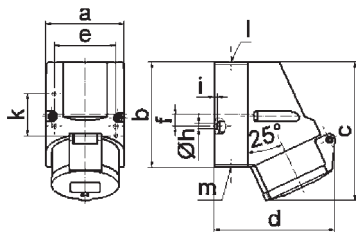
Surface Mounting Socket Outlet Quick-Connect

- Screwless terminals
- Kontex contact
- Cable entry 1x at top (open), 1x at bottom and 1x at rear (closed)
- Base rotatable by 180°
- Protection degree IP44

Ampere	Poles	110V 50-60 Hz			230V 50-60 Hz			400V 50-60 Hz			500V 50-60 Hz			100-300Hz > 50V			301-500Hz > 50V			Qty	each
		2P+E	3P+E	3P+N+E	3pol	4pol	5pol	3pol	4pol	5pol	3pol	4pol	5pol	3pol	4pol	5pol	3pol	4pol	5pol		
16	3				11928			11930	11931		11932		11933		11934				10	185	
16	4								11907										10	240	
16	5								11906										10	260	



Fig.: Type 11906



1 MB 7

Ampere Poles	16 3	16 4	16 5			
a	64.0	75.0	75.0			
b	87.0	100.0	100.0			
c	117.0	129.0	131.0			
d	103.0	108.0	116.0			
e	51.0	59.0	59.0			
f	-	11.0	11.0			
h ø	4.1	5.1	5.1			
i	4.5	4.5	4.5			
k	40.0	-	-			
l	M20	M20	M20			
m	for M20	for M20	for M20			
Cond. mm² min	1.5	1.5	1.5			
Cond. mm² max	4	4	4			

Surface Mounting Socket Outlet Quick-Connect

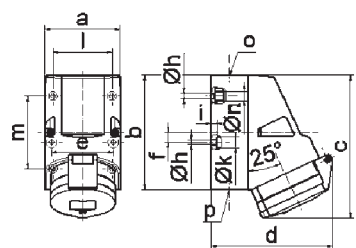
- Screwless terminals
- Kontex contact
- Cable entry 1x at top (open), 2x at bottom (closed)
- Base rotatable by 180°
- Suitable for feed-through wiring with special terminals
- Protection degree IP44

Double terminal

Ampere	Poles	110V 50-60 Hz			230V 50-60 Hz			400V 50-60 Hz			500V 50-60 Hz			100-300Hz > 50V			301-500Hz > 50V			Qty	each
		2P+E	3P+E	3P+N+E	3pol	4pol	5pol	3pol	4pol	5pol	3pol	4pol	5pol	3pol	4pol	5pol	3pol	4pol	5pol		
16	4								11944		11945								10	305	
16	5								11909		11947								10	325	
32	3				11948			11949											10	350	
32	4							11955	11956		11957		110073						10	365	
32	5				11960			110322	11962		11963								10	405	
16	5								110451										10	330	



Fig.: Type 11909



1 MB 2

Ampere Poles	16 4	16 5	32 3	32 4	32 5
a	83.0	83.0	83.0	83.0	83.0
b	126.0	126.0	126.0	126.0	126.0
c	153.0	155.0	155.0	155.0	155.0
d	127.0	130.0	130.0	130.0	136.0
e	68.0	68.0	68.0	68.0	68.0
f	11.0	11.0	11.0	11.0	11.0
h ø	5.5	5.5	5.5	5.5	5.5
i	6.5	6.5	6.5	6.5	6.5
k ø	12.0	12.0	12.0	12.0	12.0
l	65.0	65.0	65.0	65.0	65.0
m	80.0	80.0	80.0	80.0	80.0
n ø	10.0	10.0	10.0	10.0	10.0
o	M25	M25	M25	M25	M25
p	2x M25	2x M25	2x M25	2x M25	2x M25
Cond. mm² min	1.5	1.5	2.5	2.5	2.5
Cond. mm² max	4	4	10	10	10