

SURFACE MOUNTING SOCKET OUTLETS

- IEC 60309-1/2, EN 60309, VDE 0623
- Protection degree IP44

Surface Mounting Socket Outlet Quick-Connect, straight

- Screwless terminals
- Kontex contact
- Cable entry 7x M20/25
- With large wiring space
- Protection degree IP44

Ampere	Poles	110V 50-60 Hz	230V 50-60 Hz	400V 50-60 Hz	500V 50-60 Hz	100-300Hz > 50V	301-500Hz > 50V	Qty	each
		3pol 4pol 5pol 4h 4h 4h	3pol 4pol 5pol 6h 9h 9h	3pol 4pol 5pol 9h 6h 6h	3pol 4pol 5pol 7h 7h 7h	3pol 4pol 5pol 10h 10h 10h	3pol 4pol 5pol 2h 2h 2h		
16	3	110542	110541	110543				10	320
16	4	110545	110544	110546				10	335
16	5	110548	110547	110549				10	355
32	3	110551	110550	110552				10	380
32	4	110554	110553	110555				10	395
32	5	110557	110556	110558				10	435

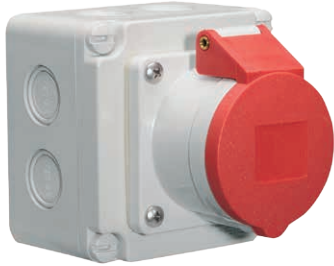
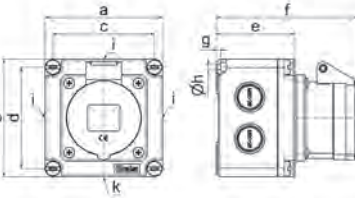


Fig.: Type 110558



1 MB 120

Ampere Poles	16 3	16 4	16 5	32 3	32 4	32 5
a	102.0	102.0	102.0	102.0	102.0	102.0
b	102.0	102.0	102.0	102.0	102.0	102.0
c	88.0	88.0	88.0	88.0	88.0	88.0
d	88.0	88.0	88.0	88.0	88.0	88.0
e	68.0	68.0	68.0	68.0	68.0	68.0
f	119.0	121.0	122.0	130.0	130.0	131.0
g	4.0	4.0	4.0	4.0	4.0	4.0
h ø	4.5	4.5	4.5	4.5	4.5	4.5
i	2xM20/25	2xM20/25	2xM20/25	2xM20/25	2xM20/25	2xM20/25
k	M20/25	M20/25	M20/25	M20/25	M20/25	M20/25
Cond. mm² min	1.5	1.5	1.5	2.5	2.5	2.5
Cond. mm² max	4	4	4	10	10	10

Surface Mounting Socket Outlet Quick-Connect

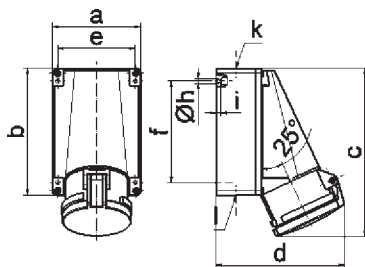
- Cable entry 1x at top (open), 2x at bottom (closed)
- Base rotatable by 180°
- Nickel plated contacts
- Kontex contact
- Box terminals
- Protection degree IP44

Ampere	Poles	110V 50-60 Hz	230V 50-60 Hz	400V 50-60 Hz	500V 50-60 Hz	100-300Hz > 50V	301-500Hz > 50V	Qty	each	
		3pol 4pol 5pol 4h 4h 4h	3pol 4pol 5pol 6h 9h 9h	3pol 4pol 5pol 9h 6h 6h	3pol 4pol 5pol 7h 7h 7h	3pol 4pol 5pol 10h 10h 10h	3pol 4pol 5pol 2h 2h 2h			
63	4	QUICK-CONNECT							5	900
63	5			110415	110445			5	945	
Screw terminal:										
63	3	1106	1104	1107	11795	11345	11640	5	780	
63	4	1125	1126	1127	1128	11221	11051	5	795	
63	5	1129	1130	1124	11208	11429	1108	5	830	

In the case of screw terminal Surface Mounting Socket Outlets with PILOT, please add -P to the end of the order number.



Fig.: Type 1124



1 MB 4

Ampere Poles	63 3	63 4	63 5
a	118.0	118.0	118.0
b	170.0	170.0	170.0
c	223.0	223.0	223.0
d	168.0	168.0	168.0
e	104.0	104.0	104.0
f	136.0	136.0	136.0
h ø	6.1	6.1	6.1
i	6.0	6.0	6.0
k	M40	M40	M40
l	M 32/32	M 32/32	M 32/32
Cond. mm² min	6	6	6
Cond. mm² max	25	25	25

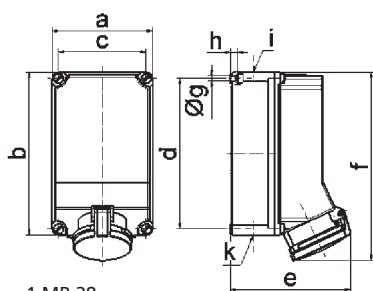
Surface Mounting Socket Outlet Quick-Connect TE

- Screwless terminals
- Kontex contact
- High-temperature-resistant contact carrier
- Nickel plated contacts
- Box terminals
- With large wiring space
- Protection degree IP44

Ampere	Poles	110V 50-60 Hz	230V 50-60 Hz	400V 50-60 Hz	500V 50-60 Hz	100-300Hz > 50V	301-500Hz > 50V	Qty	each
		3pol 4pol 5pol 4h 4h 4h	3pol 4pol 5pol 6h 9h 9h	3pol 4pol 5pol 9h 6h 6h	3pol 4pol 5pol 7h 7h 7h	3pol 4pol 5pol 10h 10h 10h	3pol 4pol 5pol 2h 2h 2h		
63	4			110486				1	1580
63	5			110487				1	1690



Fig.: Type 110487



1 MB 28

Ampere Poles	63 4	63 5
a	160.0	160.0
b	260.0	260.0
c	140.0	140.0
d	240.0	240.0
e	184.0	184.0
f	302.0	302.0
g ø	8.1	8.1
h	10.0	10.0
i	M40	M40
k	M32/40	M32/40
Cond. mm² min	6	6
Cond. mm² max	25	25