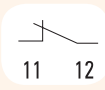

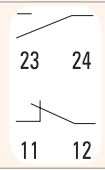
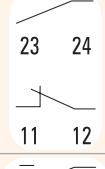
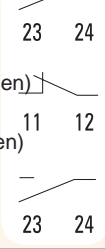
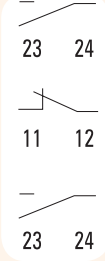
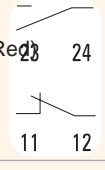
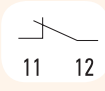
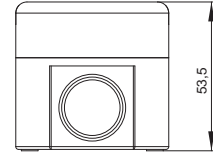
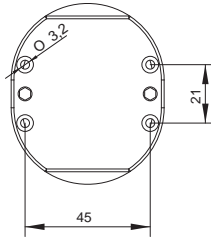
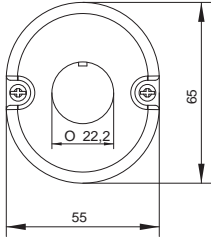


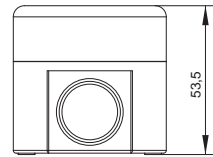
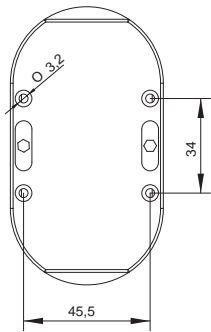
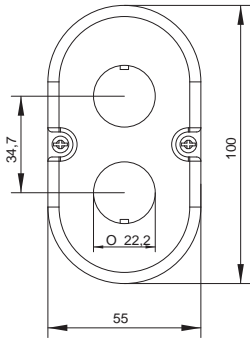
Push-button stations

Type	Description	Function	Scheme	Code number	Weight [kg]	Packaging [pcs]
ESE1-V2	Single station Flush Head Actuator - Red - STOP - 1 ,NC'	STOP (Red)		004771440	0,073	1/50
ESE1-V3	Single station Flush Head Actuator - Green - START - 1 ,NO	START (Green)		004771441	0,073	1/50
ESE2-V4	Two station - Flush Head Actuator - Green - START - 1 ,NO' ; Flush Head Actuator - Red - STOP - 1 ,NC'	START (Green) STOP (Red)		004771442	0,127	1/50
ESE2-V5	Two station - Flush Head Actuator - Green - START - 1 ,NO' ; Mushroom Head Actuator - Red - STOP - 1 ,NC'	ON (Green) OFF (Red)		004771443	0,135	1/50
ESE3-V6	Three station - Flush Head Actuator - Green - FORWARD - 1 ,NO' ; Flush Head Actuator - Red - STOP (Red) ; Flush Head Actuator - Green REVERSE (Green) REVERSE - 1 ,NO'	FORWARD (Green) STOP (Red) REVERSE (Green)		004771444	0,169	1/50
ESE3-V7	Three station - Flush Head Actuator - Green UP - 1 ,NO' ; Flush Head Actuator - Red - STOP - 1 ,NC' ; Flush Head Actuator - Green DOWN (Green) ,NO'	UP (Green) STOP (Red) DOWN (Green)		004771445	0,169	1/50
ESE3-V8	Three station - Red LED indicator 240V ; Flush Head Actuator - Green START - 1 ,NO' ; Flush Head Actuator - RED - STOP - 1 ,NC'	LED indicator (Red) START (Green) STOP (Red)		004771446	0,172	1/50
ESE1Y-V1	Emergency STOP - Yellow cover, black base - Red Actuator	STOP (Red)		004771447	0,073	1/50

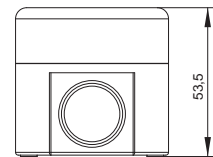
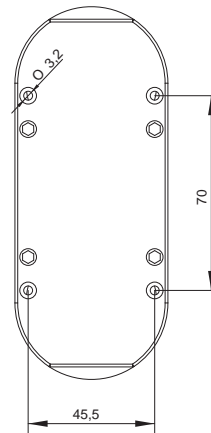
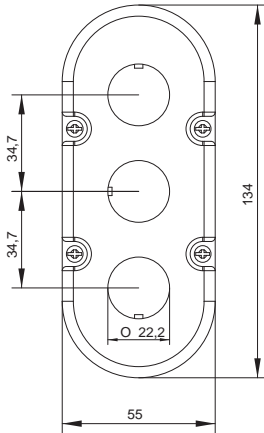
Single station enclosure



Two station enclosure



Three station enclosure



Two station push-button with integral push buttons

