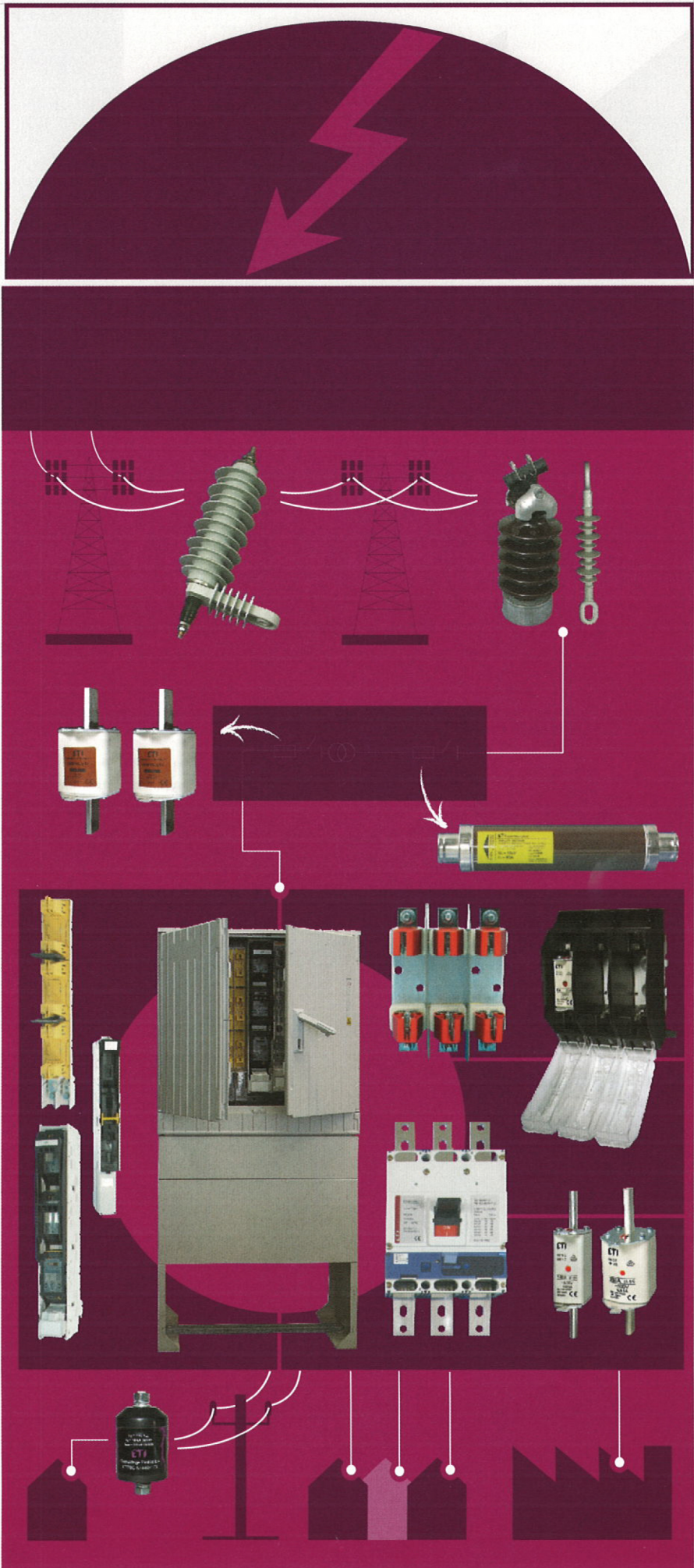


ELECTRIC POWER DISTRIBUTION

ETI provides high-quality solutions for the protection of low and high-voltage electrical installations in the field of electric power distribution. We supply a wide range of high-voltage fuse-links of the type VV, low voltage power circuit breakers ETIBREAK, distribution cabinets KVS, medium voltage surge arresters ETISURGE and ceramic as well as polymeric insulators. The products are internationally certified and carry several quality marks.



Low breaking capacity moulded case circuit breakers

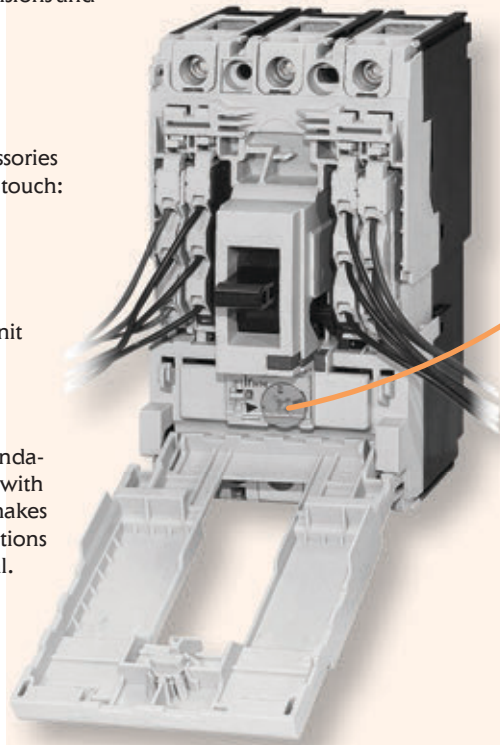
Advantages of low breaking capacity MCCBs

→ New series EB2S of MCCBs has excellent performances with reduced dimensions and new modern design.

→ Practical internal accessories can be installed with one touch:

- auxiliary switch
- alarm switch
- shunt trip unit
- undervoltage trip unit

→ Unique accessory cover opens with only one screw.



→ Customer can select between fixed and adjustable protection:

- Frame size 160A: fixed (series LF, SF & HF) or thermal trip adjustable (series LA, SA & HA)
- Frame size 250A: fixed (series LF, SF & HF) or thermal-magnetic trip adjustable (series LA, SA & HA)

→ EB2S series complies to safety recommendation standard IEC 60204-1. EB2S is marked with IEC symbol "direct opening action". This makes these devices also ideal for all OEM applications where safety and reliability are essential.

Legend: L -> economic, lower short-circuit breaking capacity
 S -> standard short-circuit breaking capacity
 H -> high short-circuit breaking capacity

EB2S 160 fixed protection

Type	I_n (A)	Code No.	Poles	I_{cu}/I_{cs} 400V [kA]	Adjustment thermal/magnetic	Weight [kg]	Packaging [pcs]
EB2S 160/3LF 16A 3p	16	004671801	3	16/8	fixed/adjusted	0,80	1
EB2S 160/3LF 20A 3p	20	004671802					
EB2S 160/3LF 25A 3p	25	004671803					
EB2S 160/3LF 32A 3p	32	004671804					
EB2S 160/3LF 40A 3p	40	004671805					
EB2S 160/3LF 50A 3p	50	004671806					
EB2S 160/3LF 63A 3p	63	004671807					
EB2S 160/3LF 80A 3p	80	004671808					
EB2S 160/3LF 100A 3p	100	004671809					
EB2S 160/3LF 125A 3p	125	004671810					
EB2S 160/3LF 160A 3p	160	004671811	4	16/8	fixed/adjusted	1,00	
EB2S 160/4LF 16A 4p	16	004671814					
EB2S 160/4LF 20A 4p	20	004671815					
EB2S 160/4LF 25A 4p	25	004671816					
EB2S 160/4LF 32A 4p	32	004671817					
EB2S 160/4LF 40A 4p	40	004671818					
EB2S 160/4LF 50A 4p	50	004671819					
EB2S 160/4LF 63A 4p	63	004671820					
EB2S 160/4LF 80A 4p	80	004671821					
EB2S 160/4LF 100A 4p	100	004671822					
EB2S 160/4LF 125A 4p	125	004671823					
EB2S 160/4LF 160A 4p	160	004671824					

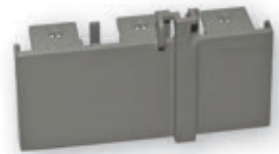
Accessories for EB2S 250			
	Code No.	Poles	Packaging [pcs]
Motor operator, M02S 250 AC230-240V	004671980	3p, 4p	1
Motor operator, M02S 250 DC24V	004671981		
Breaker mounted handle, R02S 250	004671982		
Panel mounted handle, R02S 250P	004671983		
Attach busbar, ZB2S 250/3 Spread	004671984	3p	set = 3pcs
Attach busbar, ZB2S 250/4 Spread	004671995	4p	set = 4pcs
Rear Connections, RC2S 250/3	004671996	3p	set = 3pcs
Rear Connections, RC2S 250/4	004671997	4p	set = 4pcs
Cable Clamps, SP2S 250/3	004671998	3p	set = 3pcs
Cable Clamps, SP2S 250/4	004671999	4p	set = 4pcs
Interpole barrier, IZ2S 250	004671985	3p, 4p	1
Terminal covers, PR2S 250/3 short	004671986	3p	
Terminal covers, PR2S 250/4 short	004672000	4p	
Terminal covers, PR2S 250/3 long	004672001	3p	
Terminal covers, PR2S 250/4 long	004672002	4p	
Terminal covers, PR2S 250/3 spread	004672003	3p	
Terminal covers, PR2S 250/4 spread	004672004	4p	
Terminal covers, PR2S 250/3 RC	004672005	3p	
Terminal covers, PR2S 250/4 RC	004672006	4p	
Terminal covers, PR2S 250/3 CC	004672007	3p	
Terminal covers, PR2S 250/4 CC	004672008	4p	
Busbar adapter 3p, DA-60/250/3/FE-5	001696162	3p	
Busbar adapter 4p, DA-60/250/4/FE-5	001696163	4p	
DIN 125 & 250	004671186	3p, 4p	



PR2S Long



PR2S Short



PR2S RC



M02S



DA-60

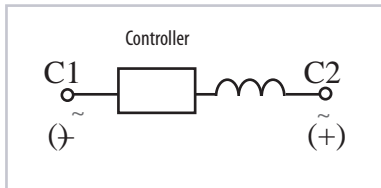
Technical data



Shunt Trip Unit

Ratings of Shunt Trip

Rated Voltage	Voltage AC		Voltage DC
	200-240	380-450	24
Excitation Current (A)	0.014	0.0065	0.03



Terminal Designations of Shunt Trips

The permissible voltage is from 85% to 110% of the rated voltage for AC or 75% to 125% thereof for DC.

Ensure that the voltage does not drop exceeding the permissible voltage range when SHT is actuated.

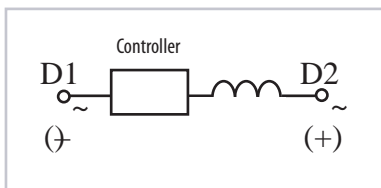
Breaker contacts usually start opening within 30 ms after the rated voltage is applied to the breaker.



Undervoltage Trips

Ratings of Undervoltage Trips

Rated Voltage	Power supply capacity (VA)		Excitation current (mA)
	Voltage AC		Voltage DC
	200-240	380-450	24
Power Supply Capacity (A)	2.8	2.3	23



Terminal Designations of Undervoltage Trips

External accessories



Features

- Installation and removal ease: Simply rotate two knobs allows the motor operator to be installed on or removed from the breaker.
- High-speed, stable actuation: The operating time as short as up to 0.1 second makes it possible to use the motor operators for synchronized closing of breakers.
- Silent operation: MO2S use a direct drive system, providing operational silence.
- "Lock-in off" capability: This capability allows the breaker to be padlocked in the OFF state. Up to three padlocks with a 5 to 8 mm hasp diameter can be used. Padlocks are not supplied.