



EV 3253



EV 1632



EVO 1653



ER 3253



ER 1632



ERR 1643



ERR 1632

Plugs IP44

Type	Code No.	Description	Weight [kg]	Packaging [pcs]
EV 1632	004482016	16A, 230V, 2P+PE	0,128	14
EV 1643	004482017	16A, 400V, 3P+PE	0,145	14
EV 1653	004482018	16A, 400V, 3P+N+PE	0,159	14
EV 3232	004482019	32A, 230V, 2P+PE	0,193	10
EV 3243	004482020	32A, 400V, 3P+PE	0,235	10
EV 3253	004482021	32A, 400V, 3P+N+PE	0,261	10

Reversing plugs IP44

Type	Code No.	Description	Weight [kg]	Packaging [pcs]
EVO 1653	004482022	16A, 400V, 3P+N+PE	0,156	14
EVO 3253	004482023	32A, 400V, 3P+N+PE	0,259	10

Built-in appliance inlets IP44, ANGLED

Type	Code No.	Description	Weight [kg]	Packaging [pcs]
ER 1632	004482129	16A, 230V, 2P+PE	0,122	12
ER 1643	004482130	16A, 400V, 3P+PE	0,144	12
ER 1653	004482131	16A, 400V, 3P+N+PE	0,153	12
ER 3232	004482109	32A, 230V, 2P+PE	0,122	12
ER 3243	004482132	32A, 400V, 3P+PE	0,196	12
ER 3253	004482133	32A, 400V, 3P+N+PE	0,234	12

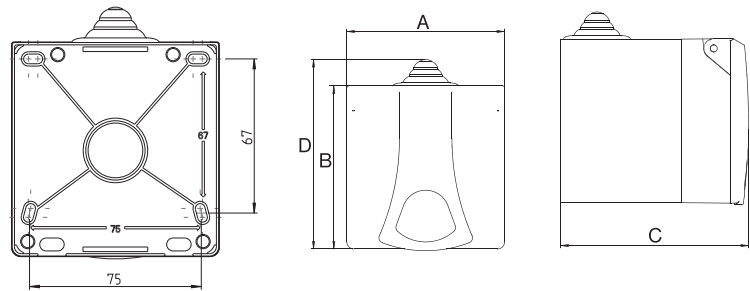
Built-in appliance inlets IP44, STRAIGHT

Type	Code No.	Description	Weight [kg]	Packaging [pcs]
ERR 1632	004482108	16A, 230V, 2P+PE	0,093	6
ERR 1643	004482110	16A, 400V, 3P+PE	0,113	6
ERR 1653	004482111	16A, 400V, 3P+N+PE	0,127	6
ERR 3243	004482112	32A, 400V, 3P+PE	0,156	6
ERR 3253	004482113	32A, 400V, 3P+N+PE	0,179	6
ERRO 1653	004482114	16A, 400V, 3P+N+PE, phase reverse	0,127	6
ERRO 3253	004482115	32A, 400V, 3P+N+PE, phase reverse	0,183	6

Technical data

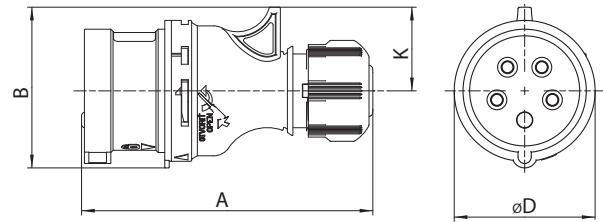
Surface mounted boxes with socket IP44

Type \ (mm)	A	B	C	D
EZBN 165	90	93	106	108
EZBN 1643	90	93	106	108
EZBN 1653	90	93	106	108
EZBN 3243	90	93	106	108
EZBN 3253	90	93	106	108



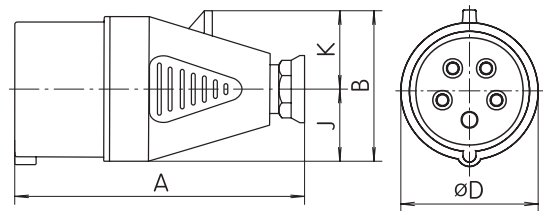
Plugs IP44

Type \ (mm)	A	B	ØD	K
EV 1632	126	64	64	32
EV 1643	132	66	64	34
EV 1653/ EVO 1653	132	73	64	38
EV 3243	162	79	73	41
EV 3253/ EVO 3253	162	86,5	73	45



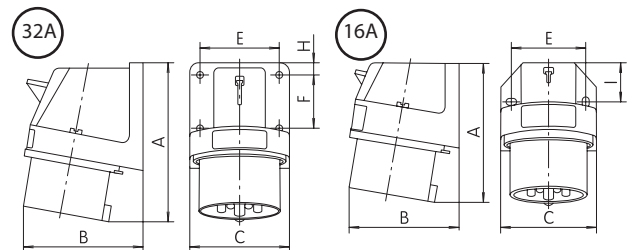
Plugs IP44

Type \ (mm)	A	B	ØD	J	K	Pg
EV 3232	154	77	72	36	41	P21



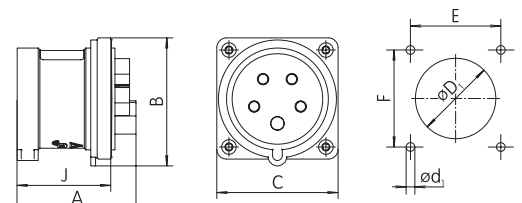
Built-in appliance inlets IP44, ANGLED

Type \ (mm)	A	B	C	E	F	I
ER 1632	91	68	57,2	45	-	20
ER 164x	97	77	65,2	50	-	27,5
ER 1653	98	79	65,2	50	-	27,5
ER 3232	128	88	72,5	58	40	9
ER 324x	128	88	72,3	58	40	9
ER 3253	129	90	72,3	58	40	9



Built-in appliance inlets IP44, STRAIGHT

Type \ (mm)	A	B	C	ød1	øD1	E	F	J
ERR 1632	67	75	75	4,2	57	60	60	48
ERR 1643	66	75	75	4,2	57	60	60	48
ERR 1653	66	75	75	4,2	57	60	60	48
ERR 3243	73	75,3	75	4,2	64	60	60	58
ERR 3253	73	80	75	4,2	64	60	60	58



Built-in appliance inlets IP44, STRAIGHT, phase reverse

Type \ (mm)	A	B	C	ød1	øD1	E	F	J
ERRO 1653	66	75	75	4,2	57	60	60	48
ERRO 3253	73	80	75	4,2	64	60	60	58

Wall plugs IP44

Type \ (mm)	A	B	C	ød1	E1	E2	F
EP 1632	147	81	78	4	30	53	58
EP 1643	146	81	78	4	30	53	58
EP 1653	146	81	78	4	30	53	58
EP 3243	168	95	88	4	35	61	60
EP 3253	168	95	88	4	35	61	60

Wall plugs IP44

Type \ (mm)	A	B	C	ød1	E	I	Pg	Modification
EP 3232	147	105	82	5,2	67	34	P21	A

Wall plugs IP44

Type \ (mm)	A	B	C	ød1	E1	E2	F
EPO 1653	146	81	78	4	30	53	58
EPO 3253	168	95	88	4	35	61	60

Connecting sockets IP67

Type \ (mm)	A	B	øD	J	K	Pg
ESH 1632	136	78,5	70	35	43,5	16
ESH 1643	142	85,5	78	39	46,5	16
ESH 1653	145	92,5	87	43,5	49	16
ESH 3232	166	101,5	93	46,5	55	21
ESH 3243	166	101,5	93	46,5	55	21
ESH 3253	168	108	100	50	58	21
ESH 6343	224	-	113	196	-	29

