

Industrial plug-in equipment

Benefits:

- reliable and safe
- ambient temperature -25 °C to +40 °C
- high temperature tolerance up to 125 for "live" parts
- the right colors with the standards

Application - Our industrial plugs and sockets have been designed to connect electrical devices and consumers to low voltage in a broad spectrum of human activities. They are frequently applied in civil engineering, electric assembly sector, engineering industry, chemical and cosmetic industry, pharmaceutical industry and health service, agriculture, food industry and textile industry, as well as in cinemas, theatres, sports facilities, holiday resorts, etc.

IP44 series



ES 1643



ES 1632



EZ 1643



EZ 3232



EZCZ 1653

Connecting sockets IP44

Type	Code No.	Description	Weight [kg]	Packaging [pcs]
ES 1632	004482000	16A, 230V, 2P+PE	0,17	12
ES 1643	004482001	16A, 400V, 3P+PE	0,18	12
ES 1653	004482002	16A, 400V, 3P+N+PE	0,20	12
ES 3232	004482003	32A, 230V, 2P+PE	0,24	10
ES 3243	004482004	32A, 400V, 3P+PE	0,29	9
ES 3253	004482005	32A, 400V, 3P+N+PE	0,31	9

Wall sockets IP44

Type	Code No.	Description	Weight [kg]	Packaging [pcs]
EZ 1632	004482034	16A, 230V, 2P+PE	0,19	9
EZ 1643	004482035	16A, 400V, 3P+PE	0,21	9
EZ 1653	004482036	16A, 400V, 3P+N+PE	0,22	9
EZ 3232	004482037	32A, 230V, 2P+PE	0,26	12
EZ 3243	004482038	32A, 400V, 3P+PE	0,30	6
EZ 3253	004482039	32A, 400V, 3P+N+PE	0,35	6

Combinated sockets IP44

Type	Code No.	Description	Weight [kg]	Packaging [pcs]
EZCZ-S 1643	004482050	16A, 400V/230V, 3P+PE plus EE 16S Schuko IP44	0,34	6
EZCZ-S 1653	004482051	16A, 400V/230V, 3P+N+PE plus EE 16S Schuko IP44	0,36	6
EZCZ-S 3243	004482052	32A, 400V/230V, 3P+PE plus EE 16S Schuko IP44	0,42	4
EZCZ-S 3253	004482053	32A, 400V/230V, 3P+N+PE plus EE 16S Schuko IP44	0,45	4

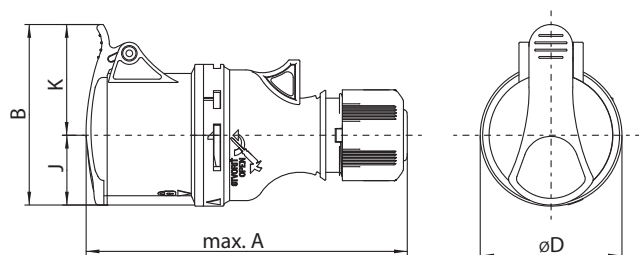
Industrial plug-in equipment

Technical data

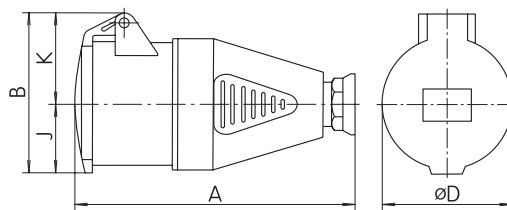
Rated voltage U_n	230V, 400V
Rated frequency f_n	50 - 60Hz
Rated current I_n	16, 32, 63, 125 A
Ambient temperature	-25°C... +40°C
Standards	IEC 60309 - 1, 2

Connecting sockets IP44

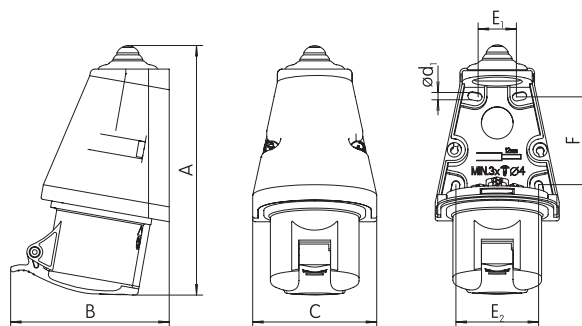
Type/(mm)	A	B	$\varnothing D$	J	K
ES1632	145	79	64	29	50
ES1643	145	81,5	56	31,5	50
ES1653	145	89	64	35	54
ES3243	175,5	96	65	38	58
ES3253	179	103	73	41	62


Connecting sockets IP44

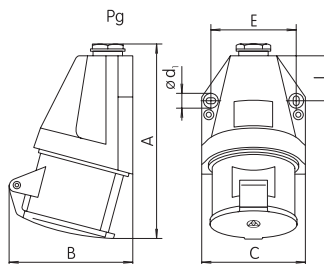
Type/(mm)	A	B	$\varnothing D$	J	K	Pg
ES3232	165	93	72	42	51	21


Wall sockets IP44

Type/(mm)	A	B	C	$\varnothing d_1$	E1	E2	F
EZ1632	157	90	78	4	30	53	58
EZ1643	157	99	78	4	30	53	58
EZ1653	157	104	78	4	30	53	58
EZ3243	179	118	88	4	35	61	60
EZ3253	179	121	88	4	35	61	60

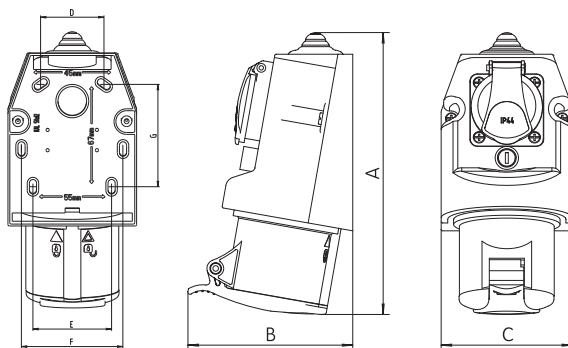

Wall sockets IP44

Type/(mm)	A	B	C	$\varnothing d_1$	E	I	Pg	Modification
EZ3232	155	101	82	5,2	67	34	P21	A



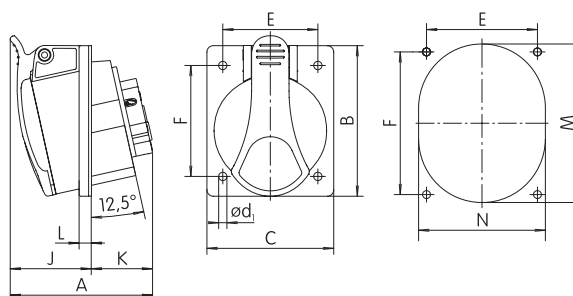
Combinated sockets IP44

Type / (mm)	A	B	C	D	E	F	G
EZCZ (EZCZ-S) 16xx	182	113	90	45	55	71	67
EZCZ (EZCZ-S) 32xx	193	118	90	45	55	71	67



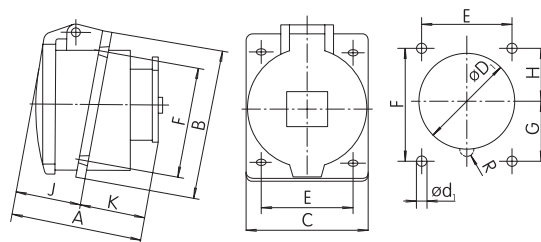
Built-in sockets IP54

Type \ (mm)	A	B	C	øD1	J	E	F	K	L	M	N
EE 1643	73	85	75	5,2	42	60	60	31	7	66	58
EE 1653	75	85	75	5,2	43	60	60	32	7	72	64
EE 3243	90	95	80	5,2	52	60	70	38	8	78	68
EE 3253	92	95	80	5,2	53	60	70	39	8	84	70
EZ 3253	179	121	4	35	4	35	88	4	35	61	60



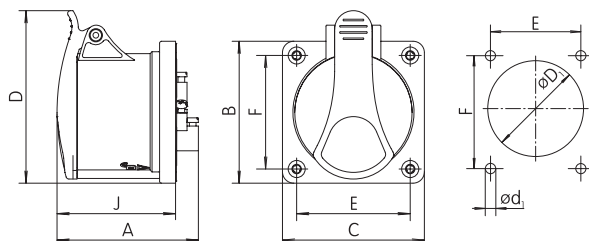
Built-in sockets IP54

Type \ (mm)	A	B	C	øD1	øD1	E	F	G	H	J	K
EE 1632	61	85	75	56	5,5	60	60	30	30	32	29
EE 3232	84	95	80	68	5,5	60	70	38	32	42	42



Built-in sockets IP54, STRAIGHT

Type \ (mm)	A	B	C	øD1	øD1	D	E	F	J
EER 1632	76	75	75	57	4,2	88	60	60	61
EER 1643	76	75	75	57	4,2	88	60	60	61
EER 1653	77	75	75	57	4,2	91	60	60	63
EER 3243	91	75	75	64	4,2	96	60	60	71
EER 3253	93	75	75	64	4,2	103	60	60	75



Flush mounted boxes with socket IP44

Type \ (mm)	A	B	C	E	F	G	H	J	K
EZB xxxx	115,5	93	90	30	30	48,5	25,5	37,7	73,8

