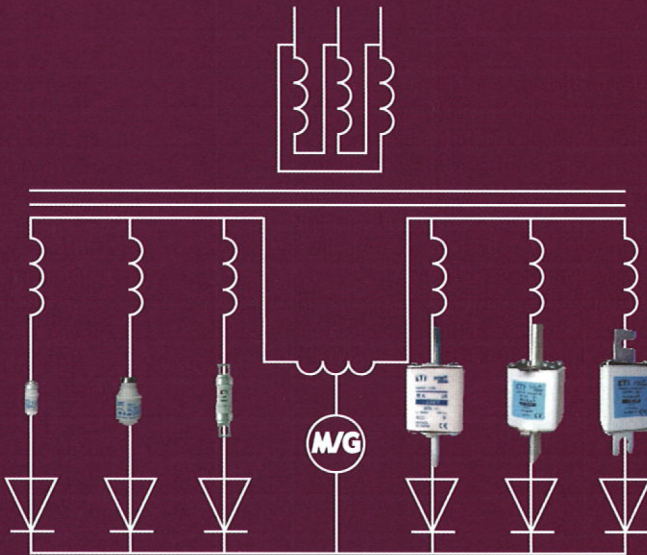


## ULTRA QUICK - SEMICONDUCTOR PROTECTION

ETI fuse-links for semiconductor protection ULTRA QUICK present an optimal solution for protection of power semiconductors, such as diodes, thyristors and other power semiconductors in DC and AC power applications such as AC/DC, DC/AC, DC/DC converters and frequency converters. ETI fuse-links elements for semiconductor protection comply with IEC 60269 and VDE 0636 standards.



SEMICONDUCTOR

# VV/HH

High voltage fuse-links 836

Technical data 845

**CESI** atestirano

## HIGH VOLTAGE FUSES



**ETI** POWER NEEDS CONTROL

## High voltage fuse-links

### High voltage fuse-links for protection of voltage transformers

#### Ordering Code Numbers

rated voltage	Dimension "e" according to DIN and IEC (mm)	rated current	VVT-D	Tube diameter "d" (mm)	weight
$U_n$ [kV]		[A]			[kg]
10/24	235	2A	004251033	53	1,45
		4A	004251034		



### Fuse bases for VV fuse-links

#### 1-pole Indoor mounting

type	Rated voltage [kV]	code No.	Dimension "e" according to DIN and IEC [mm]	packaging [pcs]
VVP 7,2 1p-N	7,2	004229010	192	1
VVP 12 1p-N	12	004239010	292	1
VVP 17,5 1p-N	17,5	004249010	367	1
VVP 24 1p-N	24	004259010	442	1
VVP 36 1p-N	36	004269010	537	1

\* when choosing right fuse base consider size and rated voltage of fuse-link

\*\* due to safety reasons fuse bases cannot be later adjusted on different length by a user

\*\*\* indoor edition of fuse base may not be used for outside applications



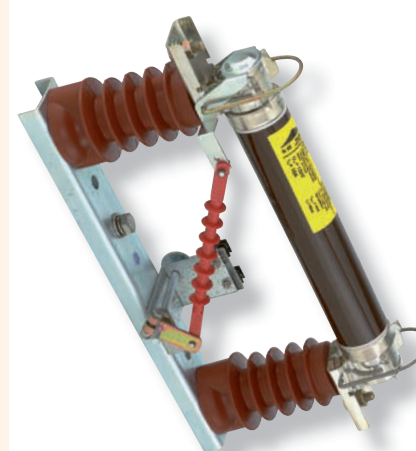
#### 1-pole Indoor mounting with microswitch fuse monitoring

type	Rated voltage [kV]	code No.	Dimension "e" according to DIN and IEC [mm]	packaging [pcs]
VVP 7,2 1p-N + NK 7,2 BSW	7,2	004349019	192	1
VVP 12 1p-N + NK 12 BSW	12	004349020	292	1
VVP 17,5 1p-N + NK 17,5 BSW	17,5	004349021	367	1
VVP 24 1p-N + NK 24 BSW	24	004349022	442	1
VVP 36 1p-N + NK 36 BSW	36	004349023	537	1

\* when choosing right fuse base consider size and rated voltage of fuse-link

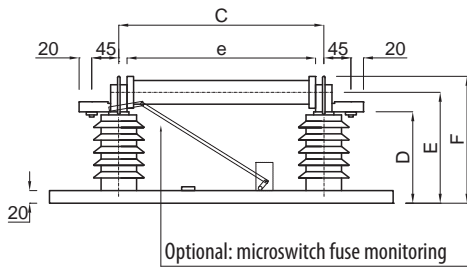
\*\* due to safety reasons fuse bases cannot be later adjusted on different length by a user

\*\*\* Rotation in installation is allowed only with the pin striker pointing upward (as in the photo on the right)

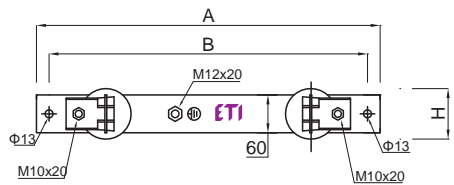
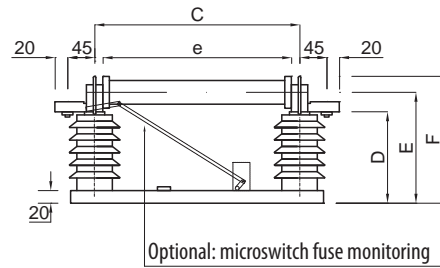


1-pole fuse-base	Rated voltage [kV]	A [mm]	B [mm]	C [mm]	D [mm]	E [mm]	F [mm]	"e" Fuse length	Version
INDOOR MOUNTING	7,2	445	405	225	152	195	250	192	V1
	12	545	505	322	152	195	250	292	V1
	17,5	480	280	397	172	215	270	367	V2
	24	555	355	475	202	245	300	442	V2
	36	670	350	570	302	345	400	537	V2

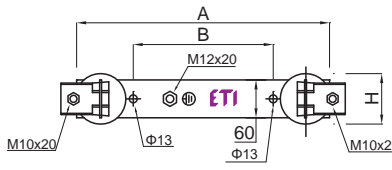
V1



V2

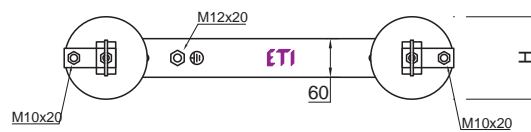
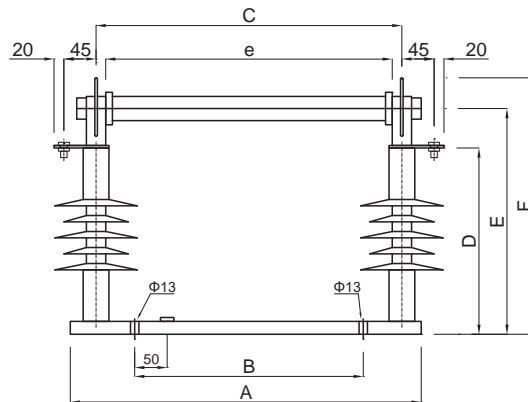


internal fuse base



1-pole fuse-base	Rated voltage [kV]	A [mm]	B [mm]	C [mm]	D [mm]	E [mm]	F [mm]	"e" Fuse length	Version
OUTDOOR MOUNTING	12	405	205	330	310	370	420	292	V3
	24	555	355	475	310	370	420	442	V3

V3



external fuse base