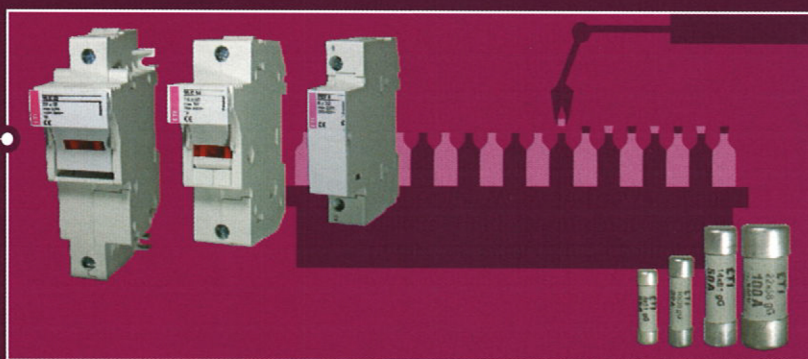


INDUSTRIAL INSTALLATIONS

High-quality protection of installations and devices in industry is ensured by wide selection of fuse-links and circuit breakers. Particularly important is the wide range of NV/NH fuse-links and switchgear combinations, i.e. fuse blocks and switch disconnectors. We also offer MCB's and power circuit breakers ETIBREAK. And not to forget ETICON contactors, plug-in outfit and line-up terminals SPOJ and overvoltage protection devices ETITEC. As well we can not provide solutions without switch disconnectors ETISWITCH and actuators and indicators ETISIG. The products are internationally certified and carry several quality marks.



INDUSTRY

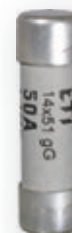
Cylindrical fuse-links

CH14

Rated current/Rated voltage	Code No. gG	Code No. gG with striker pin	Code No. aM	Code No. aM with striker pin	Weight [g]	Packaging [pcs]
2A, 690V	002630001	006711015*	002631001	006711029*	18,6	10/500
4A, 690V	002630003	006711005*	002631003	006711030*		
6A, 690V	002630005	006711016*	002631005	006711031*		
8A, 690V	002630006	006711017*	002631006	006711032*		
10A, 690V	002630007	006711018*	002631007	006711033*		
12A, 690V	002630008	006711006*	002631008	006711034*		
16A, 690V	002630009	006711001*	002631009	006711035*		
20A, 690V	002630011	006711002*	002631011	006711036*		
25A, 690V	002630013	006711003*	002631013	006711037*		
32A, 500V	002630015	006711019	002631015	006711038		
40A, 500V	002630017	006711004	002631017	006711039		
50A, 500V	002630019	006711020**	002631019	006711040**		

* 500V

**400V



CH22

Rated current/Rated voltage	Code No. gG	Code No. gG with striker pin	Code No. aM	Code No. aM with striker pin	Weight [g]	Packaging [pcs]
4A, 690V		006711008			51	10/500
6A, 690V		006711009		006711041		
8A, 690V		006711021		006711042		
10A, 690V		006711010		006711043		
12A, 690V		006711022		006711044		
16A, 690V	002640009	006711023	002641009	006711045		
20A, 690V	002640011	006711024	002641011	006711046		
25A, 690V	002640013	006711025	002641013	006711047		
32A, 690V	002640015	006711011	002641015	006711048		
40A, 690V	002640017	006711026	002641017	006711049		
50A, 690V	002640019*	006711027	002641019	006711050		
63A, 690V	002640021*	006711012	002641021*	006711051		
80A, 500V	002640023	006711013	002641023	006711052		
100A, 500V	002640025	006711014	002641025	006711053		

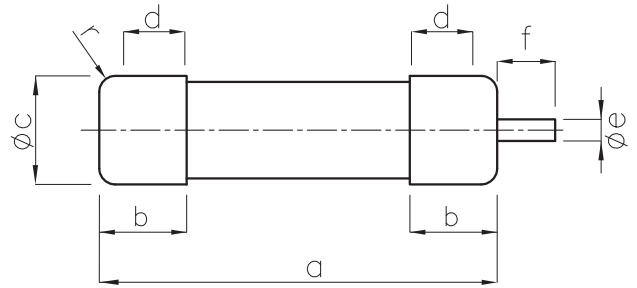
* 500V



Technical data

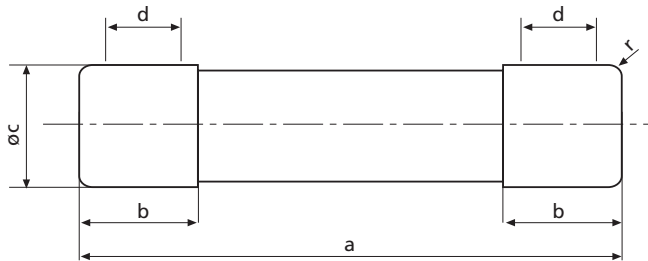
Cylindrical fuse-link

Technical data	
Rated voltage	400 V AC, 500 V AC, 690 V AC
Rated current	CH 8 1-25 A/400 V
	CH 10 0,5-16 A/500 V, 20-32 A/400 V
	CH 14 2-25 A/690 V, 32-50 A/500 V
	CH 22 16-40 A/690 V (50 A/690 V aM), 50-100 A/500 V
Rated frequency	50 Hz
Rated breaking capacity	CH 8 50 kA
	CH 10 100 kA
	CH 14 2-25 A/80 kA, 32-50 A/120 kA
	CH 22 16-40 A/80 kA (50 A/80 kA aM), 50-100 A/120 kA
Characteristics	gG, aM
Body material	ceramic
Material of contact parts	CuZn28, gal.Ag



With striker pin

size	e	f
14 x 51	3,8	7,5
22 x 58	3,8	7,5



size	a	b _{max.}	c	d _{min.}	r
8 x 32	31,5±0,5	6,7	8,5±0,1	4	1±0,5
10 x 38	38,0±0,6	10,5	10,3±0,1	6	1,5±0,5
14 x 51	51,0±0,6/-1	13,8	14,3±0,1	7,5	±1
22 x 58	58,0±0,1	16,2	22,2±0,1	11	±1

Time current characteristics
I/t, gG
CH8

