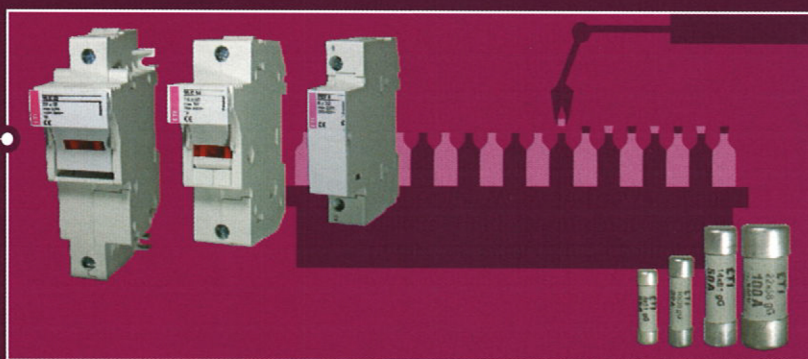


INDUSTRIAL INSTALLATIONS

High-quality protection of installations and devices in industry is ensured by wide selection of fuse-links and circuit breakers. Particularly important is the wide range of NV/NH fuse-links and switchgear combinations, i.e. fuse blocks and switch disconnectors. We also offer MCB's and power circuit breakers ETIBREAK. And not to forget ETICON contactors, plug-in outfit and line-up terminals SPOJ and overvoltage protection devices ETITEC. As well we can not provide solutions without switch disconnectors ETISWITCH and actuators and indicators ETISIG. The products are internationally certified and carry several quality marks.



INDUSTRY

Cylindrical fuse-links

Cylindrical fuse-link CH

Rated current
1-100 A

Fusing characteristics
gG, aM

Application: Cylindrical fuse-links are used as the most secure protection of electrical installations, control, and signal circuits against overloads and short circuit currents. Their dimensions comply with IEC 60269-1 and IEC 60269-2. They are used mainly in industrial areas, since their dimensions allow voltages of up to 690 V. The most common sizes are the following four: 8x32, 10x38, 14x51 and 22x58.



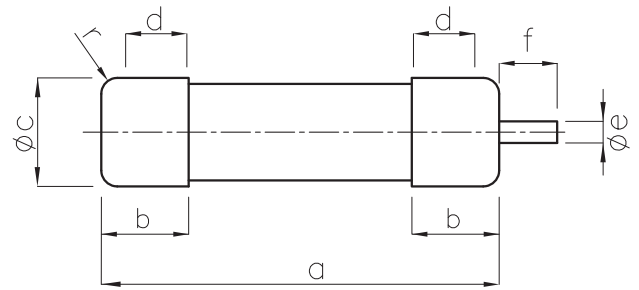
CH8				
Rated current/Rated voltage	Code No. gG	Code No. aM	Weight [g]	Packaging [pcs]
1A, 400V	002610000	002611000	4	10/1000
2A, 400V	002610001	002611001		
4A, 400V	002610003	002611003		
6A, 400V	002610005	002611005		
8A, 400V	002610006	002611006		
10A, 400V	002610007	002611007		
12A, 400V	002610008	002611008		
16A, 400V	002610009	002611009		
20A, 400V	002610011	002611011		
25A, 400V	002610013	002611013		



CH10				
Rated current/Rated voltage	Code No. gG	Code No. aM	Weight [g]	Packaging [pcs]
0.5A, 500V	002620017	002621017	7,5	10/500
1A, 500V	002620000	002621000		
2A, 500V	002620001	002621001		
4A, 500V	002620003	002621003		
6A, 500V	002620005	002621005		
8A, 500V	002620006	002621006		
10A, 500V	002620007	002621007		
12A, 500V	002620008	002621008		
16A, 500V	002620009	002621009		
20A, 400V	002620011	002621011		
25A, 400V	002620013	002621013		
32A, 400V	002620015	002621015		

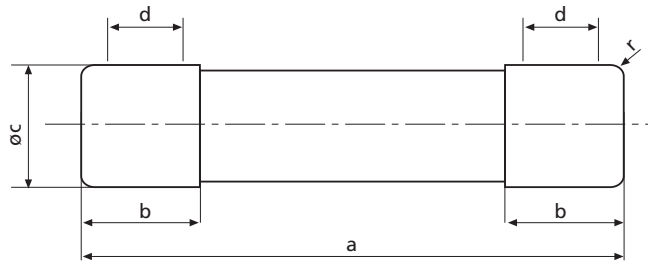
Cylindrical fuse-link

Technical data	
Rated voltage	400 V AC, 500 V AC, 690 V AC
Rated current	CH 8 1-25 A/400 V
	CH 10 0,5-16 A/500 V, 20-32 A/400 V
	CH 14 2-25 A/690 V, 32-50 A/500 V
	CH 22 16-40 A/690 V (50 A/690 V aM), 50-100 A/500 V
Rated frequency	50 Hz
Rated breaking capacity	CH 8 50 kA
	CH 10 100 kA
	CH 14 2-25 A/80 kA, 32-50 A/120 kA
	CH 22 16-40 A/80 kA (50 A/80 kA aM), 50-100 A/120 kA
Characteristics	gG, aM
Body material	ceramic
Material of contact parts	CuZn28, gal.Ag



With striker pin

size	e	f
14 x 51	3,8	7,5
22 x 58	3,8	7,5



size	a	b _{max.}	c	d _{min.}	r
8 x 32	31,5±0,5	6,7	8,5±0,1	4	1±0,5
10 x 38	38,0±0,6	10,5	10,3±0,1	6	1,5±0,5
14 x 51	51,0±0,6/-1	13,8	14,3±0,1	7,5	±1
22 x 58	58,0±0,1	16,2	22,2±0,1	11	±1

Time current characteristics
I/t, gG
CH8

