

Surge arrester ETITEC group C T2 EN/IEC/VDE: T2/II/C

Description

ETITEC C T2 is surge arrester for indoor application. Group C surge protection is in accordance with VDE class C. This protection corresponds to IEC class II. The protection is made at the subdistribution board, as the second level of protection against overvoltage indirect lightning strikes. In case of permanent arrester damage, thermal protection is activated which signalize faulty arrester. ETITEC C T2 255/20 G is an overvoltage arrester with gas discharge tube for protection against indirect lightning strikes. It is used as a galvanic separation between N-PE conductor in TT network systems.

*Note: First number of designation 1+0, 2+0, 3+1 etc. indicates the number of varistors. Second one means the following: number 0 indicates there is no gas discharge tube, number 1 indicates there is.

Advantages:

- optical indication of faulty device (green ok, red false)
- remote signalisation (RC version only)
- DIN rail mounting (EN 60715)
- high discharge currents
- high degree of protection
- varistor is the protective element
- metal snapper, new way of mounting on DIN rail (easier, quicker)
- round-off shape compatible with ETIMAT
- modular design
- IEC/EN 61643-11
- RoHS compliant
- connection up to 35mm²

ETITEC C T2

New!

Type	Code No.	I_n / I_{max} (8/20) [kA]	U_c [V AC]	Weight [g]	Packaging [pcs]
ETITEC C T2 275/20 1+0	002440393	20/40	275 VAC	128	1/12
ETITEC C T2 275/20 1+0 RC	002440394	20/40	275 VAC	133	1/12
ETITEC C T2 275/20 4+0	002440395	20/40	275 VAC	456	1/3
ETITEC C T2 275/20 4+0 RC	002440396	20/40	275 VAC	471	1/3
ETITEC C T2 275/20 2+0	002440397	20/40	275 VAC	244	1/7
ETITEC C T2 275/20 2+0 RC	002440398	20/40	275 VAC	249	1/7
ETITEC C T2 275/20 3+0	002440399	20/40	275 VAC	352	1/5
ETITEC C T2 275/20 3+0 RC	002440400	20/40	275 VAC	357	1/5
ETITEC C T2 275/20 1+1	002440401	20/40	275 VAC	225	1/7
ETITEC C T2 275/20 1+1 RC	002440402	20/40	275 VAC	230	1/7
ETITEC C T2 275/20 3+1	002440403	20/40	275 VAC	441	1/3
ETITEC C T2 275/20 3+1 RC	002440404	20/40	275 VAC	446	1/3
ETITEC C T2 440/20 1+0	002440405	20/40	440 VAC	130	1/12
ETITEC C T2 440/20 1+0 RC	002440406	20/40	440 VAC	145	1/12
ETITEC C T2 440/20 4+0	002440407	20/40	440 VAC	466	1/3
ETITEC C T2 440/20 4+0 RC	002440408	20/40	440 VAC	471	1/3
ETITEC C T2 440/20 2+0	002440409	20/40	440 VAC	247	1/7
ETITEC C T2 440/20 2+0 RC	002440410	20/40	440 VAC	252	1/7
ETITEC C T2 440/20 3+0	002440411	20/40	440 VAC	356	1/5
ETITEC C T2 440/20 3+0 RC	002440412	20/40	440 VAC	361	1/5
ETITEC C T2 255/20 G	002440413	20/40	255 VAC	118	1/12
MODUL ETITEC C T2 275/20	002440414	20/40	275 VAC	56	12/12
MODUL ETITEC C T2 440/20	002440415	20/40	440 VAC	58	12/12
MODUL ETITEC C T2 255/20 G	002440416	20/40	255 VAC	36	12/12

* RC -> remote signalisation Note: I_n - defined per single pole

Connection terminals

Type	code No.	weight [g]	packaging [pcs]	Connection terminals for
Iz16/1F/2/ETITEC	002921081	9	50/600	2 modules connection
Iz16/1F/3/ETITEC	002921082	15	50/600	3 modules connection
Iz16/1F/4/ETITEC	002921083	20	50/600	4 modules connection

For module width 17,8 mm.



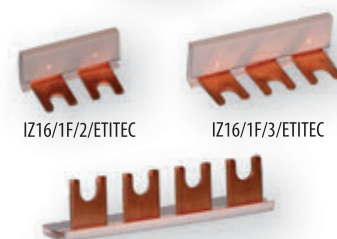
ETITEC C T2 275/20 1+0 ETITEC C T2 275/20 1+0 RC



ETITEC C T2 275/20 4+0



MODUL ETITEC C T2 275/20



Iz16/1F/2/ETITEC

Iz16/1F/3/ETITEC

Iz16/1F/3/ETITEC

Surge arrester ETITEC group C T2

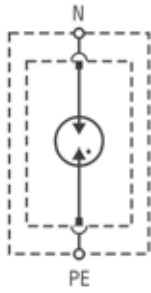
EN/IEC/VDE: T2/II/C

ETITEC C T2			
Type	275/20	440/20	255/20 G
In accordance with	IEC/EN 61643-11		
Category IEC/EN/VDE	II/T2/C		
Max. continuous operating voltage (AC) U_c	275	440	255
Nominal AC voltage U_0	230 V 50-60 Hz		
TOV immunity U_r (AC)	335 V/5s withstand	335 V/5s withstand	1200 V
	440 V/120 min safe disconnection	440 V/120 min withstand	-
Nominal discharge current (8/20) I_n	20 kA		
Max. discharge current (8/20) I_{max}	40 kA		
Charge			
Protection level U_p - at I_n (8/20)	<1,5 kV	<2,0 kV	<1,5 kV
Follow current I_f	x		>100 A
Response time t_A	< 25 ns		< 100 ns
Residual current I_{pe} at U_{ref}	< 0,2 mA		-
Thermal decoupler	✓		-
Torque	3,0 Nm		
Back-up fuse (if mains > 125A)	125 A gG		-
Short-circuit current rating I_{scCR}	25 kA / 50 Hz		-
Temperature range	- 40°C ... +70°C		
Cross-section of connection wire	min. 6mm ² , max. single strand 35mm ² , multi-strand 25mm ²		
Mounting	indoors on top hat fixing rail 35 mm (EN 60715)		
Degree of protection	IP 20		
Casing material	thermoplastic; extinguishing degree UL 94 V-0		
Dimensions	1 TE ... 4 TE		
Indication of disconnector operation	red flag		
Permissible humidity	5% - 95%		
Additional data for ETITEC C-RC			
Remote signalisation (RC)	✓		-
Switching capability (RC)	AC: 250V/0.5A; 125V/3A		-
Cross-section of connection wire (RC)	max. 1.5 mm ²		-
Torque (RC)	0,25 Nm		-

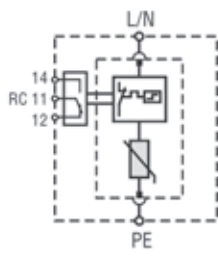
Type of network and nr. of SPD poles

Network	Nr of poles (SPD configuration)
TNC 1 phase	1+0
TNC 3 phase	3+0
TNS 1 phase	2+0 / 1+1
TNS 3 phase	4+0 / 3+1
TT 1 phase	1+1
TT 3 phase	3+1
IT 1 phase	2+0
IT 3 phase	4+0

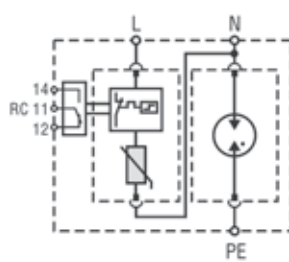
At TNC, TNS, TT systems with $U_n=230V$, recommended U_c value of SPD is 275V.
At IT system, recommended U_c value of SPD is 440V.



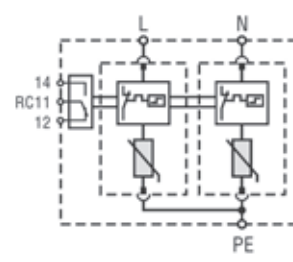
ETITEC CT2 G



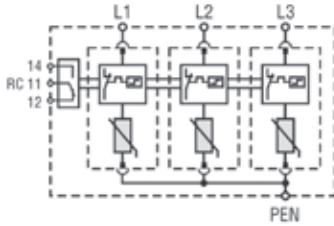
ETITEC CT2 1+0 RC



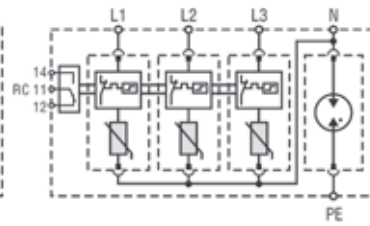
ETITEC CT2 1+1 RC



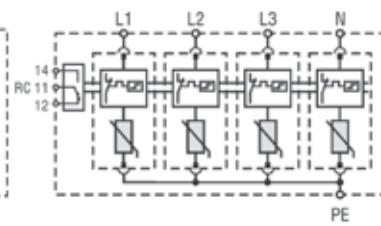
ETITEC CT2 2+0 RC



ETITEC CT2 3+0 RC



ETITEC CT2 3+1 RC



ETITEC CT2 4+0 RC

