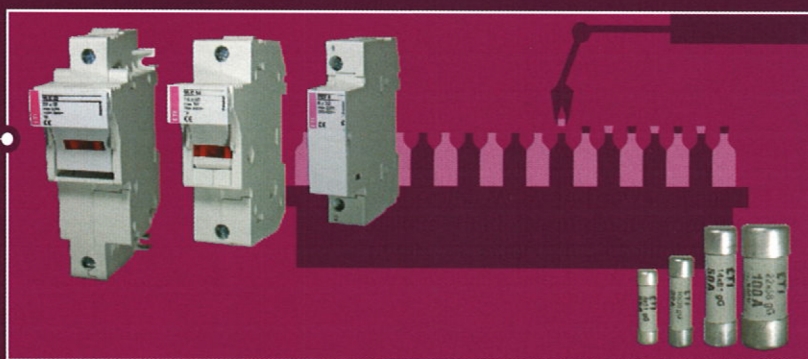


INDUSTRIAL INSTALLATIONS

High-quality protection of installations and devices in industry is ensured by wide selection of fuse-links and circuit breakers. Particularly important is the wide range of NV/NH fuse-links and switchgear combinations, i.e. fuse blocks and switch disconnectors. We also offer MCB's and power circuit breakers ETIBREAK. And not to forget ETICON contactors, plug-in outfit and line-up terminals SPOJ and overvoltage protection devices ETITEC. As well we can not provide solutions without switch disconnectors ETISWITCH and actuators and indicators ETISIG. The products are internationally certified and carry several quality marks.



INDUSTRY

Accessories

Gauge piece



VD II for fuse base E 27				
I _n [A]	Colour	Code No.	Weight [g]	Packaging [pcs]
2	pink	002342001	13	25/450
4	brown	002342002	13	25/450
6	green	002342003	13	25/450
10	red	002342004	11	25/450
16	grey	002342005	11	25/450
20	blue	002342006	11	25/450
25	yellow	002342007	11	25/450

VD III for fuse base E33				
I _n [A]	Colour	Code No.	Weight [g]	Packaging [pcs]
35	black	002343001	19	25/300
50	white	002343002	18	25/300
63	copper	002343003	16	25/300

Fuse carrier D



Fuse carrier K DII					
Type	I _n [A]	Code No.	Screw	Weight [g]	Packaging [pcs]
K DII	25	002332003	E 27	35	50/600

Fuse carrier K DIII					
Type	I _n [A]	Code No.	Screw	Weight [g]	Packaging [pcs]
K DIII	63	002333002	E 33	59	30/360

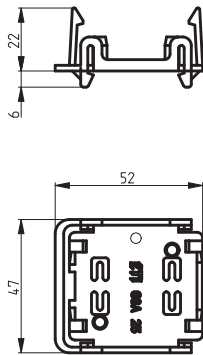
Protection cover



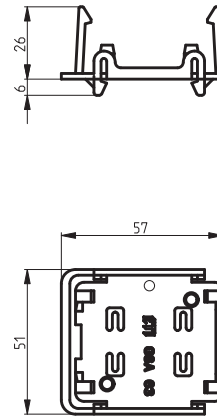
1-pole protection cover for fuse base					
Type	I _n [A]	Code No.	Screw	Weight [g]	Packaging [pcs]
EZN, EZV	25	002352001	E 27	16	30/390
EZN, EZV	63	002353002	E 33	12	30/360

3-pole protection cover for fuse base				
Type	Code No.	Weight [g]	Packaging [pcs]	
EZN, EZV 25/3	002352003	40	12/120	
EZN, EZV 63/3	002353004	40	12/120	

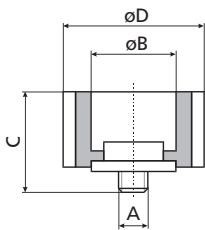
Plastic mounting plate GSA 25



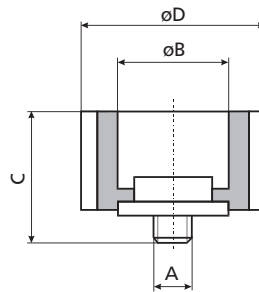
Plastic mounting plate GSA 63



Gauge Piece



VD II for fuse base E 27



VD III for fuse base E 33

VD II for fuse base E 27

I _n [A]	dimension			
	A	B	C	D
2	3/16"	6,5	17	24
4	3/16"	6,5	17	24
6	3/16"	6,5	17	24
10	3/16"	8,5	17	24
16	3/16"	10,5	17	24
20	3/16"	12,5	17	24
25	3/16"	14,5	17	24

VD III for fuse base E 33

I _n [A]	dimension			
	A	B	C	D
35	3/16"	16,5	17	30
50	3/16"	18,5	17	30
63	3/16"	20,5	17	30

Fuse carrier D

Fuse carrier

type	dimension			
	A	B	C	D
K DII	34	44	12	35
K DIII	43	44	12	43

