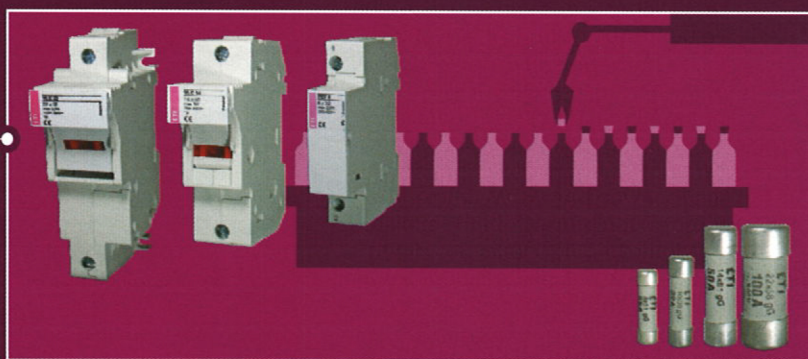


INDUSTRIAL INSTALLATIONS

High-quality protection of installations and devices in industry is ensured by wide selection of fuse-links and circuit breakers. Particularly important is the wide range of NV/NH fuse-links and switchgear combinations, i.e. fuse blocks and switch disconnectors. We also offer MCB's and power circuit breakers ETIBREAK. And not to forget ETICON contactors, plug-in outfit and line-up terminals SPOJ and overvoltage protection devices ETITEC. As well we can not provide solutions without switch disconnectors ETISWITCH and actuators and indicators ETISIG. The products are internationally certified and carry several quality marks.



INDUSTRY

Special holder



Special holder		
Code No.	Weight [g]	Packaging [pcs]
002231000	1	25/300

Fuse-disconnection units

Fuse-switch disconnecter VLD01

Rated current
2 - 6, 10, 16 A

Utilization category
AC22

Fuse-switch disconnecter is a protection device with an exchangeable for D01 fuse link. This system enables the following protecting advantages, concerning the D0 fuse:

- Replacement of the fuse-link can be done with a movable holder, without danger of direct contact to the parts under voltage.
- The device can be switched on without screwing, contact pressure is applied automatically by a spring.
- Complete protection against touch by VBG 4.
- In position 1 and 0, the fuse-link operation indicator is visible through a transparent window.

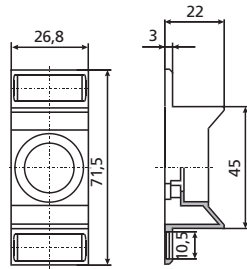


1-pole				
I_n [A]	U_n [V]	Code No.	Weight [g]	Packaging [pcs]
6	230/400	002261001	67	12/108
10	230/400	002261002	67	12/108
13	230/400	002261004	67	12/108
16	230/400	002261003	67	12/108

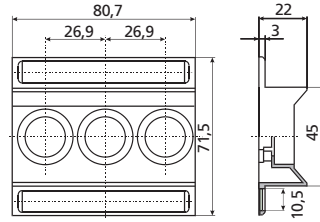


1-pole + N				
I_n [A]	U_n [V]	Code No.	Weight [g]	Packaging [pcs]
6	230	002261016	135	6/54
10	230	002261017	135	6/54
13	230	002261019	135	6/54
16	230	002261018	135	6/54

Protection cover



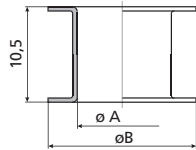
D01, D02



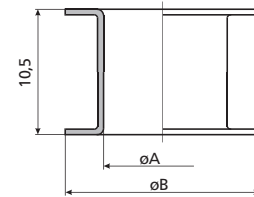
D01/3, D02/3

Gauge piece

V D01 for fuse base E 14		
I_n [A]	dimension	
	$\varnothing A$	$\varnothing B$
2	7,9	12
4	7,9	12
6	7,9	12
10	9,1	12

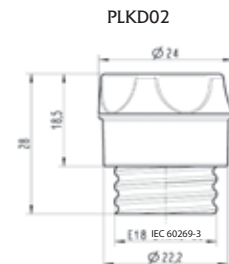
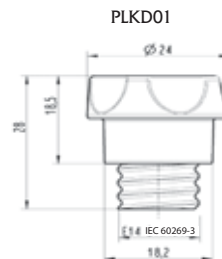
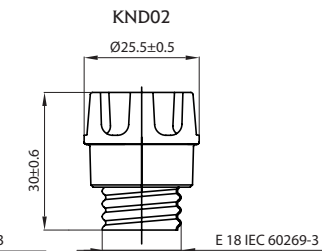
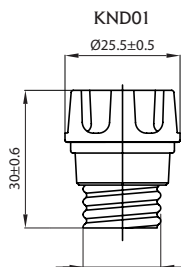


V D02 for fuse base E 18		
I_n [A]	dimension	
	$\varnothing A$	$\varnothing B$
2*	7,9	16,6
4*	7,9	16,6
6*	7,9	16,6
10*	9,1	16,6
16*	10,3	16,6
20	11,5	16,6
25	12,7	16,6
35	13,9	16,6
50	15,1	16,6



*For using fuse-links D01 and fuse bases D02.

Fuse carrier D0

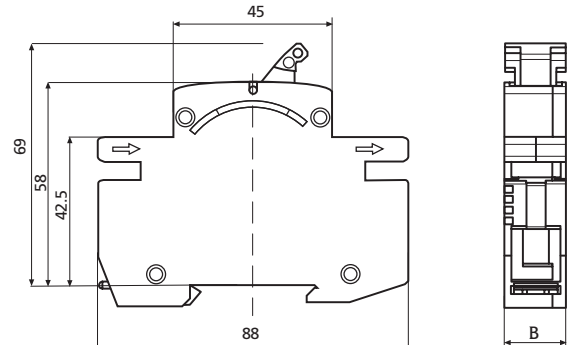


Technical data

Fuse - switch disconnecter VLD01

Technical data:

Rated voltage U_n	230 V, 230/400 V, 400 V a.c.
Rated current I_n	2-6 A, 10 A, 13 A, 16 A
Rated frequency f_n	45-62 Hz
Utilization category	AC-22 A
Mechanical life	10.000 cycles
Electrical life	1500 cycles
Poles	1p, 1p+N, 2p, 3p, 3p+N
Standards	IEC/EN 60947-1 IEC/EN 60947-3 DIN EN 60947-1 VDE 0660-100 DIN EN 60947-3 VDE 0660-107 IEC 60269-1 Ed. 4.1 2009-07 IEC 60269-3 Ed. 4.0 2010-05
Terminal capacity	1,5 -25mm ²

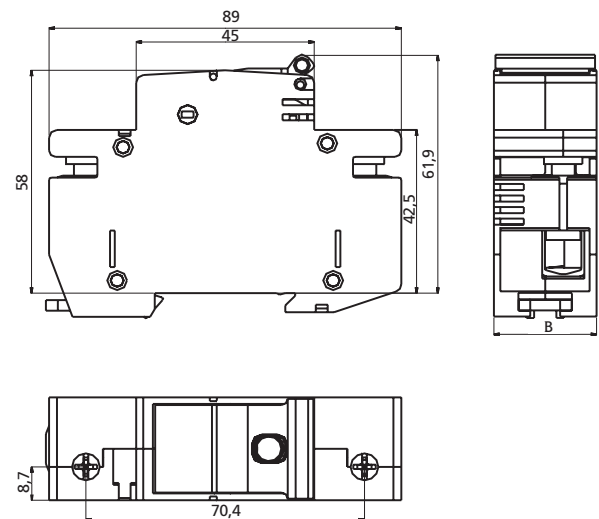


type	B [mm]
1p	17,5
1p+N	35
2p	35
3p	52,5
3p+N	70

Switch - disconnecter - fuse STVD02

Technical data

Number of poles	1p, 1p+N, 2p, 3p, 3p+N
Rated voltage	230/400 V a.c., 110 V (2p) d.c.
Rated current	63 A
Rated breaking capacity	50 kA
Rated insulation voltage	400 V
Rated impulse resistance voltage	6000 V
Category of use according to DIN VDE 0638	AC 22(63 A), AC 23(35 A), DC 22 (63 A)
Category of use according to DIN E 60 947-3	AC-22A (63A/400V AC), AC-23A (35A/400V AC), DC-22B (63A/110V DC)
Mechanical life	8.500 cycles
Electrical life	1.500 cycles
Temperature of environment	-5°C ... +40°C
Air humidity	90%
Degree of protection	IP 00 according to DIN 40 050
Standards	IEC/EN 60947-1 IEC/EN 60947-3 DIN EN 60947-1 VDE 0660-100 DIN EN 60947-3 VDE 0660-107 IEC 60269-1 Ed. 4.1 2009-07 IEC 60269-3 Ed. 4.0 2010-05
Terminal capacity	1,5 - 35mm ²
Possibility of sealing	in ON or OFF position



type	B [mm]
1p	26,8
1p+N	53,6
2p	53,6
3p	80,4
3p+N	107,2