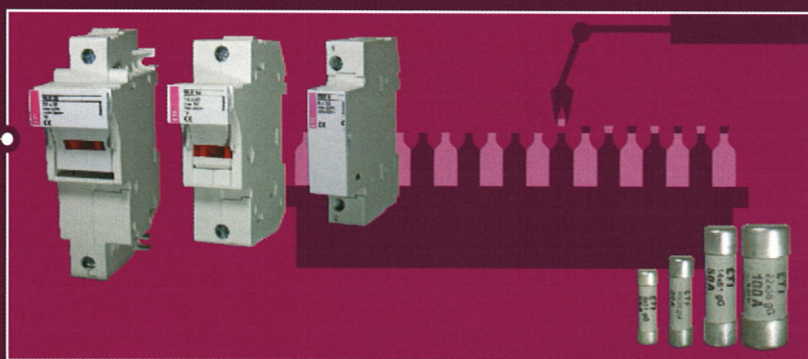


INDUSTRIAL INSTALLATIONS

High-quality protection of installations and devices in industry is ensured by wide selection of fuse-links and circuit breakers. Particularly important is the wide range of NV/NH fuse-links and switchgear combinations, i.e. fuse blocks and switch disconnectors. We also offer MCB's and power circuit breakers ETIBREAK. And not to forget ETICON contactors, plug-in outfit and line-up terminals SPOJ and overvoltage protection devices ETITEC. As well we can not provide solutions without switch disconnectors ETISWITCH and actuators and indicators ETISIG. The products are internationally certified and carry several quality marks.



INDUSTRY

Fuse-disconnection units

2-pole

| I_n [A] | U_n [V] | Code No. | Weight [g] | Packaging [pcs] |
|--------------|--------------|-----------|---------------|--------------------|
| 6 | 400 | 002261006 | 135 | 6/54 |
| 10 | 400 | 002261007 | 135 | 6/54 |
| 13 | 400 | 002261009 | 135 | 6/54 |
| 16 | 400 | 002261008 | 135 | 6/54 |



3-pole

| I_n [A] | U_n [V] | Code No. | Weight [g] | Packaging [pcs] |
|--------------|--------------|-----------|---------------|--------------------|
| 6 | 400 | 002261011 | 203 | 4/36 |
| 10 | 400 | 002261012 | 203 | 4/36 |
| 13 | 400 | 002261014 | 203 | 4/36 |
| 16 | 400 | 002261013 | 203 | 4/36 |



3-pole + N

| I_n [A] | U_n [V] | Code No. | Weight [g] | Packaging [pcs] |
|--------------|--------------|-----------|---------------|--------------------|
| 6 | 400 | 002261021 | 270 | 3/27 |
| 10 | 400 | 002261022 | 270 | 3/27 |
| 13 | 400 | 002261024 | 270 | 3/27 |
| 16 | 400 | 002261023 | 270 | 3/27 |

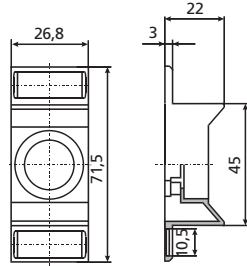
Accessories for fuse-switch disconnecter VLD01

Holder

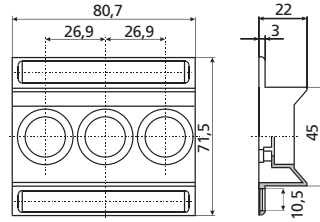
| Accessories | Code No. | Weight [g] | Packaging [pcs] |
|-------------|-----------|---------------|--------------------|
| holder/2-6A | 002261028 | 6 | 15/600 |
| holder/10A | 002261029 | 6 | 15/600 |
| holder/13A | 002261027 | 6 | 15/600 |
| holder/16A | 002261030 | 6 | 15/600 |



Protection cover



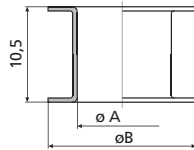
D01, D02



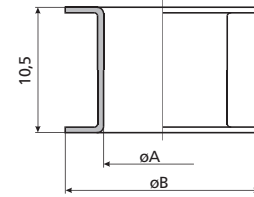
D01/3, D02/3

Gauge piece

| V D01 for fuse base E 14 | | |
|--------------------------|-----------------|-----------------|
| I_n [A] | dimension | |
| | $\varnothing A$ | $\varnothing B$ |
| 2 | 7,9 | 12 |
| 4 | 7,9 | 12 |
| 6 | 7,9 | 12 |
| 10 | 9,1 | 12 |

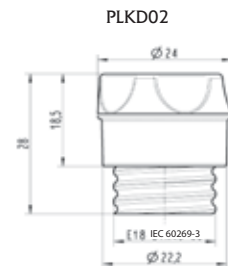
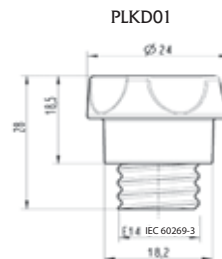
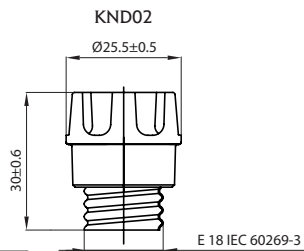
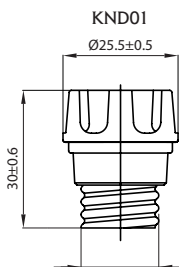


| V D02 for fuse base E 18 | | |
|--------------------------|-----------------|-----------------|
| I_n [A] | dimension | |
| | $\varnothing A$ | $\varnothing B$ |
| 2* | 7,9 | 16,6 |
| 4* | 7,9 | 16,6 |
| 6* | 7,9 | 16,6 |
| 10* | 9,1 | 16,6 |
| 16* | 10,3 | 16,6 |
| 20 | 11,5 | 16,6 |
| 25 | 12,7 | 16,6 |
| 35 | 13,9 | 16,6 |
| 50 | 15,1 | 16,6 |



*For using fuse-links D01 and fuse bases D02.

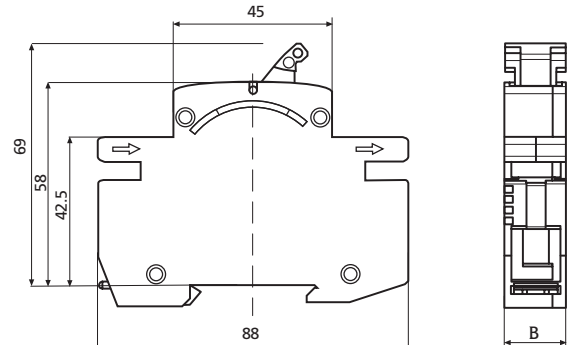
Fuse carrier D0



Fuse - switch disconnecter VLD01

Technical data:

| | |
|-----------------------|--|
| Rated voltage U_n | 230 V, 230/400 V, 400 V a.c. |
| Rated current I_n | 2-6 A, 10 A, 13 A, 16 A |
| Rated frequency f_n | 45-62 Hz |
| Utilization category | AC-22 A |
| Mechanical life | 10.000 cycles |
| Electrical life | 1500 cycles |
| Poles | 1p, 1p+N, 2p, 3p, 3p+N |
| Standards | IEC/EN 60947-1 IEC/EN 60947-3 DIN EN 60947-1 VDE 0660-100 DIN EN 60947-3 VDE 0660-107 IEC 60269-1 Ed. 4.1 2009-07 IEC 60269-3 Ed. 4.0 2010-05 |
| Terminal capacity | 1,5 -25mm ² |

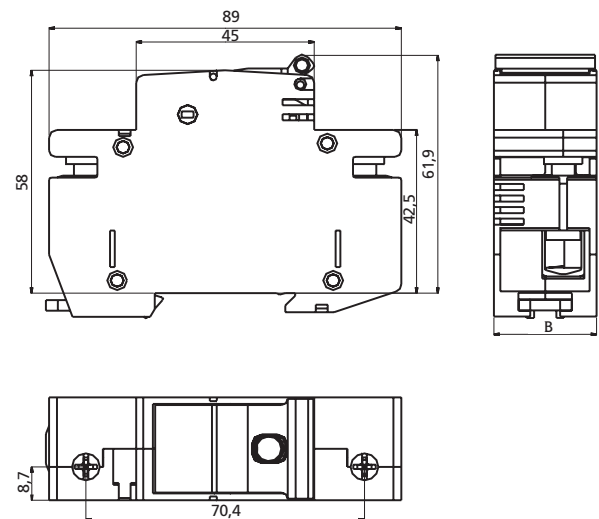


| type | B [mm] |
|------|--------|
| 1p | 17,5 |
| 1p+N | 35 |
| 2p | 35 |
| 3p | 52,5 |
| 3p+N | 70 |

Switch - disconnecter - fuse STVD02

Technical data

| | |
|---|--|
| Number of poles | 1p, 1p+N, 2p, 3p, 3p+N |
| Rated voltage | 230/400 V a.c., 110 V (2p) d.c. |
| Rated current | 63 A |
| Rated breaking capacity | 50 kA |
| Rated insulation voltage | 400 V |
| Rated impulse resistance voltage | 6000 V |
| Category of use according to DIN VDE 0638 | AC 22(63 A), AC 23(35 A), DC 22 (63 A) |
| Category of use according to DIN E 60 947-3 | AC-22A (63A/400V AC), AC-23A (35A/400V AC), DC-22B (63A/110V DC) |
| Mechanical life | 8.500 cycles |
| Electrical life | 1.500 cycles |
| Temperature of environment | -5°C ... +40°C |
| Air humidity | 90% |
| Degree of protection | IP 00 according to DIN 40 050 |
| Standards | IEC/EN 60947-1 IEC/EN 60947-3 DIN EN 60947-1 VDE 0660-100 DIN EN 60947-3 VDE 0660-107 IEC 60269-1 Ed. 4.1 2009-07 IEC 60269-3 Ed. 4.0 2010-05 |
| Terminal capacity | 1,5 - 35mm ² |
| Possibility of sealing | in ON or OFF position |



| type | B [mm] |
|------|--------|
| 1p | 26,8 |
| 1p+N | 53,6 |
| 2p | 53,6 |
| 3p | 80,4 |
| 3p+N | 107,2 |