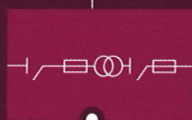
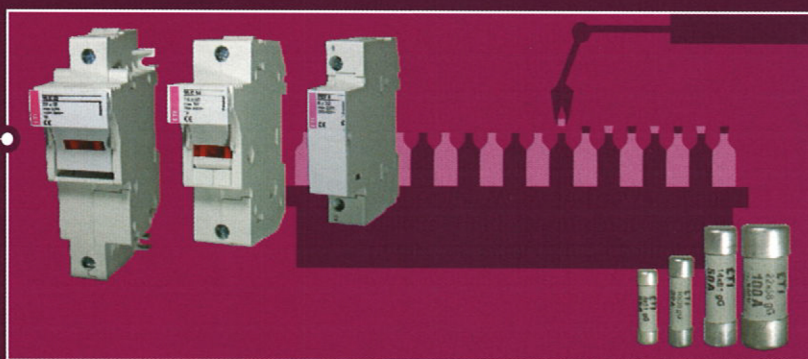


INDUSTRIAL INSTALLATIONS

High-quality protection of installations and devices in industry is ensured by wide selection of fuse-links and circuit breakers. Particularly important is the wide range of NV/NH fuse-links and switchgear combinations, i.e. fuse blocks and switch disconnectors. We also offer MCB's and power circuit breakers ETIBREAK. And not to forget ETICON contactors, plug-in outfit and line-up terminals SPOJ and overvoltage protection devices ETITEC. As well we can not provide solutions without switch disconnectors ETISWITCH and actuators and indicators ETISIG. The products are internationally certified and carry several quality marks.



INDUSTRY

Gauge piece

V D01 for fuse base E 14

I_n [A]	Colour	Code No.	Weight [g]	Packaging [pcs]
2	pink	002241001	1	50/500
4	brown	002241002	1	50/500
6	green	002241003	1	50/500
10	red	002241004	1	50/500



V D02 for fuse base E 18

I_n [A]	Colour	Code No.	Weight [g]	Packaging [pcs]
2*	pink	002243001	1	50/500
4*	brown	002243002	1	50/500
6*	green	002243003	1	50/500
10*	red	002243004	1	50/500
16*	grey	002243005	1	50/500
20	blue	002242001	1	50/500
25	yellow	002242002	1	50/500
35	black	002242003	1	50/500
50	white	002242004	1	50/500



* For using fuse-links D01 and fuse bases D02.

Gauge piece key

Code No.	Weight [g]	Packaging [pcs]
002241000	17	20/120



Fuse carrier D0

Fuse carrier D0

Type	Code No.	Screw	Weight [g]	Packaging [pcs]
KN D01	002231003	E 14	14	20/500
KN D02	002232003	E 18	17	20/500

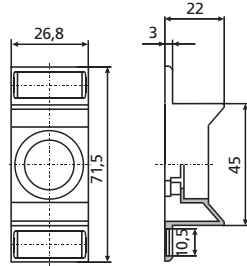


Fuse carrier D0 - plastic

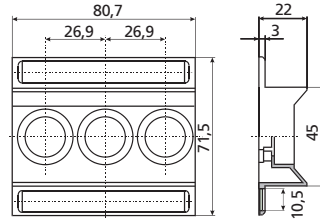
Type	Code No.	Screw	Weight [g]	Packaging [pcs]
PLK D01	002231008	E 14	9	10/500
PLK D02	002232008	E 18	11	10/500



Protection cover



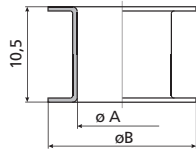
D01, D02



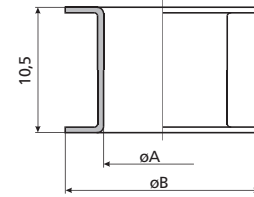
D01/3, D02/3

Gauge piece

V D01 for fuse base E 14		
I_n [A]	dimension	
	$\varnothing A$	$\varnothing B$
2	7,9	12
4	7,9	12
6	7,9	12
10	9,1	12



V D02 for fuse base E 18		
I_n [A]	dimension	
	$\varnothing A$	$\varnothing B$
2*	7,9	16,6
4*	7,9	16,6
6*	7,9	16,6
10*	9,1	16,6
16*	10,3	16,6
20	11,5	16,6
25	12,7	16,6
35	13,9	16,6
50	15,1	16,6



*For using fuse-links D01 and fuse bases D02.

Fuse carrier D0

