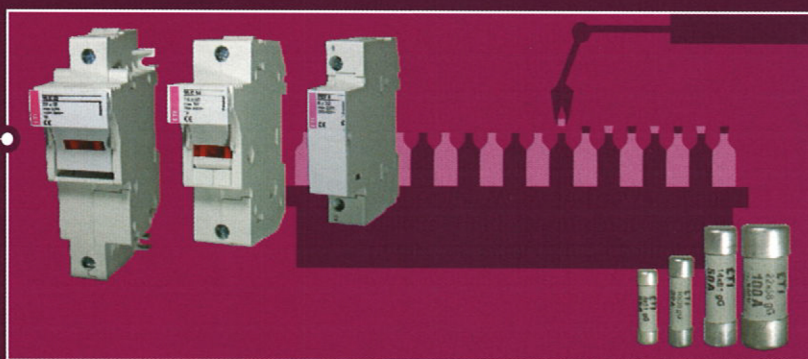


INDUSTRIAL INSTALLATIONS

High-quality protection of installations and devices in industry is ensured by wide selection of fuse-links and circuit breakers. Particularly important is the wide range of NV/NH fuse-links and switchgear combinations, i.e. fuse blocks and switch disconnectors. We also offer MCB's and power circuit breakers ETIBREAK. And not to forget ETICON contactors, plug-in outfit and line-up terminals SPOJ and overvoltage protection devices ETITEC. As well we can not provide solutions without switch disconnectors ETISWITCH and actuators and indicators ETISIG. The products are internationally certified and carry several quality marks.



INDUSTRY

Fuse bases

Advantages of plastic fuse base PFB D0

→ Compact housing design without additional covers – IP 20 protection class, faster assembling

→ All parts are made of firestop material (GW 960 °C)

→ Two position snapper - enables easy replacement



→ More grip area for screwing caps

→ Front print – product data visible after installation in the cabinet

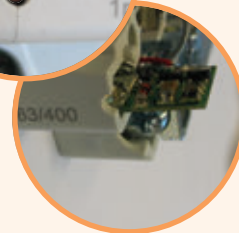


→ Modular design - availability of assembling multi-pole versions on construction site



→ LED indication when fuse link operates - working also in case of open circuit at minimal wire capacitance

→ LED indication flashes when a fuse is blown



→ Double input terminal - availability of connecting wire and isolated Busbar

→ Contact material Cu - lower temperature rise, very lower power dissipation

New! LED Version

Ceramic fuse base

Rated current
16, 63 A

The fuse bases D0 are planned to be built into distribution boxes in domestic and public installations. Total security against parts under voltage is achieved by installing D0 fuse bases into domestic or industrial distribution boards. Ceramic fuse-bases are tested and certified according to IEC 60269-3-1, DIN EN 60269-1, DIN EN 60269-3 and DIN VDE 0636-301.

Advantages

- modular construction
- smaller weight and smaller height (66 mm) provide installation into the flush-mounting distribution boxes, the depth of which is 80 mm only
- by the use of gauge-piece key it is possible to change the gauge rings under voltage
- the possibility of simple substitution of base D0 1 with D0 2

1-pole fuse base D0

Type	I _n [A]	Code No.	Screw	With protection cover	Without protection cover	Click-on mounting	Screw mounting	Weight [g]	Packaging [pcs]
D01N - K	16	002221011	E14	0		X		68	15/300
D01V - K	16	002221012	E14	0			X	66	15/300
D02N - K	63	002222011	E18	0		X		87	15/120
D02V - K	63	002222012	E18	0			X	80	15/120
D02N M5 - K	63	002222016	E18	0		X		82	15/120
D02V M5 - K	63	002222015	E18	0			X	80	15/120
D01N	16	002221001	E14		0	X		56	15/150
D01V	16	002221002	E14		0		X	59	15/150
D02N	63	002222001	E18		0	X		80	60/180
D02V	63	002222002	E18		0		X	77	60/180
D02N M5	63	002222006	E18		0	X		75	60/180
D02V M5	63	002222005	E18		0		X	72	60/180



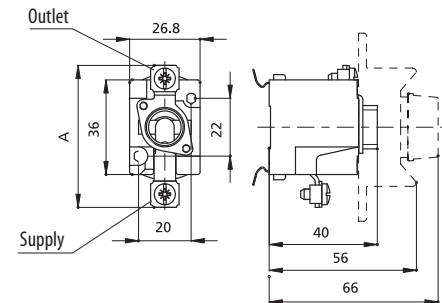
Ceramic fuse base

Technical data

Rated voltage U_n	400 V AC
Rated current I_n	D01 16 A, D02 63 A
Cross-section of connecting lead	D01 1 - 4 mm ² D02 1,5 - 25 mm ²
Connection clamp	with screw +- PZ
Standards	IEC 60269, EN 60269, DIN VDE 0636, SIST EN 60269

1-pole fuse base D0

type	connections		cross-section of connecting lead [mm ²]	dimension A [mm]
	outlet	supply		
D01N - K			1,5 - 4	53
D01V - K			1,5 - 4	53
D02N - K			2,5 - 25	57
D02V - K			2,5 - 25	57
D02N M5 - K			2,5 - 25	57
D02V M5 - K			2,5 - 25	57
D01N			1,5 - 4	53
D01V			1,5 - 4	53
D02N			2,5 - 25	57
D02V			2,5 - 25	57
D02N M5			2,5 - 25	57
D02V M5			2,5 - 25	57


3-pole fuse base D0

type	connections		cross-section of connecting lead [mm ²]	dimension A [mm]
	outlet	supply		
D01N/3 - K			1,5 - 4	53
D01V/3 - K			1,5 - 4	53
D02N/3 - K			2,5 - 25	57
D02V/3 - K			2,5 - 25	57
D02N/3 M5 - K			2,5 - 25	57
D02V/3 M5 - K			2,5 - 25	57
D01N/3			1,5 - 4	53
D01V/3			1,5 - 4	53
D02N/3			2,5 - 25	57
D02V/3			2,5 - 25	57
D02N/3 M5			2,5 - 25	57
D02V/3 M5			2,5 - 25	57

