



SKN0029/10 3P



SKN0034/10 3P

SKN type

Section rails 10 mm² (normal) 63A

Type	Additional description	Code No.	Cross section [mm ²]	Length [m]	Weight [g]	Packaging [pcs]	For use with
SKN0021/10	10mm ² , 1p+N, 12 mod.	002921150	10	0,216	203	10	ETIMAT1N, KZS1M
SKN0029/10 3P	10mm ² , 3p+N, 12 mod.	002921154	10	0,216	292	10	
SKN0032/10	10mm ² , 1p+N, 12 mod.	002921155	10	0,21	160	10	EPI2+10xETIMAT1N
SKN0034/10 3P	10mm ² , 3p+N, 14 mod.	002921156	10	0,252	378	10	EPI4+10xETIMAT1N

Din rail distribution blocks EDB



EDB-407

Construction

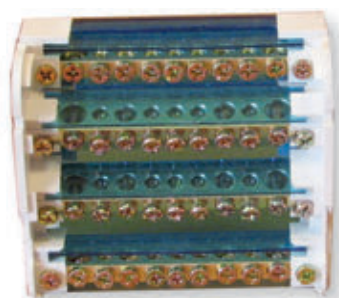
- Brass screw terminal blocks double-deck
- Housing made of self extinguishing material
- Cover and separating made of polycarbonate

Application

Proper and transparent connecting cables in low voltage distribution boards

Advantages

- TH35 din rail mounted or on a flat surface
- Safe and easy installation
- Transparent cover
- 2 or 4 pole model
- Self extinguishing material
- Possibility of connecting wires with ferrules or without



EDB-411

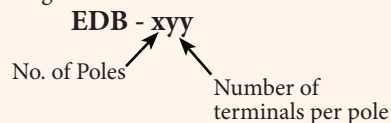


EDB-215

Distribution blocks EDB

Type	Code No.	Number of terminals	I _n [A]	Dimensions L x W x H [mm]	Weight [kg]	Packaging
2 - poles						
EDB-207	001102300	2 x (5 x Ø 5,3 + 2 x Ø 7,5)	125A	65 x 42 x 50	0,14	1/100
EDB-211	001102301	2 x (7x Ø 5,3 + 2 x Ø 7,5+ 2xØ 9)	125A	100 x 42 x 50	0,18	1/100
EDB-215	001102302	2 x (11x Ø 5,3 + 2 x Ø 7,5+ 2 x Ø 9)	125A	133 x 42 x 50	0,22	1/50
4 - poles						
EDB-407	001102303	4 x (5 x Ø 5,3 + 2 x Ø 7,5)	125A	65 x 88 x 50	0,24	1/100
EDB-411	001102304	4 x (7 x Ø 5,3 + 2 x Ø 7,5+ 2 x Ø 9)	125A	100 x 88 x 50	0,34	1/50
EDB-415	001102305	4 x (11 x Ø 5,3 + 2 x Ø 7,5+ 2 x Ø 9)	125A	133 x 88 x 50	0,46	1/50

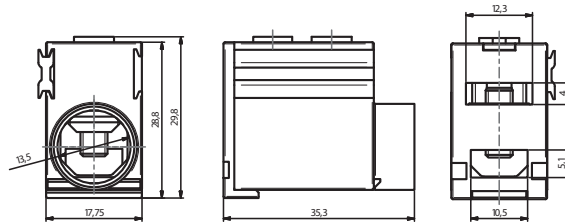
Ordering:



Accessories

Terminal for protective conductors

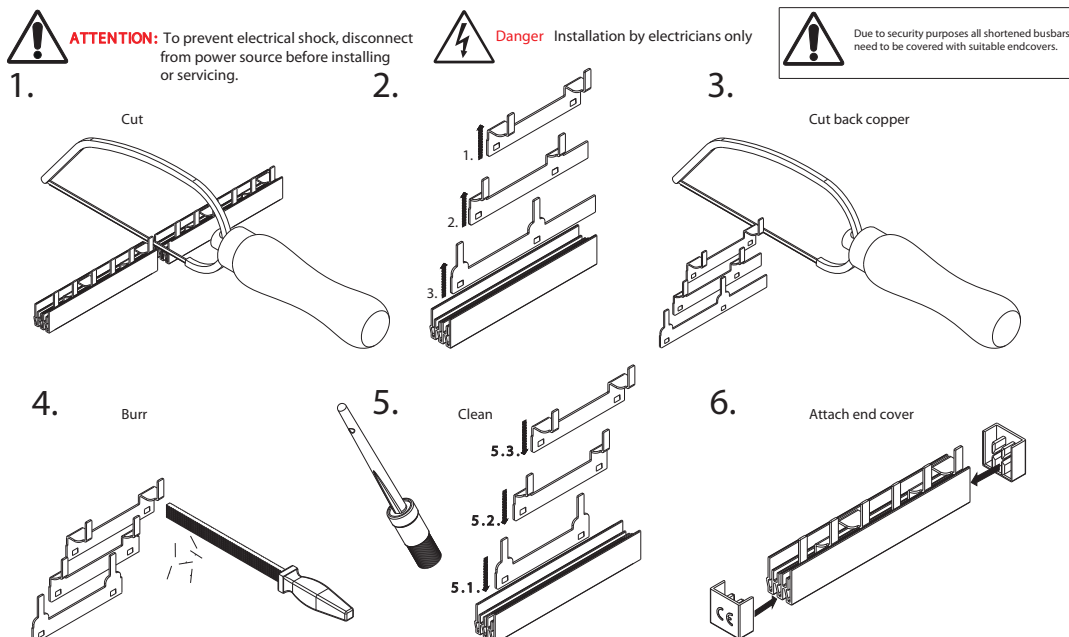
type	length [m]	supply [mm ²]	outlet [mm ²]
2/6	0,056	2 x 22	6 x 14
2/8	0,086	2 x 22	8 x 14
2/12	0,092	2 x 22	12 x 14
2/18	0,128	2 x 22	18 x 14

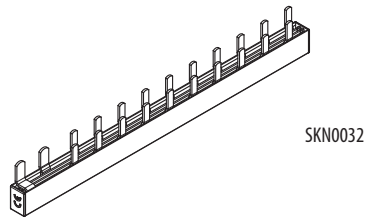
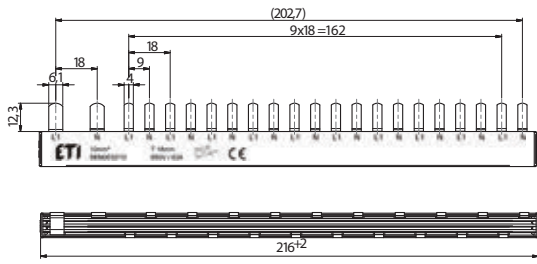


Technical data - Section rails for ETIMAT P10

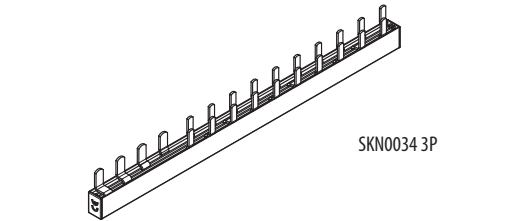
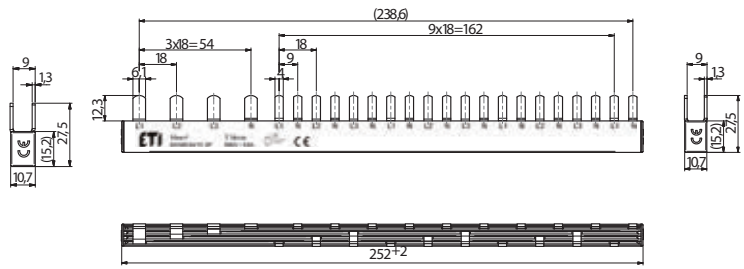
Cross section	10 mm ²	16 mm ²	25 mm ²
Feeding at beginning/ending			
Max. current I _s /Phase	63	80	100
Cross section of connection, mm ²	10	16	25
Feeding in the middle			
Max. current I _e /Phase	100	130	170
Cross section of connection, mm ²	25	35	2x25
Heat deflection temperature PVC	80°C flame resistant		
Comparative tracking index PVC	300V		
Standards	EN 60947-1:2007/ IEC 60947-1:2007		
Climate stability	DIN EN 60068		
Insulation coordination	Degree of pollution 2		
Electrical data			
Impulse voltage strength	≥4,5 kV		
Min. air distance	> 5,5 mm		
Min. creeping distance	> 5 mm		
Max. operating voltage	690 V AC/DC		
Protection class	IP20		
Short circuit rating	ICC 15kA NH 250A gL 500V		
Dielectric strenght	≥ 32 kV/mm		
Material			
	Material	Surface	
Busbar	Copper	plain	
Insulation	PVC lead-free	grey RAL 7035	
Endcover	moulded		

Ampacity at 35 °C ambient temperature depending of feeding point





SKN0032

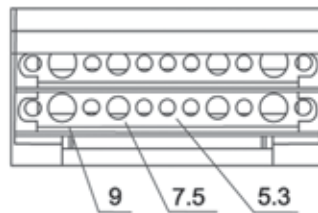
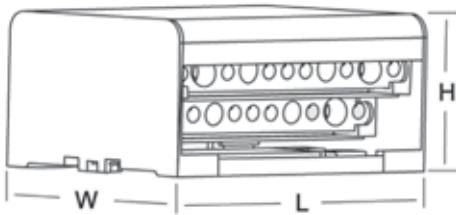


SKN0034 3P

Din rail distribution blocks EDB

Technical data:

Degree of protection	IP20 (with closed cover)
Short circuit withstand capability I_{cc}	20kA
Rated current	125A
In accordance with	EN 60947-1, EN 60947-7-1



Wire cross section by terminal size

Wire with ferrule	Wire without ferrule	Terminal size [mm]
1,5 - 6 mm ²	2,5 - 6 mm ²	Ø 5,3
6 - 16 mm ²	10 - 25 mm ²	Ø 7,5
10 - 16 mm ²	10 - 35 mm ²	Ø 9