

Distribution boards

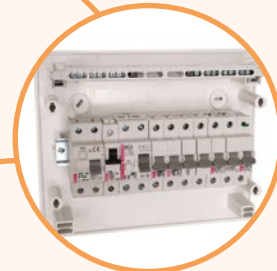
Home distribution board DIDO-E

Rated current 63 A	Rated voltage 400 V	Degree of protection IP 40
------------------------------	-------------------------------	--------------------------------------

→ N/PE terminals assure fast and simple wiring.



→ Included special marking stickers with symbols most common for home installations



→ Standard set includes:
 - metal DIN rail TH35 mounted in enclosure
 - PE/N terminals
 - mounting set with screws
 - marking stickers with symbols
 - cover for empty modular spaces



→ Possibility to add key lock to prevent unauthorized access.



→ Easy mounting system

Home distribution boards DIDO-E are available in two types: surface mounted and flush mounted boards, in one, two or three row design. Available with transparent or white doors. With lock set installation the board can be locked. Home distribution boards can easily be built in and already have a DIN rail installed for easier and quicker mounting of module devices. Terminal blocks for PE and N conductors are attached as standard for all distribution boards. Distribution boards correspond to condition of insulation protection and are in accordance with standard IEC60670-24.

Accessories DIDO-E ECG

Accessories DIDO ECG

Type	Description	Code No.	Weight [g]	Packaging [pcs]
PST-UNI	2x15 add-on terminal	001101051	100	1/25
MP-E	Modular cover -white (12 modules)	001101052	26	10/500
ECGBRP*	Connecting brackets - horizontal, plastic	001100274	100	1
ECGBRV*	Connecting brackets - vertical	001100200	50	1
ECMEDIA-2xSCH	Double schuko socket with holder	001100201	50	1
ECMEDIA-RHOLD	Device(router or modem) holder	001100202	50	1
ECG-L2K	Metal lock, including 2 keys	001100205	50	1
ECMEDIA-RJ	RJ45 connector holder, 12 ports	001100206	100	1
ECMEDIA-PART**	Partition with 1x integrated socket	001100250	100	1
ECMEDIA-SCH	Extra (2nd) socket 16A, 250V for Partition	001100251	50	1

*1 set includes 1 pair of brackets needed to mechanically connect two distribution boards

**In one partition can be mounted 2 schuko sockets, one is already included, second can be ordered separately.
Partition with 1x schuko socket is already included in ECG_COMBO distribution board



Flush mounted distribution boards with metal doors (IP40) DIDO ERP

Rated current 63 A	Rated voltage 400 V	Degree of protection IP 40
------------------------------	-------------------------------	--------------------------------------

- Flush mounted enclosure metal door (white)
- Colour white (RAL9016)
- IP protection IP40
- Equipped with TH rails, PE/N terminals, mounting brackets
- possibility to assemble with lock with key

- Enclosures are equipped with:
- DIN rails
 - Insulated terminals, neutral and ground
 - Modular covering mask
 - Instruction manual

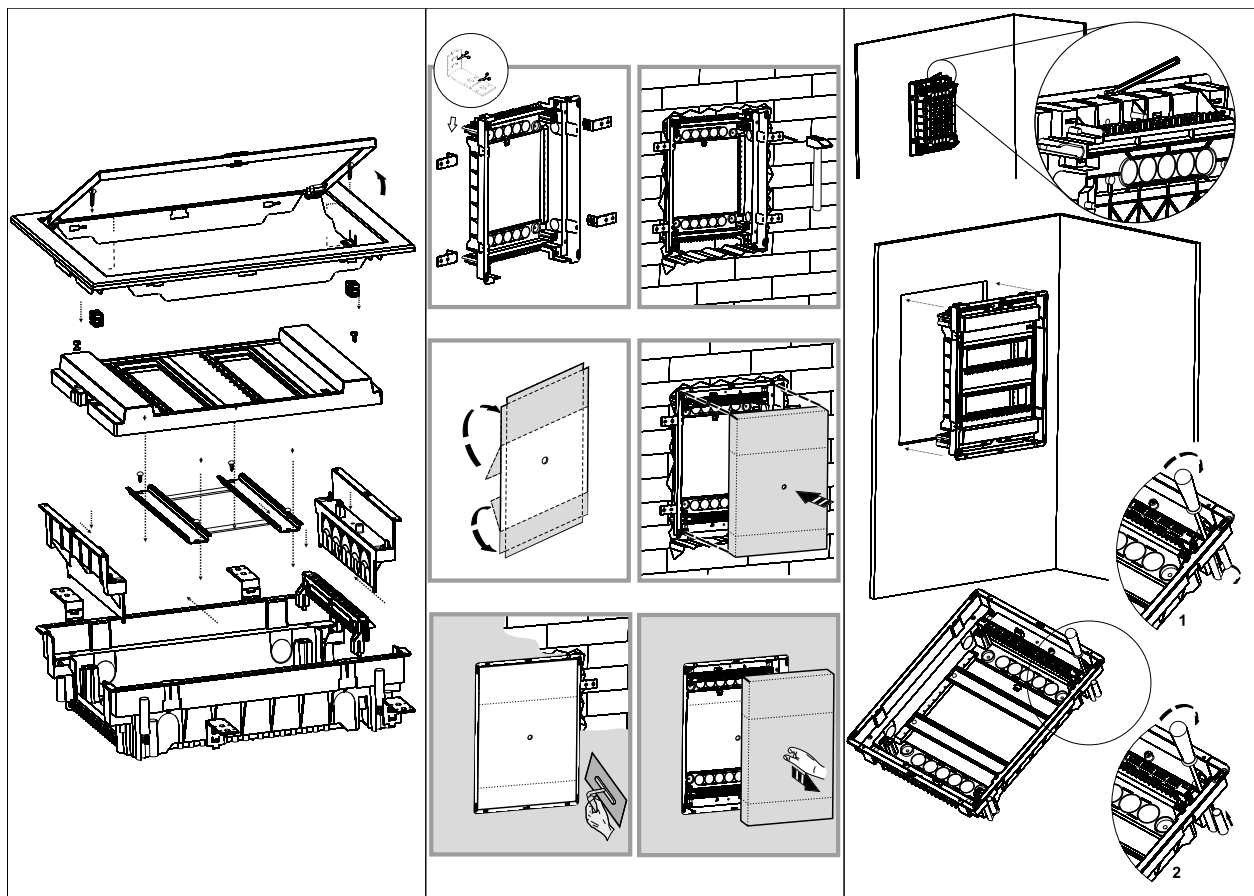
Type designation:



Flush mounted distribution board with metal doors

Type	Description	Code No.	Number of rows	Number of modules	Terminals PE/N	Weigh [kg]	Packaging [pcs]
ERP12-1	12 modules p/r	001101200	1	12	11/11	2,1	1
ERP12-2	12 modules p/r	001101202	2	24	1x24/2x11	3,3	1
ERP12-3	12 modules p/r	001101204	3	36	1x24/3x11	4,3	1
ERP12-4	12 modules p/r	001101206	4	48	1x24/4x11	5,2	1
ERP12-5	12 modules p/r	001101298	5	60	1x24/6x11	5,75	1
ERP12-6	12 modules p/r	001101299	6	72	1x24/6x11	6,65	1
ERP18-1	18 modules p/r	001101208	1	18	11/11	4	1
ERP18-2	18 modules p/r	001101210	2	36	1x24/2x11	5,5	1
ERP18-3	18 modules p/r	001101212	3	54	1x24/3x11	6,8	1
ERP18-4	18 modules p/r	001101214	4	72	1x24/4x11	8,2	1
ERP18-5	18 modules p/r	001101216	5	90	2x24/5x11	9,6	1
ERP18-6	18 modules p/r	001101218	6	108	2x24/6x11	11	1
ERP24-2	24 modules p/r	001101293	2	48	1x24/2x11	5,4	1
ERP24-3	24 modules p/r	001101294	3	72	1x24/3x11	7,1	1
ERP24-4	24 modules p/r	001101295	4	96	2x24/4x11	8,8	1
ERP24-5	24 modules p/r	001101296	5	120	3x24/4x11	10,4	1
ERP24-6	24 modules p/r	001101297	6	144	3x24/4x11	12,0	1





Flush mounted distribution boards with metal doors (IP40) DIDO ERP

Technical data	
Protection against mechanical impacts	IK08
Rated voltage	500V
Protection class	II
Standard	PN-EN 62208:2011

Not for hollow or wooden walls, flush mounted material conforms 650°C glow wire test only!

Assembly

- Standard set includes:
- metal DIN rail TH35
 - PE/N terminals
 - mounting set with screws
 - marking stickers with symbols
 - covers for mounting holes
 - cover for empty modular spaces

