

## Accessories DIDO-E ECG

Accessories DIDO ECG				
Type	Description	Code No.	Weight [g]	Packaging [pcs]
ECGBR*	Connecting brackets - horizontal	001101175	100	1
ECGBRV*	Connecting brackets - vertical	001100200	50	1
ECMEDIA-2xSCH	Double schuko socket with holder	001100201	50	1
ECMEDIA-RHOLD	Device(router or modem) holder	001100202	50	1
ECG-L2K	Metal lock, including 2 keys	001100205	50	1
ECMEDIA-RJ	RJ45 connector holder, 12 ports	001100206	100	1
ECMEDIA-PART**	Partition with 1x integrated socket	001100250	100	1
ECMEDIA-SCH	Extra (2nd) socket 16A, 250V for Partition	001100251	50	1

\*1 set includes 1 pair of brackets needed to mechanically connect two distribution boards

\*\*In one partition can be mounted 2 schuko sockets, one is already included, second can be ordered separately.  
Partition with 1x schuko socket is already included in ECG\_COMBO distribution board



## Flush mounted enclosures DIDO ERP

### Description

- Flush mounted enclosure metal door (white)
- IP protection IP40
- Protection against external mechanical impacts IK08
- Insulation voltage 500V
- Colour white (RAL9016)
- Equipped with TH rails, PE/N terminals
- possibility to assemble with lock with key
- standard: PN-EN6228:2011

### Flush mounted distribution board

Type	Code No.	Number of modules	Weight [kg]	Packaging [pcs]	PE Terminals	N Terminals
ERP24-2	001101293	2x24	6,15	1	1x24	2x11
ERP24-3	001101294	3x24	8	1	1x24	3x11
ERP24-4	001101295	4x24	9,8	1	2x24	4x11
ERP24-5	001101296	5x24	11,55	1	3x24	4x11
ERP24-6	001101297	6x24	13,3	1	3x24	4x11

### Accessories

Type	Code No.	Weight [g]	Packaging [pcs]
lock with key ELK-ERP	001101279	56	1/10
Catch ELP	001101280	12	1/10
N terminals ERP-N1 (11)	001101281	44	1/10
PE terminals ERP-PE2 (24)	001101284	9	1/10
Mounting plate for EB2S LA/ ED2S 160 3p ERP24-PM	001101287	345	1

Type designation:

**ERP24-X**

Number of modules in one row

Number of rows



ELK-ERP



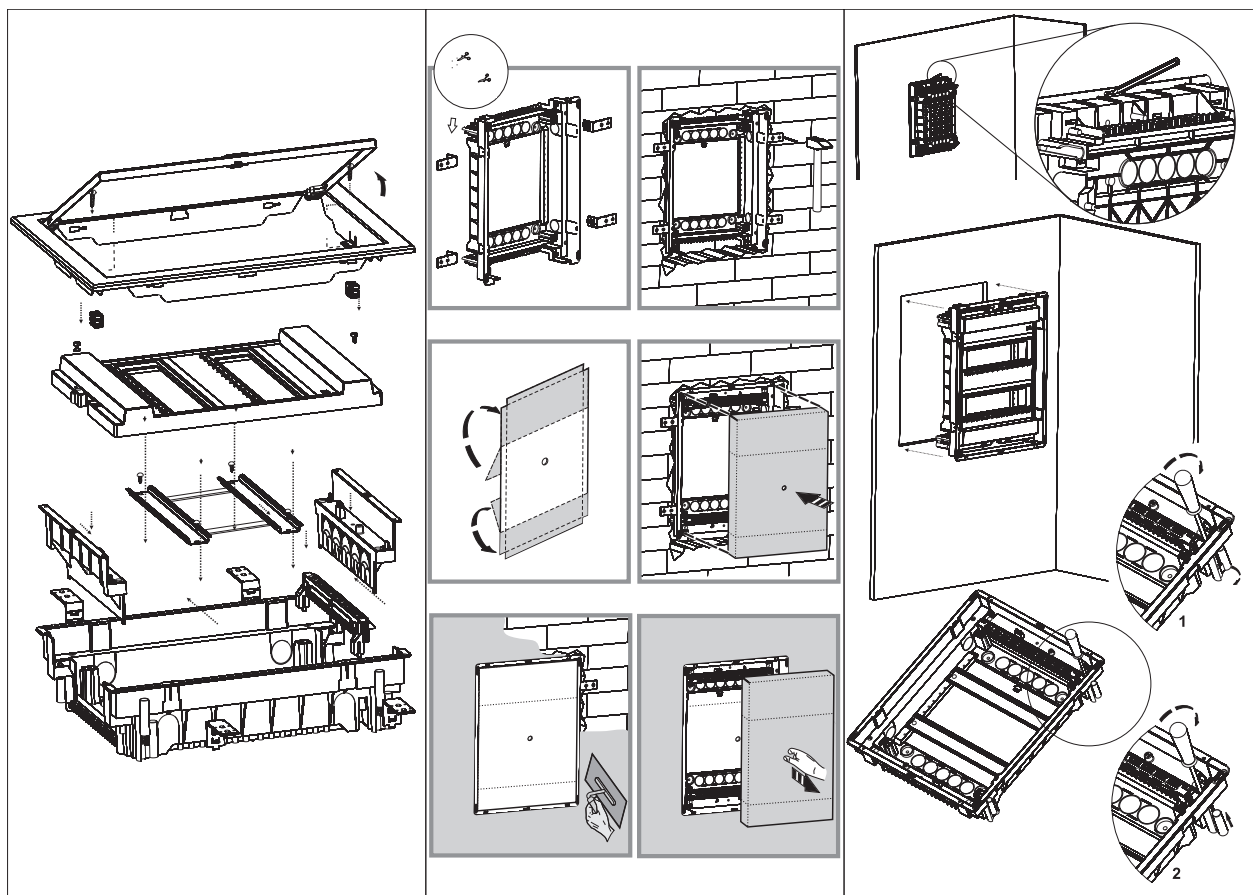
ELP



ERP-N1



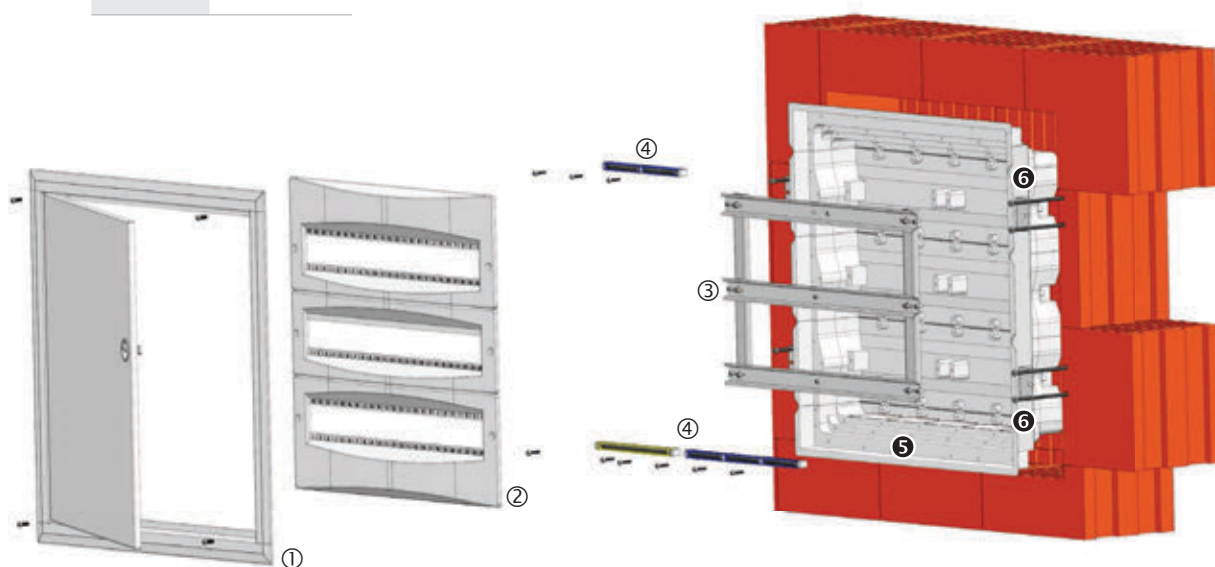
ERP-PE2



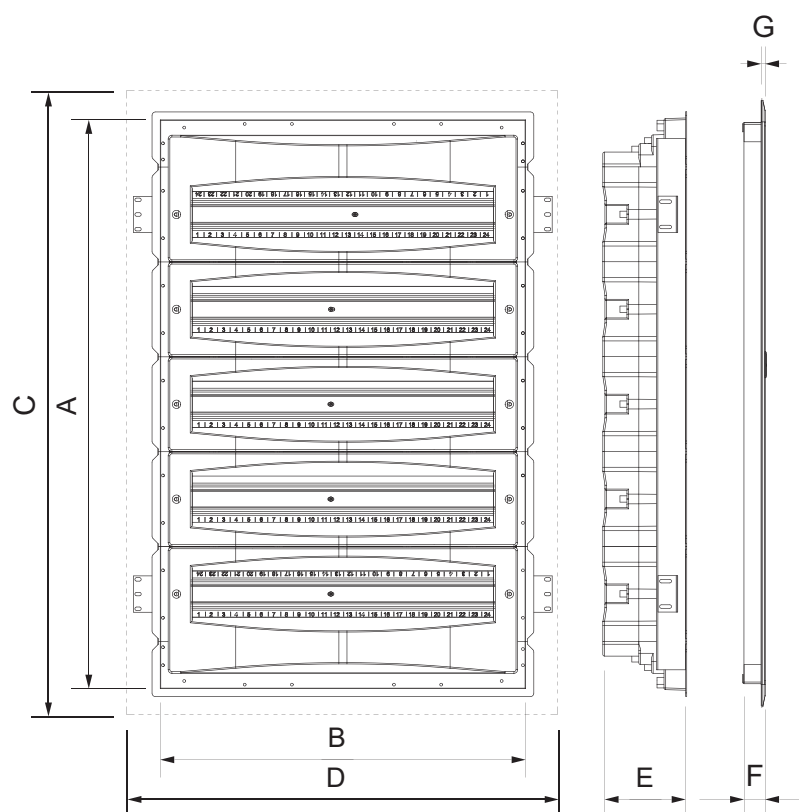
Flush mounted enclosures DIDO ERP

Glow wire test: 650°C

Part no.	Description
1	frame with doors
2	Plastic covers
3	TH set
4	PE/N terminals
5	bottom of enclosure
6	fixing elements



## Dimensions



	A [mm]	B [mm]	C [mm]	D [mm]	E [mm]	F [mm]	G [mm]
ERP24-2	408	523	465	575	120	30	5
ERP24-3	543	523	600	575	120	30	5
ERP24-4	678	523	735	575	120	30	5
ERP24-5	813	523	870	575	120	30	5
ERP24-6	948	523	1005	575	120	30	5

## Distribution boards DIDO ACT

DIDO ACT	
Material	ABS
Color	RAL9003
Door	styrene acrylonitrile
Color	Transparent & white
Glow wire test	650°C
Terminal holder	Self extinguish material (Glow wire test: 960°C)
Temperature	-25°C... +60°C
Rated voltage	AC400V
Standard	IEC 62208, IEC 60670-1, IEC60670-24
Halogen free	✓