

Distribution boards DIDO ACT

ACT distribution boards can be used in applications with wall mounted electrical installations, like containers, wooden houses. Blended cuttings on top and bottom of enclosure for entrance of various dimensions of installation channel.

Enclosures are completely assembled with all necessary parts, such as:

- DIN rail
- Insulated terminals, neutral and ground
- Covers for free space
- Needed installation accessories
- Instruction manual



Surface mounted distribution board - plastic door - transparent

Type	Code No.	Number of modules	Weight [g]	Packaging [pcs]	Rows
ACT12PT	001100240	12+2	1300	5	1
ACT24PT	001100241	24+4	1700	5	2
ACT36PT	001100242	36+6	2100	5	3

Surface mounted distribution board - plastic door - white

Type	Code No.	Number of modules	Weight [g]	Packaging [pcs]	Rows
ACT12PO	001100243	12+2	1300	5	1
ACT24PO	001100244	24+4	1700	5	2
ACT36PO	001100245	36+6	2100	5	3

Modular distribution board for use outside DIDO-ECH

Rated current **63 A** Rated voltage **400 V** Degree of protection **IP 65**



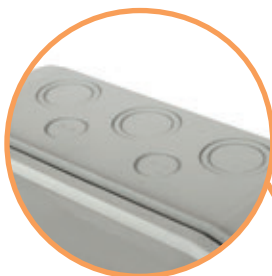
→ Left or right door opening



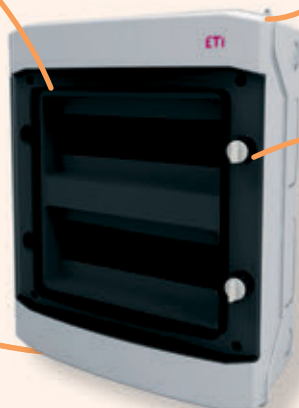
- Standard set includes:
- metal DIN rail TH35
 - PE/N terminals
 - mounting set with screws
 - marking stickers with symbols
 - covers for mounting holes
 - cover for empty modular spaces



→ Possible to seal enclosure, to prevent unauthorized access.

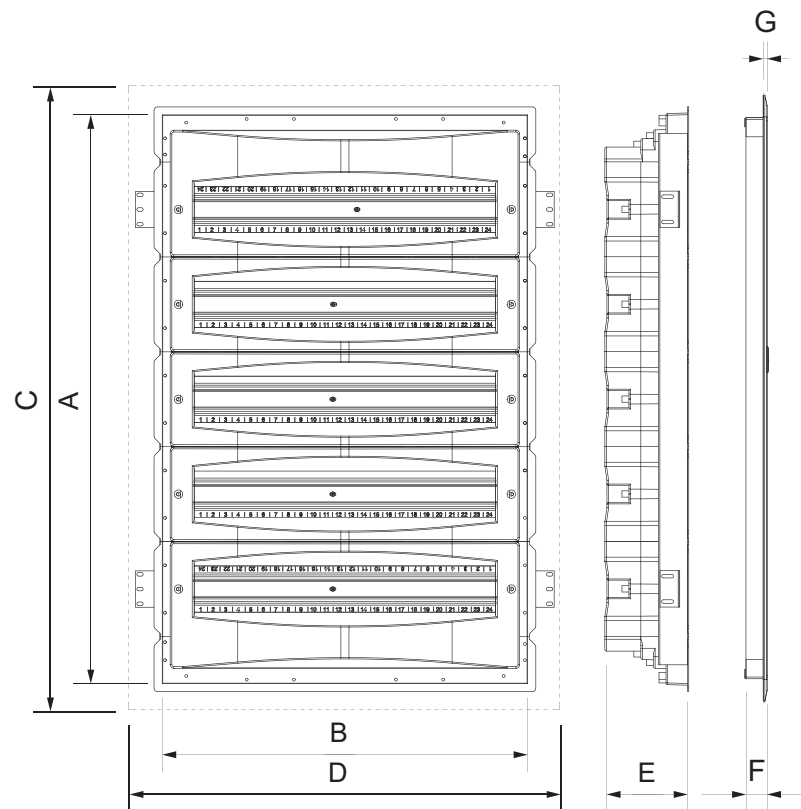


→ Prepared points for glands (cable entry)



→ Tight closing with rubber between door and housing provide IP65. Also possible to install key lock

Dimensions

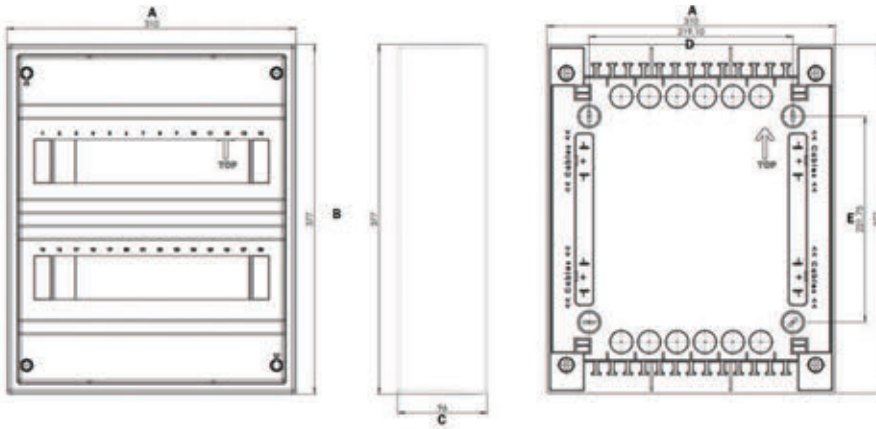


	A [mm]	B [mm]	C [mm]	D [mm]	E [mm]	F [mm]	G [mm]
ERP24-2	408	523	465	575	120	30	5
ERP24-3	543	523	600	575	120	30	5
ERP24-4	678	523	735	575	120	30	5
ERP24-5	813	523	870	575	120	30	5
ERP24-6	948	523	1005	575	120	30	5

Distribution boards DIDO ACT

DIDO ACT	
Material	ABS
Color	RAL9003
Door	styrene acrylonitrile
Color	Transparent & white
Glow wire test	650°C
Terminal holder	Self extinguish material (Glow wire test: 960°C)
Temperature	-25°C... +60°C
Rated voltage	AC400V
Standard	IEC 62208, IEC 60670-1, IEC60670-24
Halogen free	✓

Dimensions



	A [mm]	B [mm]	C [mm]	D [mm]	E [mm]	Max. allowed power losses when Max. number of devices are installed
ACT12	310	251	96	96	219	30W
ACT24	310	377	96	219	222	40W
ACT36	310	502	96	219	347	60W

Modular distribution board for use outside DIDO-ECH

Technical data

Degree of protection	IP 65
Insulation class	II
Colour	RAL 7035
Double insulation	
Standard	IEC 60670-1, IEC 60670-24
Installation temperature	-20° / +60°C
Glow wire test	650°C

Dimensions

type	Dimensions						Max. allowed power losses when Max. number of devices are installed Pde
	A	B	C	D	E	F	
ECH-4G	201 mm	128 mm	120 mm	-	78 mm	111 mm	10W
ECH-8G	201 mm	202 mm	120 mm	-	100 mm	140 mm	13W
ECH-12PT	259 mm	319 mm	144 mm	-	210 mm	130 mm	16W
ECH-24PT	384 mm	319 mm	144 mm	125 mm	210 mm	255 mm	24W
ECH-36PT	508 mm	319 mm	144 mm	125 mm	210 mm	380 mm	26W

Number of PE - N terminals:

4-G	2x4	4 PE / 4 N
8-G	2x8	8PE / 10 N
12-PT	2x10	10 PE / 10 N
24-PT	2x15	15 PE / 15 N
36-PT	2x15	15 PE / 15 N

