

ECG56(H)COMB03/1-I

ECG70(H)COMB04/1-I

ECG70(H)COMB02/3-I



**Flush mounted multimedia distribution board - perforated metal door, white**

Type	Code No.	Description	Weight [g]	Packaging [pcs]
ECG42HCOMB02/1-I	001100226	2 Media + 1 Modular row	3400	1
ECG56HCOMB03/1-I	001100227	3 Media + 1 Modular row	4100	1
ECG56HCOMB02/2-I	001100228	2 Media + 2 Modular rows	4100	1
ECG70HCOMB04/1-I	001100229	4 Media + 1 Modular row	4900	1
ECG70HCOMB03/2-I	001100230	3 Media + 2 Modular rows	4900	1
ECG70HCOMB02/3-I	001100231	2 Media + 3 Modular rows	5000	1

Conforms 850°C glow wire test according to IEC60670-24 for hollow wall installation

**Distribution boards for installation in hollow walls by IEC 60670-24 DIDO-E ECG\_H**

**Description**

DIDO ECG are flush-mounted compact distribution boxes. They are suitable for installation in homes, schools and commercial buildings.

Main characteristics:

- Class II, double insulated
- Cable entrance from top or bottom
- Device cover with opening for 12 modules per row + 2 blended (can be removed). Can be sealed
- Thin design, 88mm depth in wall and 7mm outside the wall.
- Color: White RAL 9003

Enclosures are completely assembled with all necessary parts, such as:

- DIN rail
- Insulated terminals, neutral and ground
- Covers for free space
- Needed installation accessories for concrete and hollow walls
- Instruction manual



**Flush mounted distribution board with metal door**

Type	Code No.	Number of modules	Weight [g]	Packaging [pcs]	Rows
ECG14H	001101160	12+2	2000	1/1	1
ECG28H	001101161	24+4	2500	1/1	2
ECG42H	001101162	36+6	3000	1/1	3
ECG56H	001101163	48+8	3500	1/1	4
ECG70H	001101169	60+10	5000	1/1	5

Conforms 850°C glow wire test according to IEC60670-24 for hollow wall installation

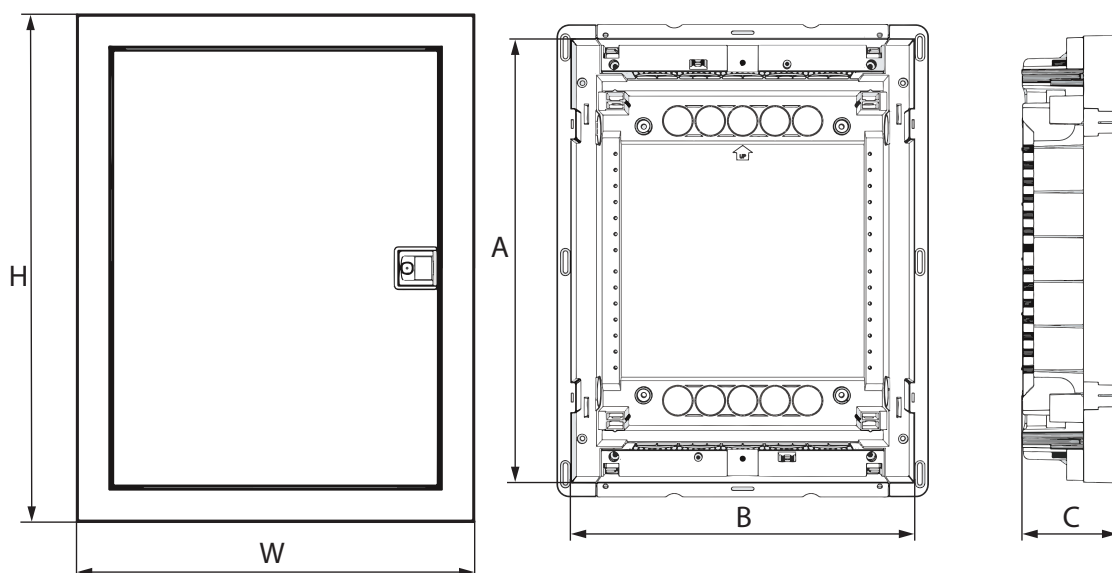
**Flush mounted multimedia distribution board - perforated metal door, white**

Type	Code No.	Number of mounting plates	Weight [g]	Packaging [pcs]
ECG14HMEDIA-I	001100130	1	2000	1
ECG28HMEDIA-I	001100131	2	2500	1
ECG42HMEDIA-I	001100132	3	3000	1
ECG56HMEDIA-I	001100133	4	3500	1
ECG70HMEDIA-I	001100134	5	5000	1

Conforms 850°C glow wire test according to IEC60670-24 for hollow wall installation

**Flush mounted distribution board**

type	Dimensions					Max. allowed power losses when Max. number of devices are installed Pde
	A	B	C	H	W	
ECG14	274 mm	306 mm	87 mm	317 mm	346 mm	31W
ECG28	399 mm	306 mm	87 mm	442 mm	346 mm	40W
ECG42	549 mm	306 mm	87 mm	592 mm	346 mm	50W
ECG56	673 mm	306 mm	87 mm	717 mm	346 mm	60W
ECG70	806 mm	317 mm	87 mm	842 mm	346 mm	60W



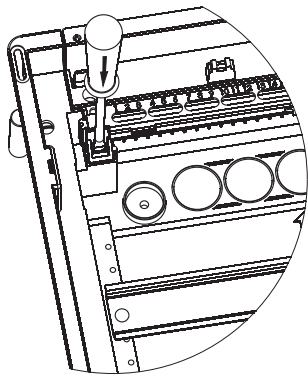
**Surface mounted distribution board - IP30**

type	Dimensions	Number of modules
EC 1+1	137 x 51 x 57	1 (+1)
EC 3+1	137 x 87 x 57	3 (+1)
EC 3+2	97 x 155 x 57	3 (+2)

ECG	
Material	Acrylonitrile butadiene styrene
Color	RAL9003
Door	Acrylonitrile butadiene styrene
Color	Transparent & white
Glow wire test	650°C
Terminal holder	Self extinguish material (Glow wire test: 960°C)
Temperature	-25°C ... +60°C
Rated voltage	AC400V
Standard	IEC60670
Halogen free	✓

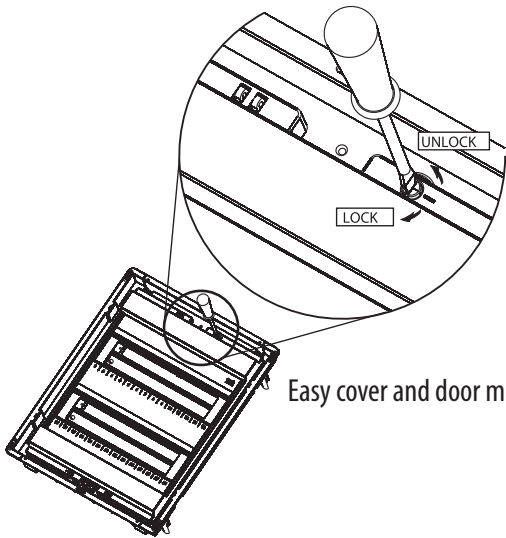
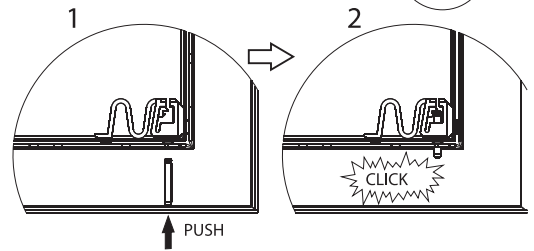
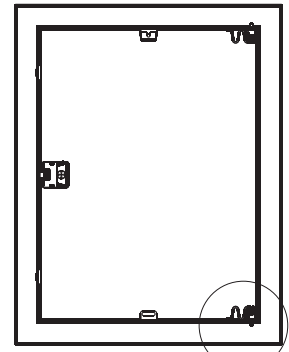
ECG_H	
Material	Acrylonitrile butadiene styrene
Color	RAL9003
Door	Metal
Color	white
Glow wire test	850°C
Terminal holder	Self extinguish material (Glow wire test: 960°C)
Temperature	-25°C ... +60°C
Rated voltage	AC400V
Standard	IEC 60670-1, IEC 60670-24
Halogen free	✓

Advantages

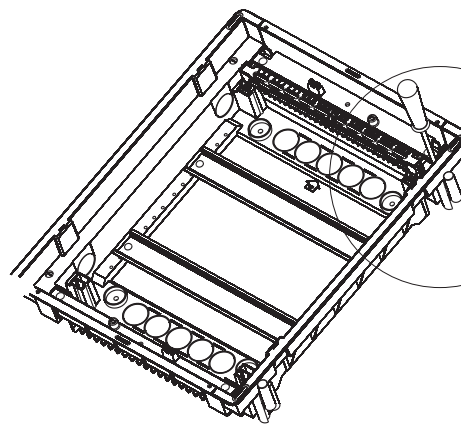


Easy terminal mounting

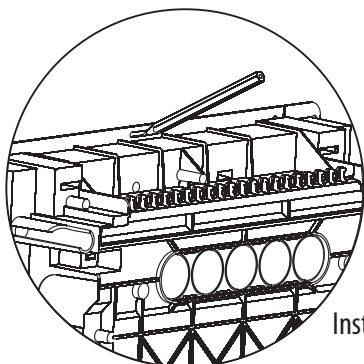
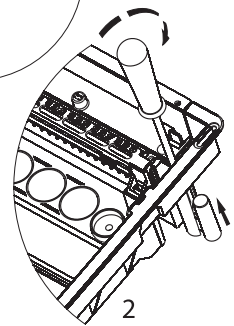
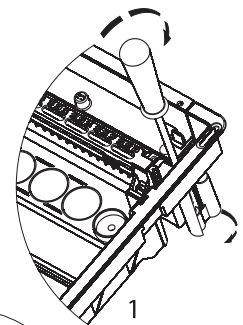
Left or right door mounting



Easy cover and door mounting



Holders for secure hollow wall installation



Installation marking slots for hollow walls