



>KOMPAS<
A NEW FORM

 **SCAME**
electrical solutions



>KOMPAS<

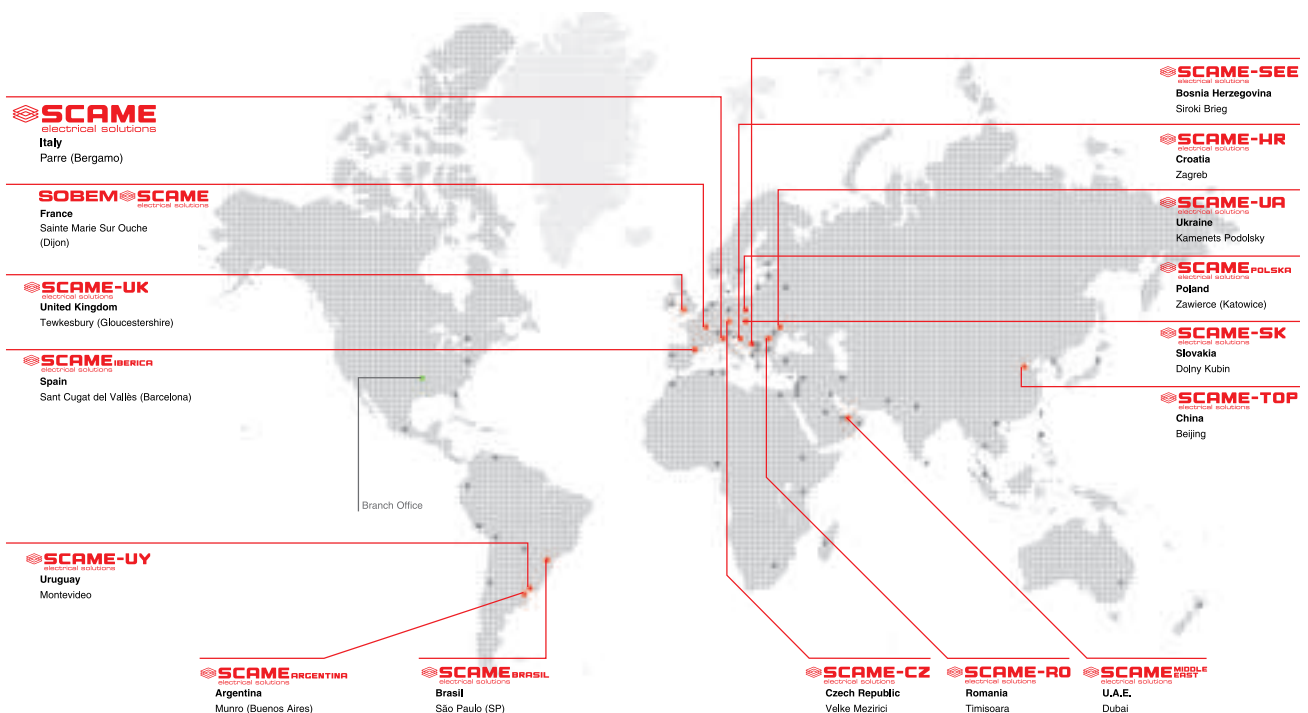


Kompas, a complete range of products with modern design and reliable technology, is highly valued among architects for the aesthetic opportunities offered by its colour combinations; the installers will verify its ease of installation and the end user will certainly enjoy this attractive and functional furnishing accessory.





Today, having over 40 years of rich manufacturing expertise, SCAME exports the Italian know-how worldwide, consolidating business relations with over 100 countries and with business partners in the five continents. The SCAME style appears in product design and technology as well as in the corporate philosophy, where respect for an excellence performance always comes first. The product range includes over 10,000 items, providing electrical solutions for civil and industrial applications. SCAME product range can be divided in 22 product families enabling solutions for any electrical requirement. Since 1993 all corporate processes comply with ISO 9001 standards, and all products meet the safety requirements of the international certifications bodies: BSI, IMQ, KEMA KEUR, UL, VDE, etc. Leafing through the over 600 pages of the general catalogue, printed in five languages, or surfing the corporate web site, the SCAME technology appears in all its evidence.



Leading the way since 1963.

Giovanni Scainelli founded SCAME in 1963 at Parre, in the Bergamo Province.



Where his dream of a business enterprise was put into action with a first production facility of insulated nails. A strong confidence in human resources and inclination for creativity led the company to constantly pursue innovation and to propose new products to the market, always featuring beautiful design and full performance reliability. Over the years, the original facilities became insufficient and the company started expanding, setting-up new factories, developing new equipments and adding new infrastructure facilities. Driven by Scainelli's desire to explore new opportunities, research has never ceased.

Within its "Total Quality" program, SCAME quality system has since long been recognised as fully complying with ISO 9001 standard. This acknowledgement represents the assurance of highest quality standards of Kompas wiring accessories, confirmed by a 12 years* guarantee extended by SCAME on Kompas products.



* 2 years electronic device



>KOMPAS<

The pleasure of Italian design,
the safety of Scame technology:
Kompas enters homes worldwide
with elegance and discretion.



Designed in Italy, for the houses of the world.

***A design
built on
experience.***

The Kompas design is appreciated for two reasons: its appealing appearance and convenient use. The soft lines and rounded profiles make Kompas an attractive article which harmoniously blends in with any furnishing context. From the technical point of view, the design ensures perfect ergonomics of the switches, with smooth and soundless movements. The sturdy structure and simple assembly make Kompas a winning choice for both installers and the end user.



>KOMPAS<

Elegant in the monochrome version,
original in the chromatic combinations.
Kompas always offers a pleasing yet
non-trivial solution.



BLACK PLATE / WHITE CONTROLS COMBINATION

WHITE



A lovely combination is not an accident.

*Classic
monochrome or
new combinations:
it's your choice.*

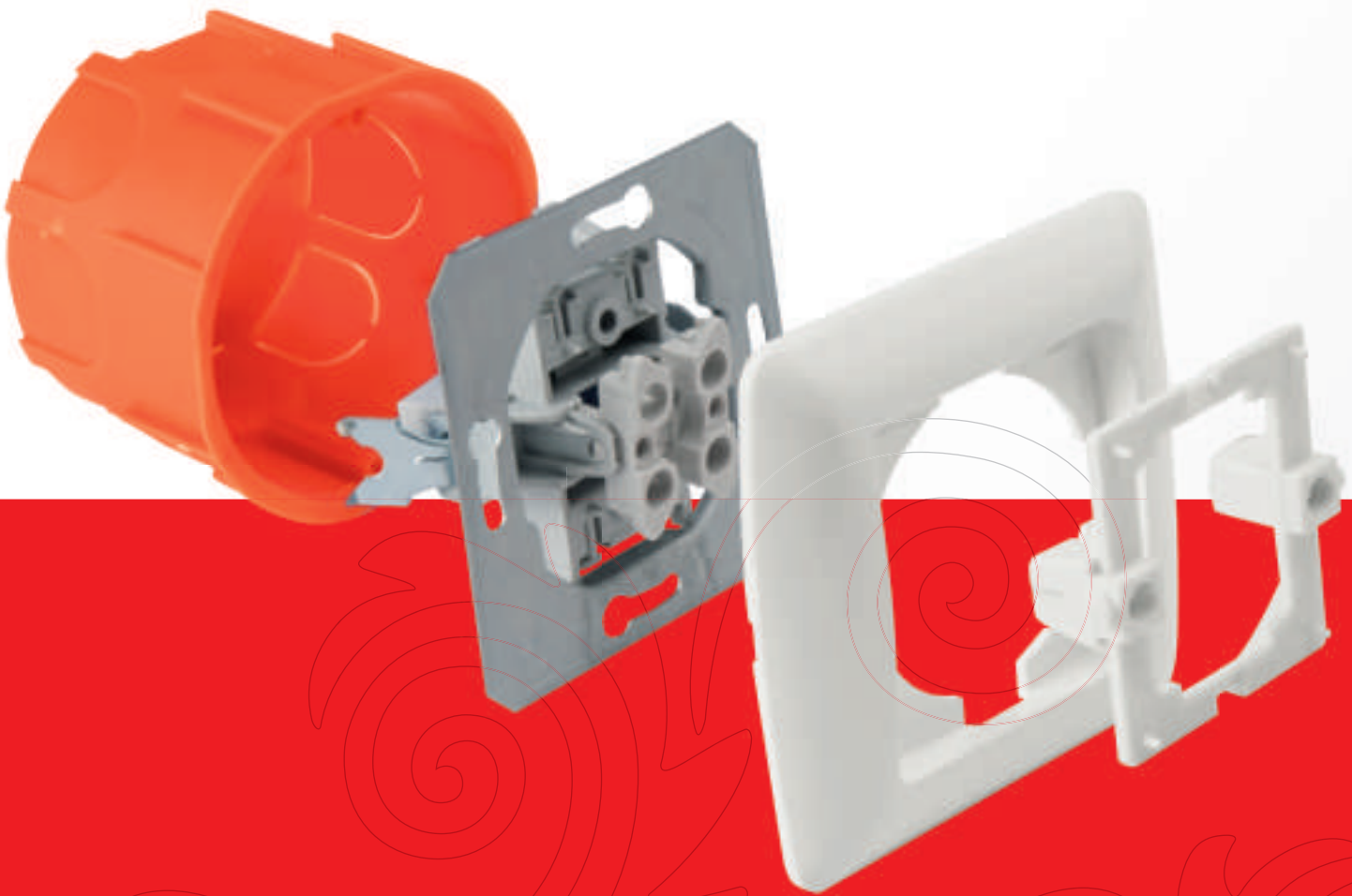
The three base colours allow you to meet every chromatic coordination need in a simple yet elegant manner, but Kompas also offers the possibility to combine frame and module colours to create new solutions which are surprisingly original and sophisticated. The possibility to use multiple elements arranged horizontally or vertically increases the creative opportunities for furnishing the ambient and allow ideal utilization of the space.

SILVER



>KOMPAS<

Quick installation, reliable use:
making technology simple is the
benefit of Scame's experience.

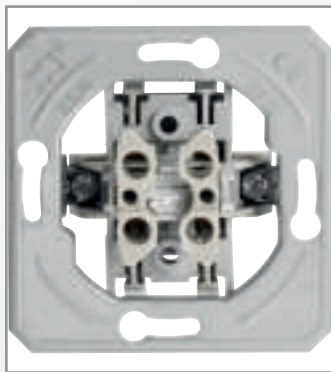


Easy to install. Reliable to use.



The quick-coupling contact makes wiring fast and safe.

The same contact can also house two wires with different diameters.



All the switches are supplied with clear identification of their technical specifications, impressed directly on the frame.



The system for fastening to the flush-mounting box ensures maximum tightness even with tiling.



Boxes can be assembled either horizontally or vertically.



SWITCHES

HOW TO READ THE TABLE



| with frontplate | without frontplate |
|-----------------|--------------------|
| ○ code white | ○ code white |
| | ● code silver |
| | ● code black |
| DESCRIPTION | |
| pack quantity | |

The first code indicates the white-coloured assembled product (device + plate).
All the items are also available without the plate in various colours.



.W for white



.S for silver



.B for black



Frontplates to page 16



| with frontplate | without frontplate |
|------------------------------|--------------------|
| ○ 133.1110 | ○ 133.1110.W |
| | ● 133.1110.S |
| | ● 133.1110.B |
| 1 GANG 16A-250V 1 WAY SWITCH | |
| 10/100 | |



| with frontplate | without frontplate |
|---|--------------------|
| ○ 133.1110L | ○ 133.1110L.W |
| | ● 133.1110L.S |
| | ● 133.1110L.B |
| 1 GANG 16A-250V 1-WAY SWITCH WITH LIGHT (*) | |
| 10/100 | |



| with frontplate | without frontplate |
|------------------------------|--------------------|
| ○ 133.1111 | ○ 133.1111.W |
| | ● 133.1111.S |
| | ● 133.1111.B |
| 2 GANG 16A-250V 1 WAY SWITCH | |
| 10/100 | |



| with frontplate | without frontplate |
|--------------------------------|--------------------|
| ○ 133.1115 | ○ 133.1115.W |
| | ● 133.1115.S |
| | ● 133.1115.B |
| 1 GANG 16A-250V 2 POLES SWITCH | |
| 10/100 | |



| with frontplate | without frontplate |
|------------------------------|--------------------|
| ○ 133.1120 | ○ 133.1120.W |
| | ● 133.1120.S |
| | ● 133.1120.B |
| 1 GANG 16A-250V 2 WAY SWITCH | |
| 10/100 | |



| with frontplate | without frontplate |
|------------------------------|--------------------|
| ○ 133.1121 | ○ 133.1121.W |
| | ● 133.1121.S |
| | ● 133.1121.B |
| 2 GANG 16A-250V 2 WAY SWITCH | |
| 10/100 | |



| with frontplate | without frontplate |
|-------------------------------------|--------------------|
| ○ 133.1130 | ○ 133.1130.W |
| | ● 133.1130.S |
| | ● 133.1130.B |
| 1 GANG 16A-250V INTERMEDIATE SWITCH | |
| 10/100 | |



| with frontplate | without frontplate |
|-----------------------------|--------------------|
| ○ 133.1140 | ○ 133.1140.W |
| | ● 133.1140.S |
| | ● 133.1140.B |
| 1 GANG 16A-250V PUSH BUTTON | |
| 10/100 | |



| with frontplate | without frontplate |
|--|--------------------|
| ○ 133.1140L | ○ 133.1140L.W |
| | ● 133.1140L.S |
| | ● 133.1140L.B |
| 1 GANG 16A-250V PUSH BUTTON WITH LIGHT (*) | |
| 10/100 | |



| with frontplate | without frontplate |
|--|--------------------|
| ○ 133.1140LL | ○ 133.1140LL.W |
| | ● 133.1140LL.S |
| | ● 133.1140LL.B |
| 1 GANG 16A-250V PUSH BUTTON WITH LIGHT LAMP SYMBOL (*) | |
| 10/100 | |



| with frontplate | without frontplate |
|---|--------------------|
| ○ 133.1140LB | ○ 133.1140LB.W |
| | ● 133.1140LB.S |
| | ● 133.1140LB.B |
| 1 GANG 16A-250V PUSH BUTTON WITH LIGHT BELL SYMBOL (*) | |
| 10/100 | |



| with frontplate | without frontplate |
|--|--------------------|
| ○ 133.1140LN | ○ 133.1140LN.W |
| | ● 133.1140LN.S |
| | ● 133.1140LN.B |
| 1 GANG 16A-250V PUSH BUTTON NAME HOLDER | |
| 10/100 | |



| with frontplate | without frontplate |
|-----------------------------|--------------------|
| ○ 133.1141 | ○ 133.1141.W |
| | ● 133.1141.S |
| | ● 133.1141.B |
| 2 GANG 16A-250V PUSH BUTTON | |
| 10/100 | |

(*) lamp included

INTERNATIONAL SOCKETS



| with frontplate | without frontplate |
|--|--------------------|
| ○ 133.2101 | ○ 133.2101.W |
| | ● 133.2101.S |
| | ● 133.2101.B |
| 2P+E 16A-250V SCHUKO SOCKET UNSHUTTERED | |
| 10/100 | |



| with frontplate | without frontplate |
|---|--------------------|
| ○ 133.2201.W | - |
| ● 133.2201.S | - |
| ● 133.2201.B | - |
| 2P+E 16A-250V SCHUKO SOCKET DOUBLE UNSHUTTERED | |
| 10/100 | |
| <i>Item integrated</i> | |



| with frontplate | without frontplate |
|--|--------------------|
| ○ 133.2101P | ○ 133.2101P.W |
| | ● 133.2101P.S |
| | ● 133.2101P.B |
| 2P+E 16A-250V SCHUKO SOCKET SHUTTERED | |
| 10/100 | |



| with frontplate | without frontplate |
|--|--------------------|
| | ● 133.2101P.R |
| 2P+E 16A-250V SCHUKO SOCKET RED SHUTTERED | |
| 10/100 | |
| <i>Product supplied only with red device</i> | |



| with frontplate | without frontplate |
|--|--------------------|
| ○ 133.2102 | ○ 133.2102.W |
| | ● 133.2102.S |
| | ● 133.2102.B |
| 2P+E 16A-250V FRENCH SOCKET SHUTTERED | |
| 10/100 | |



| with frontplate | without frontplate |
|---|--------------------|
| ○ 133.2202.W | - |
| ● 133.2202.S | - |
| ● 133.2202.B | - |
| 2P+E 16A-250V FRENCH SOCKET DOUBLE UNSHUTTERED | |
| 10/100 | |
| <i>Item integrated</i> | |



SWITCHES

HOW TO READ THE TABLE



| with frontplate | without frontplate |
|-----------------|--------------------|
| ○ code white | ○ code white |
| | ● code silver |
| | ● code black |
| DESCRIPTION | |
| pack quantity | |

The first code indicates the white-coloured assembled product (device + plate).
All the items are also available without the plate in various colours.



.W for white



.S for silver



.B for black



+ Frontplates to page 16



| with frontplate | without frontplate |
|---------------------------|--------------------|
| ○ 133.3101 | ○ 133.3101.W |
| | ● 133.3101.S |
| | ● 133.3101.B |
| TV END-LINE SOCKET OUTLET | |
| 10/100 | |



| with frontplate | without frontplate |
|----------------------------|--------------------|
| ○ 133.3102 | ○ 133.3102.W |
| | ● 133.3102.S |
| | ● 133.3102.B |
| SAT SOCKET OUTLET END LINE | |
| 10/100 | |



| with frontplate | without frontplate |
|-----------------------|--------------------|
| ○ 133.3103 | ○ 133.3103.W |
| | ● 133.3103.S |
| | ● 133.3103.B |
| TV-FM END-LINE SOCKET | |
| 10/100 | |



| with frontplate | without frontplate |
|----------------------|--------------------|
| ○ 133.3104 | ○ 133.3104.W |
| | ● 133.3104.S |
| | ● 133.3104.B |
| TV-FM ON-LINE SOCKET | |
| 10/100 | |



| with frontplate | without frontplate |
|----------------------------------|--------------------|
| ○ 133.3106 | ○ 133.3106.W |
| | ● 133.3106.S |
| | ● 133.3106.B |
| TV-FM-SAT END-LINE SOCKET OUTLET | |
| 10/100 | |



TEL. & DATA SOCKETS



| with frontplate | without frontplate |
|-----------------|--------------------|
| ○ 133.4110 | ○ 133.4110.W |
| | ● 133.4110.S |
| | ● 133.4110.B |

1 x RJ12 (6/6) TELEPHONE SOCKET
OUTLET

10/100



| with frontplate | without frontplate |
|-----------------|--------------------|
| ○ 133.4111 | ○ 133.4111.W |
| | ● 133.4111.S |
| | ● 133.4111.B |

2 x RJ11 (6/2) TELEPHONE SOCKET
OUTLET

10/100



| with frontplate | without frontplate |
|-----------------|--------------------|
| ○ 133.4130 | ○ 133.4130.W |
| | ● 133.4130.S |
| | ● 133.4130.B |

1 x RJ45 (8/8) DATA SOCKET
OUTLET

10/100



| with frontplate | without frontplate |
|-----------------|--------------------|
| ○ 133.4131 | ○ 133.4131.W |
| | ● 133.4131.S |
| | ● 133.4131.B |

2 x RJ45 (8/8) DATA SOCKET
OUTLET

10/100

DIMMER CONTROL SWITCHES



| with frontplate | without frontplate |
|-----------------|--------------------|
| ○ 133.5114 | ○ 133.5114.W |
| | ● 133.5114.S |
| | ● 133.5114.B |

1 GANG 400W DIMMER 1 WAY
SWITCH

8/80



| with frontplate | without frontplate |
|-----------------|--------------------|
| ○ 133.5134 | ○ 133.5134.W |
| | ● 133.5134.S |
| | ● 133.5134.B |

1 GANG 400W DIMMER 2 WAY
SWITCH

8/80



| with frontplate | without frontplate |
|-----------------|--------------------|
| ○ 133.5145 | ○ 133.5145.W |
| | ● 133.5145.S |
| | ● 133.5145.B |

1 GANG 500VA DIMMER 2 WAY
SWITCH

8/80



| with frontplate | without frontplate |
|-----------------|--------------------|
| ○ 133.5166 | ○ 133.5166.W |
| | ● 133.5166.S |
| | ● 133.5166.B |

1 GANG 600VA FAN CONTROL
SWITCH

8/80



FRONTPLATE

COLOURS



.W for white



.S for silver



.C for champagne



.B for black



- 133.0191.W ● 133.0191.B
- 133.0191.S
- 133.0191.C

SINGLE FRONTPLATE

30/300



- 133.0292.W ● 133.0292.B
- 133.0292.S
- 133.0292.C

DOUBLE FRONTPLATE

20/200



- 133.0393.W ● 133.0393.C
- 133.0393.S
- 133.0393.B

TRIPLE FRONTPLATE

15/150

ACCESSORIES



133.0104
SURFACE MOUNTING BOX

10



133.0006
LAMP 220V~

10



133.0151
CONNECTION BOX

10/100



with frontplate **without frontplate**
○ 133.0190 ○ 133.0190.W
● 133.0190.S
● 133.0190.B

BLANK PLATE

10/100



133.0001
DISTANCE MD 65-71

10



133.0002
DISTANCE MD 65-91

10



133.0003
PROTECTIVE COVER MD Ø 60

10



133.0004
PROTECTIVE COVER MD Ø 65

10



133.0005
TAPER FOR BOX MD 65

10



133.0113
BRICK WALL BOX MD 65

10



133.0121
PLASTER WALL BOX DEPTH 40

10



133.0122
PLASTER WALL BOX DEPTH 55

10



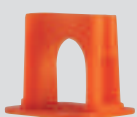
133.0131
CONCRETE BOX DEPTH 40

10



133.0132
CONCRETE BOX DEPTH 60

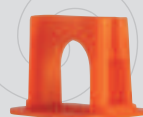
10



133.0001



71 mm



133.0002



91 mm



>NEXTA<
THE FUTURE. TODAY.



>INNOVA<
BRITISH STANDARD
ITALIAN STYLE



>LUXURY<
BRIGHT METAL:
AN ITALIAN EMOTION



>KOMPAS<
A NEW FORM



)EVOLUTION
A COCKTAIL OF SOLUTION





>KOMPAS<

 **SCAME**
electrical solutions

Scame *OnLine*

www.scame.com

export@scame.com

SCAME PARRE S.p.A.

VIA COSTA ERTA, 15

24020 PARRE (BG) ITALY

TEL. +39 035 705000

FAX +39 035 703122

ZP00803-GB-1



8 4001636 410197