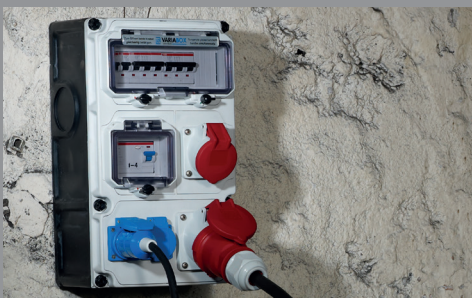




**Bals**  
ELEKTROTECHNIK

# Product Overview

## International Edition



## BALS ELEKTROTECHNIK - THE RIGHT CONNECTION - MADE IN GERMANY -

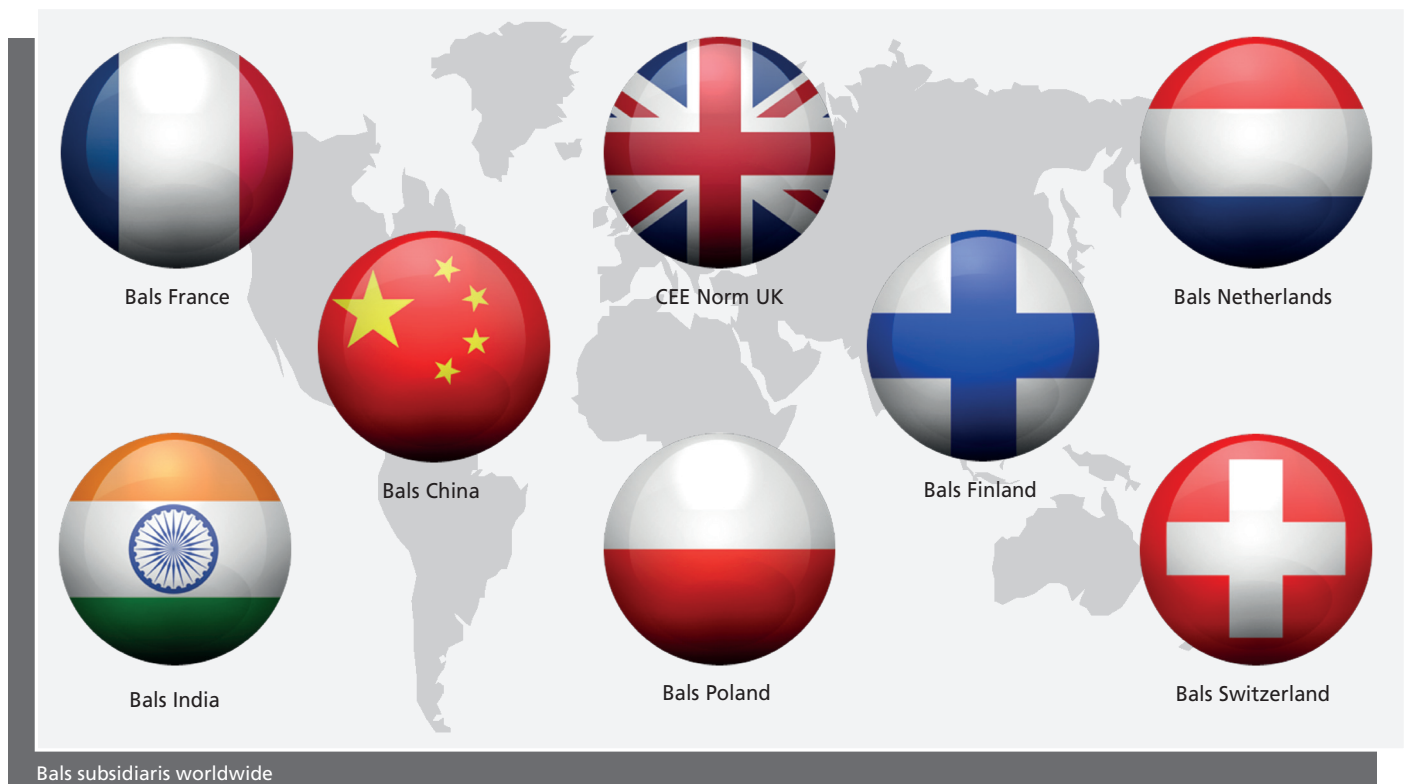
With half a century of expertise and experience, Bals has become a quality brand all over the world and is renowned for its innovation, reliability and service.

For more than 50 years, we have been producing CEE plugs and connectors for the world markets. From day one we have focused on the highest level of quality "Made in Germany". Our factories in Kirchhundem-Albaum and Freiwalde have highly skilled and motivated teams, the very latest manufacturing facilities and a highly efficient logistics system.

Our product portfolio ranges from plugs, phase inverters, connectors, sockets outlets and combinations units to special application devices. Numerous certifications from German and foreign certification institutes, as well as registered designs and patents, document the high technical standard of our products. A unique quality feature which has been developed exclusively by Bals is the maintenance-free Quick-Connect technology.



Factory in Kirchhundem-Albaum



Bals subsidiaries worldwide



## A MODERN PRODUCTION PROCESS - PREMIUM QUALITY FOR INDUSTRIAL REQUIREMENTS -

The ISO-9001-certified production process in all factories ensures the high product quality typical for which Bals is famous.

Modern injection moulding machines and automatic production lines guarantee the consistently high level of quality that you expect from a cableing manufacturer.

Selected raw materials, a modern production process as well as continuous inspection and quality control ensure that you can rely on our combination units, plugs and sockets – one hundred percent, day by day, in every situation.

The high quality of the Bals devices, is reflected in their quality features:

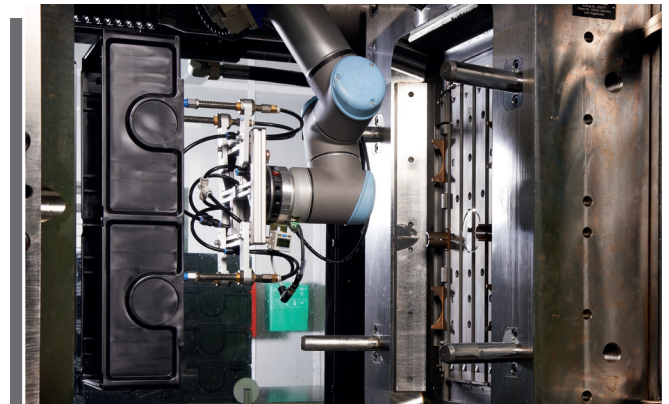
break-proof, dimensionally stable, self-extinguishing, abrasion-, cold-, and heat-resistant.

Bals products convince by long service life and reliable operation.

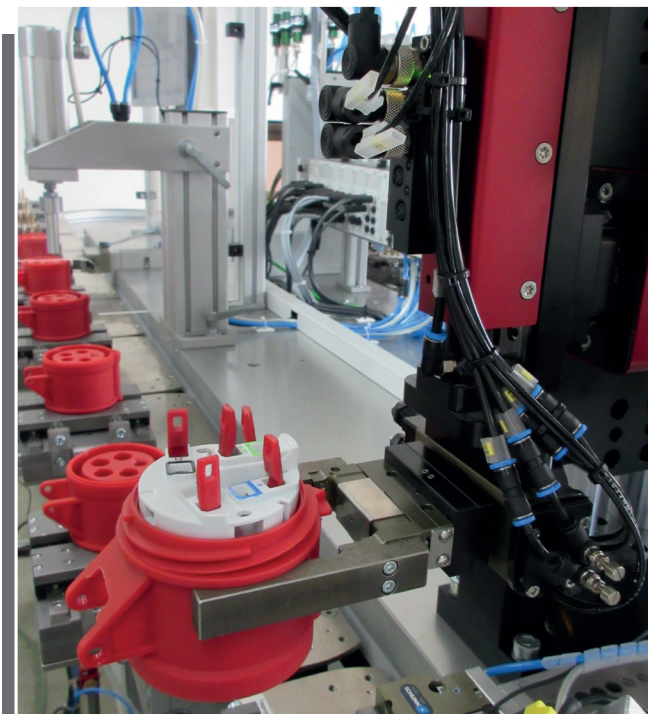
Our presence in more than 80 countries worldwide means that we are always close to the needs of customers. Bals products are also approved in North America, China and South Africa and are therefore ideal for use worldwide.



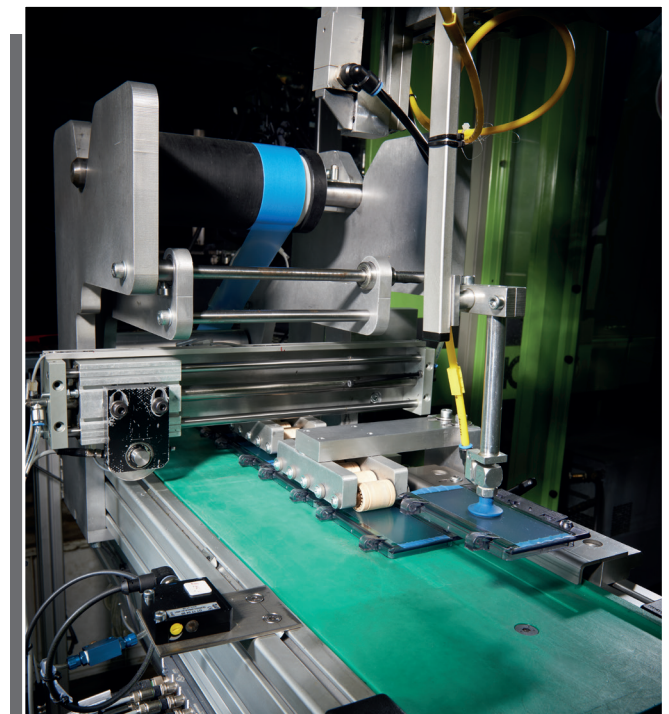
Splash-proof, water test in our own test lab



Automatic removal process on VARIABOX injection molding machine



State-of-the-art assembly lines with integrated automatic testing machines

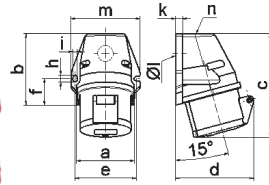


... and integrated removal function

## Quick-Connect Surface Mounting Socket Outlet

- Screwless terminals
- Kontex contact
- Protection degree IP44

**QUICK CONNECT**  
by Bals



Type: 112001

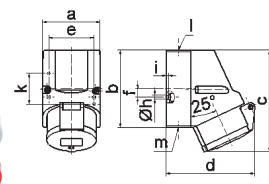
1 MB 19

A <sub>nom</sub>	16	16	16	32	32	32	A	P	V	Art. No.	Qty
P <sub>ins</sub>	3	4	5	3	4	5					
a	59,5	72,4	72,4	79,1	79,1	79,1	16	3	230	<b>11895</b>	10
b	90,0	90,0	90,0	92,0	92,0	92,0	16	4	400	<b>11905</b>	10
c	130,0	130,0	131,0	142,0	142,0	142,0	16	5	400	<b>112001</b>	10
d	85,0	96,0	98,0	103,0	103,0	106,0	32	3	230	<b>11919</b>	10
e	62,0	77,0	77,0	84,0	84,0	84,0	32	4	400	<b>11922</b>	10
f	33,5	33,5	33,5	30,0	30,0	30,0	32	5	400	<b>112002</b>	10
h	9,0	9,0	9,0	9,0	9,0	9,0					
i	5,5	5,5	5,5	5,5	5,5	5,5					
k	8,0	9,0	9,0	9,0	9,0	9,0					
l ø	21,0	21,0	21,0	21,0	21,0	21,0					
m	72,0	87,0	87,0	94,0	94,0	94,0					
n	M20	M25	M25	M25	M25	M25					

## Quick-Connect Surface Mounting Socket Outlet

- Screwless terminals
- Kontex contact
- Protection degree IP44

**QUICK CONNECT**  
by Bals



Type: 11906

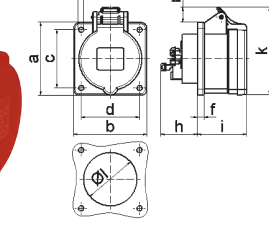
1 MB 7

A <sub>nom</sub>	16	16	16	32	32	32	A	P	V	Art. No.	Qty
P <sub>ins</sub>	3	4	5	3	4	5					
a	64,0	75,0	75,0	83,0	83,0	83,0	16	3	230	<b>11930</b>	10
b	87,0	100,0	100,0	126,0	126,0	126,0	16	4	400	<b>11907</b>	10
c	117,0	129,0	131,0	155,0	155,0	155,0	16	5	400	<b>11906</b>	10
d	103,0	108,0	116,0	130,0	130,0	136,0	16	5	400	<b>11906</b>	10
e	51,0	59,0	59,0	68,0	68,0	68,0	32	3	230	<b>11949</b>	10
f	-	11,0	11,0	11,0	11,0	11,0	32	4	400	<b>11956</b>	10
h ø	4,1	5,1	5,1	5,5	5,5	5,5	32	5	400	<b>11962</b>	10
i	4,5	4,5	4,5	6,5	6,5	6,5					
k	40,0	-	-	80,0	80,0	80,0					
l	M20	M20	M20	M25	M25	M25					
m	for M20	for M20	for M20	2xM25	2xM25	2xM25					

## Quick-Connect Panel Mounting Socket Outlet

- Straight
- Screwless terminals
- Kontex contact
- Flange 75 x 75 mm
- Protection degree IP44

**QUICK CONNECT**  
by Bals



Type: 132001

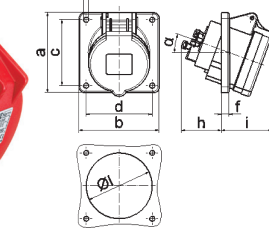
4 MB 263

A <sub>nom</sub>	16	16	16	32	32	32	A	P	V	Art. No.	Qty
P <sub>ins</sub>	3	4	5	3	4	5					
a	75,0	75,0	75,0	75,0	75,0	75,0	16	3	230	<b>13686</b>	10
b	75,0	75,0	75,0	75,0	75,0	75,0	16	4	400	<b>13693</b>	10
c	60,0	60,0	60,0	60,0	60,0	60,0	16	5	400	<b>132001</b>	10
d	60,0	60,0	60,0	60,0	60,0	60,0	32	3	230	<b>13703</b>	10
e ø	5,5	5,5	5,5	5,5	5,5	5,5	32	4	400	<b>13710</b>	10
f	7,0	7,0	7,0	8,0	8,0	8,0	32	5	400	<b>132002</b>	10
h	35,5	35,5	35,5	50,0	50,0	50,0					
i	50,0	50,0	51,0	60,0	60,0	60,0					
k	74,0	84,0	91,0	94,0	94,0	102,0					
l ø	45,0	45,0	55,0	60,0	60,0	60,0					
m	8,0	12,0	16,0	17,0	17,0	22,0					

## Quick-Connect Panel Mounting Socket Outlet

- Angled 20°
- Screwless terminals
- Kontex contact
- Flange 85 x 85 mm
- Protection degree IP44

**QUICK CONNECT**  
by Bals



Type: 12757

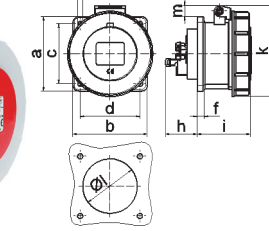
4 MB 264

A <sub>nom</sub>	16	16	16	32	32	32	A	P	V	Art. No.	Qty
P <sub>ins</sub>	3	4	5	3	4	5					
a	85,0	85,0	85,0	85,0	85,0	85,0	16	3	230	<b>12749</b>	10
b	85,0	85,0	85,0	85,0	85,0	85,0	16	4	400	<b>12753</b>	10
c	70,0	70,0	70,0	70,0	70,0	70,0	16	5	400	<b>12757</b>	10
d	70,0	70,0	70,0	70,0	70,0	70,0	16	5	400	<b>12757</b>	10
e ø	5,5	5,5	5,5	5,5	5,5	5,5	32	3	230	<b>12761</b>	10
f	8,0	8,0	8,0	8,0	8,0	8,0	32	4	400	<b>12764</b>	10
h	46,0	46,0	46,0	61,0	61,0	61,0	32	5	400	<b>12768</b>	10
i	50,0	51,0	54,0	60,0	60,0	60,0					
l ø	57,0	65,0	70,0	78,0	78,0	78,0					
α	20°	20°	20°	20°	20°	20°					

## Quick-Connect Panel Mounting Socket Outlet

- Straight
- Screwless terminals
- Kontex contact
- Flange 75 x 75 mm
- Protection degree IP67

**QUICK CONNECT**  
by Bals



Type: 13745

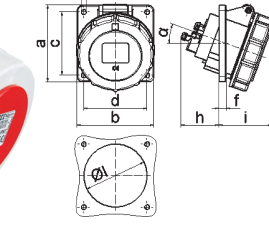
4 MB 105

A <sub>nom</sub>	16	16	16	32	32	32	A	P	V	Art. No.	Qty
P <sub>ins</sub>	3	4	5	3	4	5					
a	75,0	75,0	75,0	75,0	75,0	75,0	16	3	230	<b>13734</b>	10
b	75,0	75,0	75,0	75,0	75,0	75,0	16	4	400	<b>13739</b>	10
c	60,0	60,0	60,0	60,0	60,0	60,0	16	5	400	<b>13745</b>	10
d	60,0	60,0	60,0	60,0	60,0	60,0	16	5	400	<b>13745</b>	10
e ø	5,5	5,5	5,5	5,5	5,5	5,5	32	3	230	<b>13750</b>	10
f	7,0	7,0	7,0	8,0	8,0	8,0	32	4	400	<b>13756</b>	10
h	35,5	35,5	35,5	50,0	50,0	50,0	32	5	400	<b>13762</b>	10
i	57,0	58,0	57,0	65,0	65,0	65,0					
k	76,0	83,0	93,0	100,0	100,0	106,0					
l ø	45,0	45,0	55,0	60,0	60,0	60,0					
m	3,5	7,0	11,5	12,0	12,0	17,0					

## Quick-Connect Panel Mounting Socket Outlet

- Angled 20°
- Screwless terminals
- Kontex contact
- Flange 85 x 85 mm
- Protection degree IP67

**QUICK CONNECT**  
by Bals



Type: 12817

4 MB 114

A <sub>nom</sub>	16	16	16	32	32	32	A	P	V	Art. No.	Qty
P <sub>ins</sub>	3	4	5	3	4	5					
a	85,0	85,0	85,0	85,0	85,0	85,0	16	3	230	<b>12813</b>	10
b	85,0	85,0	85,0	85,0	85,0	85,0	16	4	400	<b>12814</b>	10
c	70,0	70,0	70,0	70,0	70,0	70,0	16	5	400	<b>12817</b>	10
d	70,0	70,0	70,0	70,0	70,0	70,0	16	5	400	<b>12817</b>	10
e ø	5,5	5,5	5,5	5,5	5,5	5,5	32	3	230	<b>12819</b>	10
f	8,0	8,0	8,0	8,0	8,0	8,0	32	4	400	<b>12821</b>	10
h	46,0	46,0	46,0	61,0	61,0	61,0	32	5	400	<b>12824</b>	10
i	57,0	57,0	60,0	65,0	65,0	69,0					
l ø	57,0	65,0	70,0	78,0	78,0	78,0					
α	20°	20°	20°	20°	20°	20°					



# 16A and 32A

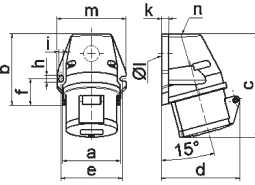


MADE IN GERMANY

WITH SCREW TERMINALS

## Surface Mounting Socket Outlet

- Screw terminals
- Protection degree IP44



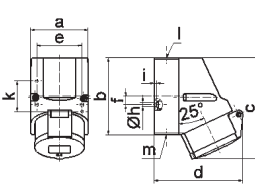
Type: 101

1 MB 19

A <sub>request</sub>	16	16	16	32	32	32	A	P	V	Art. No.	Qty
P <sub>dist</sub>	3	4	5	3	4	5					
a	59,5	72,4	72,4	79,1	79,1	79,1	16	3	230	<b>11765</b>	10
b	90,0	90,0	90,0	92,0	92,0	92,0	16	4	400	<b>11645</b>	10
c	130,0	130,0	131,0	142,0	142,0	142,0					
d	85,0	96,0	98,0	103,0	103,0	106,0	16	5	400	<b>100</b>	10
e	62,0	77,0	77,0	84,0	84,0	84,0					
f	33,5	33,5	33,5	30,0	30,0	30,0	32	3	230	<b>11651</b>	10
h	9,0	9,0	9,0	9,0	9,0	9,0					
i	5,5	5,5	5,5	5,5	5,5	5,5					
k	8,0	9,0	9,0	9,0	9,0	9,0	32	4	400	<b>11646</b>	10
l	21,0	21,0	21,0	21,0	21,0	21,0					
m	72,0	87,0	87,0	94,0	94,0	94,0	32	5	400	<b>101</b>	10
n	M20	M25	M25	M25	M25	M25					

## Surface Mounting Socket Outlet

- Screw terminals
- Protection degree IP44



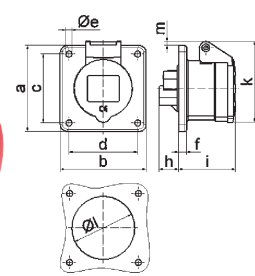
Type: 103

1 MB 7

A <sub>request</sub>	16	16	16	32	32	32	A	P	V	Art. No.	Qty
P <sub>dist</sub>	3	4	5	3	4	5					
a	64,0	75,0	75,0	83,0	83,0	83,0	16	3	230	<b>111</b>	10
b	87,0	100,0	100,0	126,0	126,0	126,0	16	4	400	<b>115</b>	10
c	117,0	129,0	131,0	155,0	155,0	155,0					
d	103,0	108,0	116,0	130,0	130,0	136,0	16	5	400	<b>102</b>	10
e	51,0	59,0	59,0	68,0	68,0	68,0					
f	-	11,0	11,0	11,0	11,0	11,0	32	3	230	<b>1114</b>	10
h	4,1	5,1	5,1	5,5	5,5	5,5					
i	4,5	4,5	4,5	6,5	6,5	6,5	32	4	400	<b>1118</b>	10
k	40,0	-	-	80,0	80,0	80,0					
l	M20	M20	M20	M25	M25	M25	32	5	400	<b>103</b>	10
m	for M20	for M20	for M20	2xM25	2xM25	2xM25					

## Panel Mounting Socket Outlet

- Straight
- Screw terminals
- Flange 75 x 75 mm
- Protection degree IP44



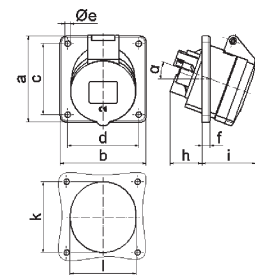
Type: 1333

4 MB 4

A <sub>request</sub>	16	16	16	32	32	32	A	P	V	Art. No.	Qty
P <sub>dist</sub>	3	4	5	3	4	5					
a	75,0	75,0	75,0	75,0	75,0	75,0	16	3	230	<b>13001</b>	10
b	75,0	75,0	75,0	75,0	75,0	75,0	16	4	400	<b>1324</b>	10
c	60,0	60,0	60,0	60,0	60,0	60,0					
d	60,0	60,0	60,0	60,0	60,0	60,0	16	5	400	<b>13005</b>	10
e	5,5	5,5	5,5	5,5	5,5	5,5					
f	7,0	7,0	7,0	8,0	8,0	8,0	32	3	230	<b>13007</b>	10
h	17,0	26,0	17,0	36,0	36,0	19,0					
i	51,0	53,0	53,0	62,0	62,0	62,0	32	4	400	<b>13011</b>	10
k	70,0	80,0	85,0	90,0	90,0	98,0					
l	45,0	45,0	55,0	60,0	60,0	60,0	32	5	400	<b>1333</b>	10
m	3,5	7,0	11,5	12,0	12,0	17,0					

## Panel Mounting Socket Outlet

- Angled 20°
- Screw terminals
- Flange 85 x 85 mm
- Protection degree IP44



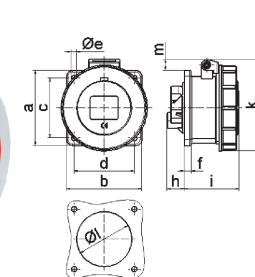
Type: 12078

4 MB 26

A <sub>request</sub>	16	16	16	32	32	32	A	P	V	Art. No.	Qty
P <sub>dist</sub>	3	4	5	3	4	5					
a	85,0	85,0	85,0	85,0	85,0	85,0	16	3	230	<b>12080</b>	10
b	85,0	85,0	85,0	85,0	85,0	85,0	16	4	400	<b>12500</b>	10
c	70,0	70,0	70,0	70,0	70,0	70,0					
d	70,0	70,0	70,0	70,0	70,0	70,0	16	5	400	<b>12078</b>	10
e	5,5	5,5	5,5	5,5	5,5	5,5					
f	8,0	8,0	8,0	8,0	8,0	8,0	16	5	400	<b>12078</b>	10
h	30,0	30,0	30,0	50,0	50,0	50,0	32	3	230	<b>12310</b>	10
i	48,0	50,0	54,0	63,0	63,0	60,0					
k	57,0	65,0	70,0	78,0	78,0	78,0	32	4	400	<b>12311</b>	10
l	57,0	65,0	70,0	78,0	78,0	78,0					
α	20°	20°	20°	20°	20°	20°	32	5	400	<b>1215</b>	10

## Panel Mounting Socket Outlet

- Straight
- Screw terminals
- Flange 75 x 75 mm
- Protection degree IP67



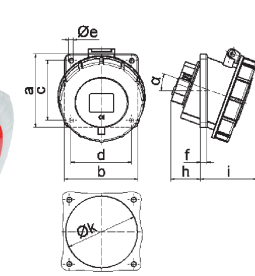
Type: 1370

4 MB 5

A <sub>request</sub>	16	16	16	32	32	32	A	P	V	Art. No.	Qty
P <sub>dist</sub>	3	4	5	3	4	5					
a	75,0	75,0	75,0	75,0	75,0	75,0	16	3	230	<b>1372</b>	10
b	75,0	75,0	75,0	75,0	75,0	75,0	16	4	400	<b>1376</b>	10
c	60,0	60,0	60,0	60,0	60,0	60,0					
d	60,0	60,0	60,0	60,0	60,0	60,0	16	5	400	<b>1382</b>	10
e	5,5	5,5	5,5	5,5	5,5	5,5					
f	7,0	7,0	7,0	8,0	8,0	8,0	32	3	230	<b>13024</b>	10
h	17,0	26,0	17,0	36,0	36,0	19,0					
i	57,0	58,0	57,0	65,0	65,0	65,0	32	4	400	<b>13028</b>	10
k	76,0	83,0	93,0	100,0	100,0	106,0					
l	45,0	45,0	55,0	60,0	60,0	60,0	32	5	400	<b>1370</b>	10
m	3,5	7,0	11,5	12,0	12,0	17,0					

## Panel Mounting Socket Outlet

- Angled 20°
- Screw terminals
- Flange 85 x 85 mm
- Protection degree IP67



Type: 12084

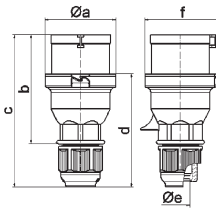
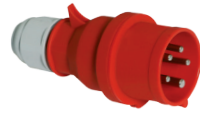
4 MB 22

A <sub>request</sub>	16	16	16	32	32	32	A	P	V	Art. No.	Qty
P <sub>dist</sub>	3	4	5	3	4	5					
a	85,0	85,0	85,0	85,0	85,0	85,0	16	3	230	<b>12231</b>	10
b	85,0	85,0	85,0	85,0	85,0	85,0	16	4	400	<b>12502</b>	10
c	70,0	70,0	70,0	70,0	70,0	70,0					
d	70,0	70,0	70,0	70,0	70,0	70,0	16	5	400	<b>12084</b>	10
e	5,5	5,5	5,5	5,5	5,5	5,5					
f	8,0	8,0	8,0	8,0	8,0	8,0	32	3	230	<b>12327</b>	10
h	30,0	30,0	30,0	50,0	50,0	34,0					
i	55,0	57,0	59,0	67,0	67,0	69,0	32	4	400	<b>12329</b>	10
k	57,0	65,0	70,0	78,0	78,0	78,0					
l	57,0	65,0	70,0	78,0	78,0	78,0	32	5	400	<b>1264</b>	10
α	20°	20°	20°	20°	20°	20°					

## Quick-Connect Plug with Multi-Grip

- Screwless terminals
- Housing connection with thread and snap-in lock
- Cable gland Multi-Grip system
- Protection degree IP44

**QUICK CONNECT**  
by Bals



Type: 2136

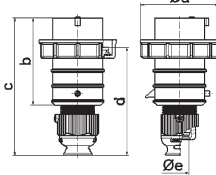
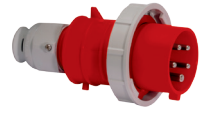
2 MB 99

A <sub>nom</sub>	16	16	16	32	32	32	A	P	V	Art. No.	Qty
P <sub>ins</sub>	3	4	5	3	4	5					
a ø	53,0	60,0	66,0	74,5	74,5	74,5	16	3	230	<b>2126</b>	10
b	93,5	100,5	103,0	121,0	121,0	121,5	16	4	400	<b>2130</b>	10
c	134,0	141,0	142,0	174,0	174,0	174,5	16	5	400	<b>2136</b>	10
d	97,5	104,5	105,5	128,0	128,0	128,5					
e ø	18,0	18,0	18,0	23,0	23,0	23,0	32	3	230	<b>2138</b>	10
f	57,5	64,5	70,5	78,0	78,0	80,0	32	4	400	<b>2142</b>	10
							32	5	400	<b>2148</b>	10

## TE-Plus Plug with Multi-Grip

- Screwless terminals
- High temperature resistant contact carrier
- Nickel plated contacts
- Cable gland Multi-Grip system
- Protection degree IP67

**QUICK CONNECT**  
by Bals



Type: 21241

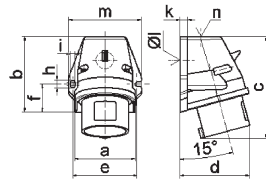
2 MB 94

A <sub>nom</sub>	16	16	16	32	32	32	A	P	V	Art. No.	Qty
P <sub>ins</sub>	3	4	5	3	4	5					
a ø	70,0	78,0	86,0	94,0	94,0	101,0	16	3	230	<b>21238</b>	10
b	95,0	95,0	97,0	118,0	118,0	117,0	16	4	400	<b>21349</b>	10
c	145,0	145,0	152,0	178,0	178,0	181,0	16	5	400	<b>21239</b>	10
d	111,0	111,0	119,0	136,0	136,0	138,5					
e ø	18,0	18,0	21,0	23,0	23,0	27,0	32	3	230	<b>21240</b>	10
							32	4	400	<b>21351</b>	10
							32	5	400	<b>21241</b>	10

## Quick-Connect Surface Mounting Appliance Inlet

- Screwless terminals
- Protection degree IP44

**QUICK CONNECT**  
by Bals



Type: 242001

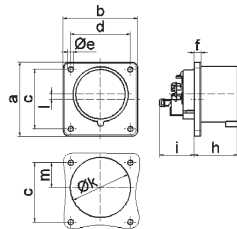
5 MB 44

A <sub>nom</sub>	16	16	16	32	32	32	A	P	V	Art. No.	Qty
P <sub>ins</sub>	3	4	5	3	4	5					
a	59,5	72,4	72,4	79,1	79,1	79,1	16	3	230	<b>24423</b>	10
b	90,0	90,0	90,0	92,0	92,0	92,0	16	4	400	<b>24392</b>	10
c	120,0	120,0	122,0	134,0	134,0	134,0	16	5	400	<b>242001</b>	10
d	72,0	84,0	84,0	89,0	89,0	89,0					
e	62,0	77,0	77,0	84,0	84,0	84,0	16	5	400	<b>242001</b>	10
f	33,5	33,5	33,5	30,0	30,0	30,0	32	3	230	<b>24402</b>	10
h	9,0	9,0	9,0	9,0	9,0	9,0	32	3	230	<b>24402</b>	10
i	5,5	5,5	5,5	5,5	5,5	5,5	32	3	230	<b>24402</b>	10
k	8,0	9,0	9,0	9,0	9,0	9,0	32	4	400	<b>24405</b>	10
l ø	21,0	21,0	21,0	21,0	21,0	21,0	32	4	400	<b>24405</b>	10
m	72,0	87,0	87,0	94,0	94,0	94,0	32	5	400	<b>242002</b>	10
n	M20	M25	M25	M25	M25	M25					

## Quick-Connect Appliance Inlet with Flange

- Screwless terminals
- Flange 75 x 75 mm
- Protection degree IP44

**QUICK CONNECT**  
by Bals



Type: 282002

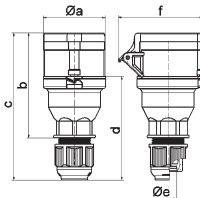
5 MB 85

A <sub>nom</sub>	16	16	16	32	32	32	A	P	V	Art. No.	Qty
P <sub>ins</sub>	3	4	5	3	4	5					
a	75,0	75,0	75,0	75,0	75,0	75,0	16	3	230	<b>28111</b>	10
b	75,0	75,0	75,0	75,0	75,0	75,0	16	4	400	<b>28112</b>	10
c	60,0	60,0	60,0	60,0	60,0	60,0	16	5	400	<b>282001</b>	10
d	60,0	60,0	60,0	60,0	60,0	60,0					
e ø	5,5	5,5	5,5	5,5	5,5	5,5	16	5	400	<b>282001</b>	10
f	7,0	7,0	7,0	7,0	7,0	7,0	16	5	400	<b>282001</b>	10
h	43,0	43,0	43,0	53,0	53,0	53,0	32	3	230	<b>28010</b>	10
i	39,0	39,0	39,0	50,0	50,0	50,0	32	3	230	<b>28010</b>	10
k ø	42,0	48,0	61,0	57,0	57,0	60,0	32	4	400	<b>28012</b>	10
l	-	-	5,0	2,0	2,0	-	32	4	400	<b>28012</b>	10
m	30,0	30,0	25,0	28,0	28,0	30,0	32	5	400	<b>282002</b>	10

## Quick-Connect Connector with Multi-Grip

- Screwless terminals
- Housing connection with thread and snap-in lock
- Cable gland Multi-Grip system
- Kontex contact
- Protection degree IP44

**QUICK CONNECT**  
by Bals



Type: 3148

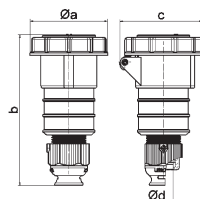
3 MB 65

A <sub>nom</sub>	16	16	16	32	32	32	A	P	V	Art. No.	Qty
P <sub>ins</sub>	3	4	5	3	4	5					
a ø	53,0	60,0	66,0	74,5	74,5	74,5	16	3	230	<b>3126</b>	10
b	100,5	112,5	113,5	133,5	133,5	134,5	16	4	400	<b>3130</b>	10
c	141,0	153,0	154,0	186,0	186,0	187,0	16	5	400	<b>3136</b>	10
d	97,5	104,5	105,5	127,5	127,5	128,5	16	5	400	<b>3136</b>	10
e ø	18,0	18,0	18,0	23,0	23,0	23,0	32	3	230	<b>3138</b>	10
f	76,0	79,0	86,0	92,0	92,0	97,0	32	4	400	<b>3142</b>	10
							32	5	400	<b>3148</b>	10

## TE-Plus Connector with Multi-Grip

- Screwless terminals
- High temperature resistant contact carrier
- Nickel plated contacts
- Cable gland Multi-Grip system
- Kontex contact
- Protection degree IP67

**QUICK CONNECT**  
by Bals



Type: 31243

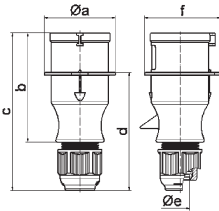
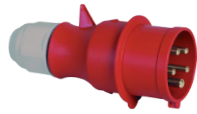
3 MB 63

A <sub>nom</sub>	16	16	16	32	32	32	A	P	V	Art. No.	Qty
P <sub>ins</sub>	3	4	5	3	4	5					
a ø	70,5	78,0	86,5	94,0	94,0	101,5	16	3	230	<b>31240</b>	10
b	161,0	161,0	168,0	196,0	196,0	200,0	16	4	400	<b>31241</b>	10
c	77,0	83,0	93,0	99,0	99,0	107,0	16	5	400	<b>31243</b>	10
d ø	18,0	18,0	21,0	23,0	23,0	27,0	32	3	230	<b>31244</b>	10
							32	4	400	<b>31245</b>	10
							32	5	400	<b>31247</b>	10



### TLS Plug with Multi-Grip

- Screw terminals
- Cable gland Multi-Grip system
- One-piece housing
- Protection degree IP44



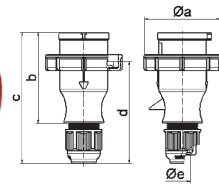
A <sub>request</sub>	16	16	16	32	32	32	A	P	V	Art. No.	Qty
P <sub>dist</sub>	3	4	5	3	4	5					
a Ø	54,0	60,0	66,0	71,0	71,0	80,0	16	3	230	<b>21001-TLS</b>	10
b	94,5	98,0	101,0	115,0	115,0	119,0	16	4	400	<b>21005-TLS</b>	10
c	138,0	142,0	145,0	170,0	170,0	174,0					
d	101,5	105,5	108,5	124,0	124,0	128,0	16	5	400	<b>203-TLS</b>	10
e Ø	18,0	18,0	18,0	23,0	23,0	23,0					
f	56,6	64,0	71,0	76,0	76,0	85,0					
							32	3	230	<b>21013-TLS</b>	10
							32	4	400	<b>21017-TLS</b>	10
							32	5	400	<b>204-TLS</b>	10

Type: 204-TLS

2 MB 129

### TLS Plug with Multi-Grip

- Screw terminals
- Nickel plated contacts
- Cable gland Multi-Grip system
- One-piece housing
- Protection degree IP67



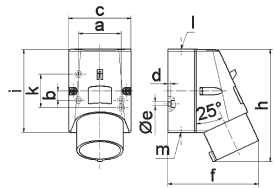
A <sub>request</sub>	16	16	16	32	32	32	A	P	V	Art. No.	Qty
P <sub>dist</sub>	3	4	5	3	4	5					
a Ø	70,0	78,0	86,0	94,0	94,0	101,0	16	3	230	<b>210576</b>	10
b	94,5	98,0	101,0	115,0	115,0	119,0	16	4	400	<b>210583</b>	10
c	138,0	142,0	145,0	170,0	170,0	174,0					
d	105,5	109,5	112,5	128,0	128,0	132,0	16	5	400	<b>210589</b>	10
e Ø	18,0	18,0	18,0	23,0	23,0	23,0					
							32	3	230	<b>210594</b>	10
							32	4	400	<b>210601</b>	10
							32	5	400	<b>210607</b>	10

Type: 210589

2 MB 130

### Surface Mounting Appliance Inlet

- Screw terminals
- Protection degree IP44



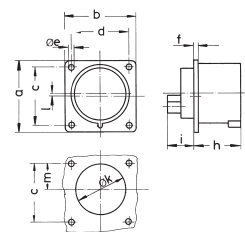
A <sub>request</sub>	16	16	16	32	32	32	A	P	V	Art. No.	Qty
P <sub>dist</sub>	3	4	5	3	4	5					
a	51,0	59,0	59,0	65,0	65,0	65,0	16	3	230	<b>245</b>	10
b	-	11,0	11,0	11,0	11,0	11,0					
c	64,0	75,0	75,0	83,0	83,0	83,0	16	4	400	<b>249</b>	10
d	4,0	4,0	4,0	6,5	6,5	6,5					
e Ø	4,1	5,1	5,1	5,5	5,5	5,5	16	5	400	<b>2415</b>	10
f	93,0	106,0	110,0	128,0	128,0	130,0					
h	122,0	135,0	135,0	165,0	165,0	166,0	32	3	230	<b>24168</b>	10
i	87,0	100,0	100,0	126,0	126,0	126,0	32	3	230	<b>24168</b>	10
k	40,0	-	-	-	-	-	32	4	400	<b>24172</b>	10
l	M20	M20	M20	M25	M25	M25					
m	for M20	for M20	for M20	2xM25	2xM25	2xM25	32	5	400	<b>24144</b>	10

Type: 2415

5 MB 47/45

### Appliance Inlet with Flange

- Screw terminals
- Flange 75 x 75 mm
- Nickel plated contacts
- Protection degree IP44



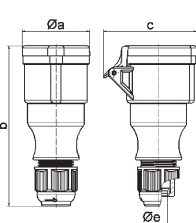
A <sub>request</sub>	16	16	16	32	32	32	A	P	V	Art. No.	Qty
P <sub>dist</sub>	3	4	5	3	4	5					
a	75,0	75,0	75,0	75,0	75,0	75,0	16	3	230	<b>2817</b>	10
b	75,0	75,0	75,0	75,0	75,0	75,0					
c	60,0	60,0	60,0	60,0	60,0	60,0	16	4	400	<b>2831</b>	10
d	60,0	60,0	60,0	60,0	60,0	60,0					
e Ø	5,5	5,5	5,5	5,5	5,5	5,5	16	5	400	<b>2814</b>	10
f	7,0	7,0	7,0	7,0	7,0	7,0					
h	43,0	43,0	43,0	53,0	53,0	53,0	32	3	230	<b>2827</b>	10
i	24,0	24,0	24,0	30,0	30,0	30,0					
k Ø	42,0	48,0	61,0	57,0	57,0	57,0	32	4	400	<b>2830</b>	10
l	-	-	5,0	2,0	2,0	-					
m	30,0	30,0	25,0	28,0	28,0	30,0	32	5	400	<b>2815</b>	10

Type: 2815

5 MB 39

### TLS Connector with Multi-Grip

- Screw terminals
- Cable gland Multi-Grip system
- One-piece housing
- Protection degree IP44



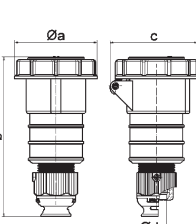
A <sub>request</sub>	16	16	16	32	32	32	A	P	V	Art. No.	Qty
P <sub>dist</sub>	3	4	5	3	4	5					
a Ø	51,0	58,0	65,0	67,0	67,0	73,0	16	3	230	<b>31001-TLS</b>	10
b	145,0	148,0	156,0	185,0	185,0	185,0	16	4	400	<b>31005-TLS</b>	10
c	74,0	84,0	90,0	94,0	94,0	102,0					
e Ø	18,0	18,0	18,0	23,0	23,0	23,0	16	5	400	<b>303-TLS</b>	10
							32	3	230	<b>31013-TLS</b>	10
							32	4	400	<b>31017-TLS</b>	10
							32	5	400	<b>304-TLS</b>	10

Type: 304-TLS

3 MB 82

### TLS Connector with Multi-Grip

- Screw terminals
- Nickel plated contacts
- Cable gland Multi-Grip system
- One-piece housing
- Protection degree IP67



A <sub>request</sub>	16	16	16	32	32	32	A	P	V	Art. No.	Qty
P <sub>dist</sub>	3	4	5	3	4	5					
a Ø	70,5	78,0	86,5	94,0	94,0	101,5	16	3	230	<b>310333</b>	10
b	154,0	155,0	160,0	190,0	190,0	190,0	16	4	400	<b>310340</b>	10
c	77,0	83,0	93,0	99,0	107,0	107,0					
e Ø	18,0	18,0	18,0	23,0	23,0	23,0	16	5	400	<b>310346</b>	10
							32	3	230	<b>310351</b>	10
							32	4	400	<b>310358</b>	10
							32	5	400	<b>310364</b>	10

Type: 310346

3 MB 81

# 63A und 125A

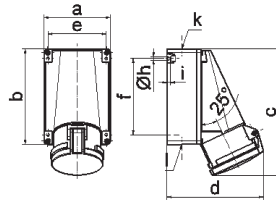


## Surface Mounting Socket Outlet

- Screw or screwless terminals
- Nickel plated contacts
- Kontex Plus with box terminals
- Without pilot-contact, with pilot-contact add „P” to the cat.no.
- Protection degree IP44



Type: 110383



1 MB 4

A <sub>request</sub>	63	63
E <sub>execution</sub>	QC	screw
a	118,0	118,0
b	170,0	170,0
c	223,0	223,0
d	168,0	168,0
e	104,0	104,0
f	136,0	136,0
h	6,1	6,1
i	6,0	6,0
k	M40	M40
l	M32/32	M32/32

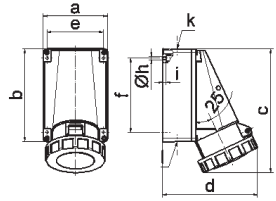
Execution	A	P	V	Art. No.	Qty
QUICK CONNECT	63	4	400	<u>110415</u>	5
QUICK CONNECT	63	5	400	<u>110383</u>	5
screw	63	3	230	<u>1104</u>	5
screw	63	4	400	<u>1127</u>	5
screw	63	5	400	<u>1124</u>	5

## Surface Mounting Socket Outlet

- Screw or screwless terminals
- Nickel plated contacts
- Without pilot-contact, with pilot-contact add „P” to the cat.no.
- Protection degree IP67



Type: 110413



1 MB 3/20

A <sub>request</sub>	63	125
E <sub>execution</sub>	QC	screw
a	118,0	160,0
b	170,0	260,0
c	228,0	330,0
d	176,0	168,0
e	104,0	140,0
f	136,0	240,0
h	6,1	8,3
i	6,0	10,0
k	M40	M50
l	M32/32	-

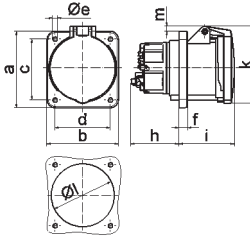
Execution	A	P	V	Art. No.	Qty
QUICK CONNECT	63	5	400	<u>110413</u>	5
screw	63	3	230	<u>1157</u>	5
screw	63	4	400	<u>1161</u>	5
screw	63	5	400	<u>1112</u>	5
screw	125	3	230	<u>11437</u>	1
screw	125	4	400	<u>11441</u>	1
screw	125	5	400	<u>11447</u>	1

## Panel Mounting Socket Outlet

- Straight
- Screw or screwless terminals
- High temperature resistant contact carrier
- Flange 107 x 100 mm
- Protection degree IP44



Type: 130114



4 MB 265

A <sub>request</sub>	63	63
E <sub>execution</sub>	QC	screw
a	107,0	107,0
b	100,0	100,0
c	85,0	85,0
d	77,0	77,0
e	6,5	6,5
f	12,0	12,0
h	67,0	56,5
i	77,0	77,0
k	110,0	110,0
l	88,0	88,0
m	7,0	7,0

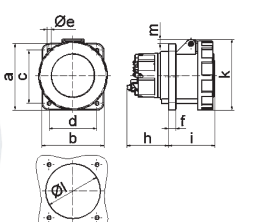
Execution	A	P	V	Art. No.	Qty
QUICK CONNECT	63	4	400	<u>130130</u>	5
QUICK CONNECT	63	5	400	<u>130114</u>	5
screw	63	3	230	<u>1307</u>	5
screw	63	4	400	<u>134</u>	5
screw	63	5	400	<u>136</u>	5

## Panel Mounting Socket Outlet

- Straight
- Screw or screwless terminals
- High temperature resistant contact carrier
- Flange 107 x 100 mm
- Protection degree IP67



Type: 130119



4 MB 267/55

A <sub>request</sub>	63	63	125
P <sub>des</sub>	QC	screw	screw
a	107,0	107,0	120,0
b	100,0	100,0	120,0
c	85,0	85,0	100,0
d	77,0	77,0	100,0
e	6,5	6,5	6,5
f	12,0	12,0	21,0
h	67,0	56,5	50,0
i	76,0	76,0	117,0
k	113,0	113,0	129,0
l	88,0	88,0	104,0
m	7,0	7,0	6,0

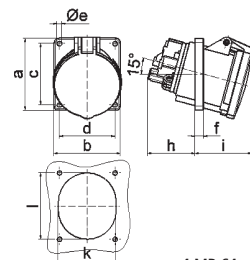
Execution	A	P	V	Art. No.	Qty
QUICK CONNECT	63	5	400	<u>130119</u>	5
screw	63	3	230	<u>1396</u>	5
screw	63	4	400	<u>13100</u>	5
screw	63	5	400	<u>13104</u>	5
screw	125	3	230	<u>13452</u>	5
screw	125	4	400	<u>13447</u>	5
screw	125	5	400	<u>13451</u>	5

## Panel Mounting Socket Outlet

- Angled
- Screw or screwless terminals
- High temperature resistant contact carrier
- Flange 100 x 92 mm
- Protection degree IP44



Type: 120273



4 MB 64

A <sub>request</sub>	63	63	63
P <sub>des</sub>	3	4	5
a	100,0	100,0	100,0
b	92,0	92,0	92,0
c	85,0	85,0	85,0
d	77,0	77,0	77,0
e	6,5	6,5	6,5
f	12,0	12,0	12,0
h	65,0	65,0	65,0
i	81,0	81,0	81,0
k	80,0	80,0	80,0
l	92,0	92,0	92,0

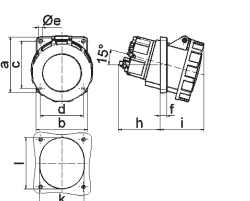
Execution	A	P	V	Art. No.	Qty
QUICK CONNECT	63	5	400	<u>120273</u>	5
screw	63	3	230	<u>12563</u>	10
screw	63	4	400	<u>12074</u>	10
screw	63	5	400	<u>12567</u>	10

## Panel Mounting Socket Outlet

- Angled
- Screw or screwless terminals
- High temperature resistant contact carrier
- Flange 100 x 92 mm (at 63A)
- Flange 114 x 114 mm (at 125A)
- Protection degree IP67



Type: 120274



4 MB 268

A <sub>request</sub>	63	63	125
P <sub>des</sub>	QC	3-5	3/5
a	100,0	100,0	114,0
b	92,0	92,0	114,0
c	85,0	85,0	90,0
d	77,0	77,0	90,0
e	6,5	6,5	6,5
f	12,0	12,0	12,0
h	74,0	65,0	82,0
i	80,0	80,0	90,0
k	80,0	80,0	92,0
l	92,0	92,0	105,0

Execution	A	P	V	Art. No.	Qty
QUICK CONNECT	63	4	400	<u>120320</u>	5
QUICK CONNECT	63	5	400	<u>120274</u>	5
screw	63	3	230	<u>12569</u>	10
screw	63	4	400	<u>12570</u>	10
screw	63	5	400	<u>12574</u>	10
screw	125	3	230	<u>12100</u>	5
screw	125	5	400	<u>12108</u>	5



# 63A und 125A

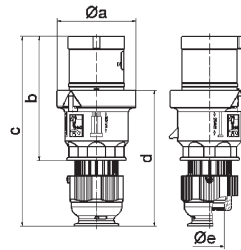


## TE Plug with Multi-Grip

- Screw or screwless terminals
- High temperature resistant contact carrier
- Nickel plated contacts
- Cable gland Multi-Grip system
- Housing connection with thread and snap-in lock
- Protection degree IP44



Type: 210765



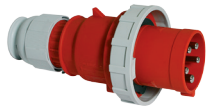
2 MB 158

A <sub>type</sub>	63
P <sub>dec</sub>	3/4/5
a ø	96,0
b	153,0
c	233,0
d	167,0
e ø	36,0

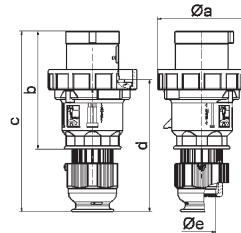
Execution	A	P	V	Art. No.	Qty
QUICK-CONNECT	63	4	400	<b>210761</b>	5
QUICK-CONNECT	63	5	400	<b>210765</b>	5
screw	63	3	230	<b>2104</b>	5
screw	63	4	400	<b>2151</b>	5
screw	63	5	400	<b>2155</b>	5

## TE Plug with Multi-Grip

- Screw or screwless terminals
- High temperature resistant contact carrier
- Nickel plated contacts
- Cable gland Multi-Grip system
- Housing connection with thread and snap-in lock
- Protection degree IP67



Type: 210766



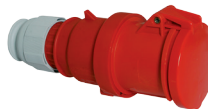
2 MB 159

A <sub>type</sub>	63	125
P <sub>dec</sub>	3/4/5	3/4/5
a ø	113,5	126,0
b	153,0	181,0
c	233,0	282,0
d	171,0	206,0
e ø	36,0	50,0

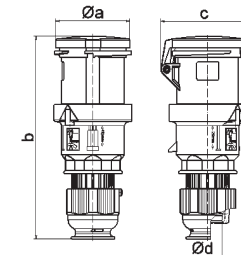
Execution	A	P	V	Art. No.	Qty
QUICK-CONNECT	63	5	400	<b>210766</b>	5
screw	63	3	230	<b>2181</b>	5
screw	63	4	400	<b>2185</b>	5
screw	63	5	400	<b>2189</b>	5
screw	125	3	230	<b>2191</b>	5
screw	125	4	400	<b>2195</b>	5
screw	125	5	400	<b>2199</b>	5

## Quick-Connect Connector with Multi-Grip

- Screw or screwless terminals
- High temperature resistant contact carrier
- Nickel plated contacts
- Cable gland Multi-Grip system
- Housing connection with thread and snap-in lock
- Protection degree IP44



Type: 310494



3 MB 107

A <sub>type</sub>	63
P <sub>dec</sub>	3/4/5
a ø	95,0
b	251,0
c	109,0
d ø	36,0

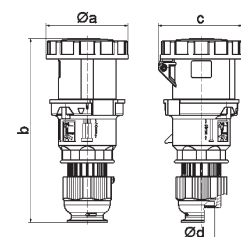
Execution	A	P	V	Art. No.	Qty
QUICK-CONNECT	63	4	400	<b>310490</b>	5
QUICK-CONNECT	63	5	400	<b>310494</b>	5
screw	63	3	230	<b>3104</b>	5
screw	63	4	400	<b>3151</b>	5
screw	63	5	400	<b>3112</b>	5

## TE Connector with Multi-Grip

- Screw or screwless terminals
- High temperature resistant contact carrier
- Nickel plated contacts
- Cable gland Multi-Grip system
- Housing connection with thread and snap-in lock
- Protection degree IP67



Type: 310495



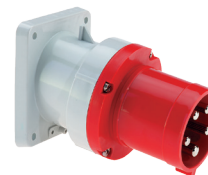
3 MB 109

A <sub>type</sub>	63	125
P <sub>dec</sub>	3/4/5	3/4/5
a ø	110,0	125,0
b	251,0	295,0
c	113,0	128,0
d ø	36,0	50,0

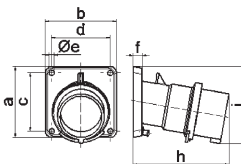
Execution	A	P	V	Art. No.	Qty
QUICK-CONNECT	63	5	400	<b>310495</b>	5
screw	63	3	230	<b>3181</b>	5
screw	63	4	400	<b>3185</b>	5
screw	63	5	400	<b>3124</b>	5
screw	125	3	230	<b>3191</b>	5
screw	125	4	400	<b>3195</b>	5
screw	125	5	400	<b>3199</b>	5

## Panel Mounting Appliance Inlet

- Screw terminals
- High temperature resistant contact carrier
- Nickel plated contacts
- Box terminals
- Flange 107 x 100 mm (63A)
- Protection degree IP44



Type: 2781



5 MB 21

A <sub>type</sub>	63
P <sub>dec</sub>	3/4/5
a	107,0
b	100,0
c	85,0
d	77,0
e ø	6,5
f	12,0
h	155,0
i	118,0

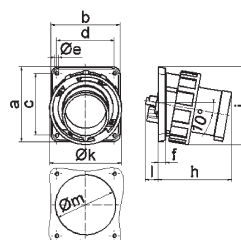
A	P	V	Art. No.	Qty
63	3	230	<b>2771</b>	5
63	4	400	<b>2775</b>	5
63	5	400	<b>2781</b>	5

## Panel Mounting Appliance Inlet

- Screw terminals
- High temperature resistant contact carrier
- Nickel plated contacts
- Box terminals
- Flange 107 x 100 mm (63A)
- Flange 130 x 120 mm (125A)
- Protection degree IP67



Type: 2744



5 MB 56/22

A <sub>type</sub>	63	125
P <sub>dec</sub>	3/4/5	3/4/5
a	107,0	130,0
b	100,0	120,0
c	85,0	108,0
d	77,0	100,0
e ø	6,5	6,5
f	12,0	13,0
h	155,0	130,0
i	118,0	135,0
k	113,5	126,0
l	-	23,0
m ø	-	105,0

A	P	V	Art. No.	Qty
63	3	230	<b>27007</b>	5
63	4	400	<b>27011</b>	5
63	5	400	<b>27017</b>	5
125	3	230	<b>2736</b>	5
125	4	400	<b>2740</b>	5
125	5	400	<b>2744</b>	5



**Quick-Connect Phase Inverter with Multi-Grip**

- Screwless terminals
- Nickel plated contacts
- Cable gland Multi-Grip system
- Housing connection with thread and snap-in lock
- Protection degree IP44



A	P	V	Art. No.
16	4	400	<b>22053</b>
16	5	400	<b>225</b>
32	4	400	<b>22055</b>
32	5	400	<b>227</b>

Type: 227



**Surface Mounting Socket Outlet 7-pole**

- Screw terminals
- High temperature resistant contact carrier
- Nickel plated contacts
- Cable entry 1 x at top (opened), 2 x at bottom (closed)
- Base rotatable by 180°
- Protection degree IP44

A	P	V	Art. No.
16	7	230	<b>11480</b>
16	7	400	<b>11481</b>
32	7	230	<b>11482</b>
32	7	400	<b>11483</b>

Type: 11483



**Phase Inverter with Multi-Grip**

- Screw terminals
- High temperature resistant contact carrier
- Nickel plated contacts
- Cable gland Multi-Grip system
- Protection degree IP44



A	P	V	Art. No.
16	5	230	<b>2286</b>
16	5	400	<b>2271</b>
32	5	230	<b>2287</b>
32	5	400	<b>2288</b>

Type: 2288



**Panel Mounting Socket Outlet 7-pole**

- Straight
- Screw terminals
- High temperature resistant contact carrier
- Nickel plated contacts
- Flange 75 x 75 mm
- Drill holes 60 x 60 mm
- Protection degree IP44

A	P	V	Art. No.
16	7	230	<b>13326</b>
16	7	400	<b>13327</b>
32	7	230	<b>13328</b>
32	7	400	<b>13329</b>

Type: 13329



**Phase Inverter with Multi-Grip**

- Screw terminals
- High temperature resistant contact carrier
- Nickel plated contacts
- Cable gland Multi-Grip system
- Protection degree IP67



A	P	V	Art. No.
16	5	230	<b>2266</b>
16	5	400	<b>2251</b>
32	5	230	<b>2267</b>
32	5	400	<b>2252</b>

Type: 2251



**Plug 7-pole with Multi-Grip**

- Screw terminals
- High temperature resistant contact carrier
- Nickel plated contacts
- Cable gland Multi-Grip system
- Protection degree IP44

A	P	V	Art. No.
16	7	230	<b>210550</b>
16	7	400	<b>21557</b>
32	7	230	<b>210636</b>
32	7	400	<b>210067</b>

Type: 210067



**Phase Inverter - Surface Mounting Appliance Inlet**

- Screw terminals
- High temperature resistant contact carrier
- Nickel plated contacts
- Protection degree IP44



A	P	V	Art. No.
16	5	230	<b>24208</b>
16	5	400	<b>24209</b>
32	5	230	<b>24210</b>
32	5	400	<b>24211</b>

Type: 24209



**Connector 7-pole with Multi-Grip**

- Screw terminals
- High temperature resistant contact carrier
- Nickel plated contacts
- Cable gland Multi-Grip system
- Protection degree IP44

A	P	V	Art. No.
16	7	230	<b>310311</b>
16	7	400	<b>31752</b>
32	7	230	<b>310381</b>
32	7	400	<b>310123</b>

Type: 310123





**Domestic Panel Mounting Socket Outlet**

- Screw terminals
- Hinged lid and injected flange gasket (E,F)
- Nickel plated contacts (E, F, K)
- Protection degree IP54

Earthing Type		Colour	Art. No.	Qty
Country	System			
Germany	F	blue	<b>71094</b>	10
Germany	F	grey	<b>71095</b>	10
Belgium/France	E	blue	<b>7139</b>	10
Belgium/France	E	grey	<b>7142</b>	10
Denmark	K	blue	<b>71071</b>	
UK	G	blue	<b>71142</b>	



**Domestic Panel Mounting Socket Outlet**

- Screwless terminals
- Hinged lid and injected flange gasket
- Nickel plated contacts
- Protection degree IP54

Earthing Type		Colour	Art. No.	Qty
Country	System			
Germany	F	blue	<b>71099</b>	10
Germany	F	grey	<b>71100</b>	10
Belgium/France	E	blue	<b>71118</b>	10
Belgium/France	E	grey	<b>71119</b>	10



Type: 7112

**Domestic Panel Mounting Socket Outlet**

- Screw terminals
- Protection degree IP68

Earthing Type		Colour	Art. No.	Qty
Country	System			
Germany	F	blue	<b>7112</b>	10
Germany	F	grey	<b>7119</b>	10
Belgium/France	E	blue	<b>7153</b>	10
Belgium/France	E	grey	<b>71028</b>	10



Type: 76100

**Domestic Interlocked Mounting Socket Outlet**

- Switched and electrical interlocked
- Protection degree IP67

Earthing Type		Colour	Art. No.	Qty
Country	System			
Germany	F	blue	<b>76100</b>	1



**Domestic Plug**

- Cable gland Multi-Grip system
- Spacious connection area
- Double earthing system (E/F)
- Protection degree IP44

Earthing Type		Colour	Art. No.	Qty
Country	System			
Germany	F	blue	<b>7370</b>	20
Belgium/France	E	blue	<b>7370</b>	20
Germany	F	grey	<b>7371</b>	20
Belgium/France	E	grey	<b>7371</b>	20
Germany	F	black	<b>7372</b>	20
Belgium/France	E	black	<b>7372</b>	20
Germany	F	red	<b>7373</b>	20
Belgium/France	E	red	<b>7373</b>	20



Type: 736

**Domestic Plug**

- Closure cap
- Nickel plated contacts
- With cable gland
- Double earthing system (E/F)
- Protection degree IP68

Earthing Type		Colour	Art. No.	Qty
Country	System			
Germany	F	blue	<b>736</b>	10
Belgium/France	E	blue	<b>736</b>	10
Germany	F	grey	<b>737</b>	10
Belgium/France	E	grey	<b>737</b>	10



**Domestic Connector**

- Cable gland Multi-Grip system
- Spacious connection area
- Optional child protection
- Protection degree IP54

Earthing Type		Colour	Art. No.	Qty
Country	System			
Germany	F	blue	<b>7486</b>	20
Germany	F	grey	<b>7487</b>	20
Germany	F	black	<b>7488</b>	20
Germany	F	red	<b>7489</b>	20
Belgium/France	E	blue	<b>7490</b>	20
Belgium/France	E	grey	<b>7491</b>	20
Belgium/France	E	black	<b>7492</b>	20
Belgium/France	E	red	<b>7493</b>	20




Type: 746


**Domestic Connector**

- Nickel plated contacts
- With cable gland
- Protection degree IP68

Earthing Type		Colour	Art. No.	Qty
Country	System			
Germany	F	blue	<b>746</b>	10
Germany	F	grey	<b>747</b>	10
Belgium/France	E	blue	<b>7416</b>	10
Belgium/France	E	grey	<b>7455</b>	10



Type: 410




Type: 417


### Surface Mounting Socket Outlet

- Screw terminals
- Nickel plated contacts
- Cable entry one at top (open) and two at bottom (closed)
- Base rotatable by 180°
- Protection degree IP44

A	P	V	Art. No.	A	P	V	Art. No.
16	2	24	<b>410</b>	32	2	24	<b>4111</b>
16	3	24	<b>416</b>	32	3	24	<b>4117</b>
16	2	42	<b>411</b>	32	2	42	<b>4112</b>
16	3	42	<b>417</b>	32	3	42	<b>4118</b>



Type: 4354




Type: 4372


### Panel Mounting Socket Outlet

- Straight
- Screw terminals
- Nickel plated contacts
- Flange 75 x 75 mm
- Protection degree IP44

A	P	V	Art. No.	A	P	V	Art. No.
16	2	24	<b>4354</b>	32	2	24	<b>4365</b>
16	3	24	<b>4360</b>	32	3	24	<b>4371</b>
16	2	42	<b>4355</b>	32	2	42	<b>4366</b>
16	3	42	<b>4361</b>	32	3	42	<b>4372</b>



Type: 4422




Type: 4440


### Plug

- Screw terminals
- Nickel plated contacts
- Cable gland Multi-Grip system
- Protection degree IP44

A	P	V	Art. No.	A	P	V	Art. No.
16	2	24	<b>4422</b>	32	2	24	<b>4433</b>
16	3	24	<b>4428</b>	32	3	24	<b>4439</b>
16	2	42	<b>4423</b>	32	2	42	<b>4434</b>
16	3	42	<b>4429</b>	32	3	42	<b>4440</b>



Type: 4522



Type: 4540

### Connector

- Screw terminals
- Nickel plated contacts
- Cable gland Multi-Grip system
- Protection degree IP44

A	P	V	Art. No.	A	P	V	Art. No.
16	2	24	<b>4522</b>	32	2	24	<b>4533</b>
16	3	24	<b>4528</b>	32	3	24	<b>4539</b>
16	2	42	<b>4523</b>	32	2	42	<b>4534</b>
16	3	42	<b>4529</b>	32	3	42	<b>4540</b>

**SURFACE MOUNTING SOCKET OUTLET SWITCHED AND INTERLOCKED / SWITCHED AND FUSED \***




Type: 16603

### Surface Mounting Socket Outlet

- Switched/ interlocked
- Nickel plated contacts
- Mech. double interlocking
- In 0-position lockable (with padlock)
- Protection degree IP44

A	P	h	V	Art. No.	A	P	h	V	Art. No.
16	3	6	230	<b>1619</b>	32	4	6	400	<b>16042</b>
16	4	6	400	<b>16038</b>	32	5	6	400	<b>16043</b>
16	5	6	400	<b>16039</b>	63	4	6	400	<b>16605</b>
					63	5	6	400	<b>16603</b>



Type: 16602

### Surface Mounting Socket Outlet

- Switched/ interlocked
- Nickel plated contacts
- With mech. double interlocking
- In 0-position lockable (with padlock)
- Protection degree IP67

A	P	h	V	Art. No.	A	P	h	V	Art. No.
16	3	6	230	<b>160048</b>	32	4	6	400	<b>160178</b>
16	4	6	400	<b>16040</b>	32	5	6	400	<b>160177</b>
16	5	6	400	<b>16041</b>	63	4	6	400	<b>16604</b>
					63	5	6	400	<b>16602</b>




Type: 17524

### Surface Mounting Socket Outlet

- Switched/ interlocked/ fused
- In 0-position lockable (with padlock)
- Nickel plated contacts
- With C-type MCB and RCCB 40/0.03A for 16A and 32A
- With D02 and RCCB 63/0.03A for 63A
- Protection degree IP44

A	P	h	V	Art. No.	A	P	h	V	Art. No.
16	4	6	400	<b>17323</b>	63	4	6	400	<b>17536</b>
16	5	6	400	<b>17343</b>	63	5	6	400	<b>17537</b>
32	4	6	400	<b>17325</b>					
32	5	6	400	<b>17344</b>					



Type: 17554

### Surface Mounting Socket Outlet

- Switched/ interlocked/ fused
- In 0-position lockable (with padlock)
- Nickel plated contacts
- With C-type MCB and RCCB 40/0.03A for 16A and 32A
- With D02 and RCCB 63/0.03A for 63A
- Protection degree IP67

A	P	h	V	Art. No.	A	P	h	V	Art. No.
16	4	6	400	<b>17329</b>	63	4	6	400	<b>17553</b>
16	5	6	400	<b>17345</b>	63	5	6	400	<b>17554</b>
32	4	6	400	<b>17331</b>					
32	5	6	400	<b>17346</b>					

DNV-GL



Type: 13021

TE Panel Mounting Socket Outlet

- Straight
- Screw terminals
- High temperature resistant contact carrier
- Nickel plated contacts
- Protection degree IP67

A	P	V	h	Art. No.
32	4	400	3	<b>13021</b>

DNV-GL



Type: 11556

Quick-Connect Surface Mounting Socket Outlet

- Screwless terminals
- High temperature resistant contact carrier
- Nickel plated contacts
- Protection degree IP67

A	P	V	h	Art. No.
32	4	400	3	<b>11556</b>

DNV-GL



Type: 16050

TE Surface Mounting Socket Outlet

- Switched
- With mech. double interlocking
- High temperature resistant contact carrier
- Nickel plated contacts
- Protection degree IP67

A	P	V	h	Art. No.
32	4	400	3	<b>16050</b>

DNV-GL



Type: 17026

TE Surface Mounting Socket Outlet

- Switched
- With mech. double interlocking
- High temperature resistant contact carrier
- Nickel plated contacts
- Protection degree IP67

A	P	V	h	Art. No.
32	4	400	3	<b>17026</b>

DNV-GL  
\* type 21485



Type: 21485

TE Plug with Multi-Grip

- Screw or screwless terminals
- High temperature resistant contact carrier
- Nickel plated contacts
- Cable gland Multi-Grip system
- Protection degree IP67

Execution	A	P	V	h	Art. No.
screw terminals	32	4	400	3	<b>21485</b>
screwless terminals	32	4	400	3	<b>2148509</b>

DNV-GL  
\* type 31423



Type: 31423

TE Connector with Multi-Grip

- Screw or screwless terminals
- High temperature resistant contact carrier
- Nickel plated contacts
- Cable gland Multi-Grip system
- Protection degree IP67

Execution	A	P	V	h	Art. No.
screw terminals	32	4	400	3	<b>31423</b>
screwless terminals	32	4	400	3	<b>310426</b>



Type: 210824

Plug with Multi-Grip

- Screw terminals
- Nickel plated contacts
- Cable gland Multi-Grip system
- One-piece housing
- Protection degree IP67

A	P	V	h	Art. No.
32	4	400	3	<b>210824</b>



Type: 310567

Connector with Multi-Grip

- Screw terminals
- Nickel plated contacts
- Cable gland Multi-Grip system
- One-piece housing
- Protection degree IP67

A	P	V	h	Art. No.
32	4	400	3	<b>310567</b>



**TK-Kombi-Socket**



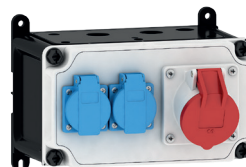
Type: 1010

- With terminals and wiring (ready for installation)
- With integrated domestic socket outlet 16A 230V ~ (system F - german earthing System)
- Protection degree IP44

A	P	V	execution	Art. No.
16	5	400		<b>1010</b>
16	5	400	with fuse holder 5 x 20 mm DIN 41671	<b>109</b>
32	5	400	with fuse holder 5 x 20 mm DIN 41671	<b>1011</b>

**VARIABOX -S IP44**

130 x 230 mm



Type: 89004

**Components:**

- 2 domestic sockets 16A, 230V ~ (system F - german earthing System)
- 1 CEE socket 16A, 400V, 5p

**Cable entry at top and bottom:**  
each with 1x M12, 1x M20, 2x M25

**Connection option:**  
1 cable up to 5 x 6 mm<sup>2</sup>

**Art. No. 89004**

**VARIABOX -M IP44**

260 x 230 mm



Type: 89010

**Components:**

- 2 domestic sockets 16A, 230V ~ (system F - german earthing System)
- 1 CEE socket 16A, 400V, 5p

**Fuse:**

- 2 C-type MCBs 16A, 1p
- 1 C-type MCB 16A, 3p
- 1 RCCB 40/0.03A, 4p

**Cable entry at top and bottom:**  
each with 1x M12, 1x M20, 2x M40

**Connection option:**  
2 cables up to 5 x 25 mm<sup>2</sup>

**Art. No. 89010**

**VARIABOX -L IP44**

390 x 230 mm



Type: 89076

**Components:**

- 2 domestic sockets 16A, 230V ~ (system F - german earthing System)
- 1 CEE socket 16A, 400V, 5p
- 1 CEE socket 32A, 400V, 5p

**Fuse:**

- 2 C-type MCBs 16A, 1p
- 1 C-type MCB 16A, 3p
- 1 C-type MCB 32A, 3p
- 1 RCCB 40/0.03A, 4p

**Cable entry at top and bottom:**  
each with 1x M12, 1x M20, 2x M40

**Connection option:**  
2 cables up to 5 x 25 mm<sup>2</sup>

**Art. No. 89076**

**VARIABOX -XL IP44**

520 x 230 mm



Type: 89095

**Components:**

- 2 domestic sockets 16A, 230V ~ (system F - german earthing System)
- 1 CEE socket 16A, 400V, 5p
- 1 CEE socket 32A, 400V, 5p
- 1 CEE socket 63A, 400V, 5p

**Fuse:**

- 2 C-type MCBs 16A, 1p
- 1 C-type MCB 16A, 3p
- 1 C-type MCB 32A, 3p
- 1 RCCB 63/0.03A, 4p

**Cable entry at top and bottom:**  
each with 1x M12, 1x M20, 2x M40

**Connection option:**  
cables up to 5 x 25 mm<sup>2</sup>

**Art. No. 89095**

**VARIABOX -L DUO IP44**

390 x 460 mm



Type: 89987

**Components:**

- 10 domestic sockets 16A, 230V ~ (system F - german earthing System)
- 1 CEE socket 16A, 400V, 5p
- 1 CEE socket 32A, 400V, 5p

**Fuse:**

- 10 C-type MCBs 16A, 1p
- 1 C-type MCB 16A, 3p
- 1 C-type MCB 32A, 3p
- 1 RCCB 63/0.03A, 4p

**Cable entry at top and bottom:**  
each with 1x M12, 1x M20, 2x M40

**Connection option:**  
2 cables up to 5 x 25 mm<sup>2</sup>

**Art. No. 89987**

**VARIABOX -XL IP67**

520 x 230 mm



Type: 890929

**Components:**

- 2 domestic sockets 16A, 230V ~ (system F - german earthing System)
- 1 CEE socket 16A, 400V, 5p
- 1 CEE socket 32A, 400V, 5p

**Fuse:**

- 2 C-type MCBs 16A, 1p
- 1 C-type MCB 16A, 3p
- 1 C-type MCB 32A, 3p
- 1 RCCB 40/0.03A, 4p

**Cable entry at top and bottom:**  
each with 1x M12, 1x M20, 2x M40

**Connection option:**  
2 cables up to 5 x 25 mm<sup>2</sup>

**Art. No. 890929**

**VARIABOX -XXL IP67**

650 x 230 mm



Type: 890936

**Components:**

- 3 domestic sockets 16A, 230V ~ (system F - german earthing System)
- 2 CEE sockets 16A, 400V, 5p
- 1 CEE socket 32A, 400V, 5p

**Fuse:**

- 3 C-type MCBs 16A, 1p
- 2 C-type MCBs 16A, 3p
- 1 C-type MCB 32A, 3p
- 1 RCCB 63/0.03A, 4p

**Cable entry at top and bottom:**  
each with 1x M12, 1x M20, 2x M40

**Connection option:**  
2 cables up to 5 x 25 mm<sup>2</sup>

**Art. No. 890936**

**MODBOX® -Midi**  
384 x 255 mm  
Rubber



Type: 5401884

**Components:**  
6 domestic sockets 16A, 230V ~  
(system F - german earthing System)

**Fuse:**  
6 C-type MCBs 16A, 1p  
1 RCCB 40/0.03A, 4p

**Cable entry at top and bottom:**  
each with 2x M40

**Connection option:**  
2 cables up to 5 x 25 mm<sup>2</sup>

**Art. No. 5401884**

**MODBOX®**  
420 x 300 mm  
Rubber



Type: 5401274

**Components:**  
2 domestic sockets 16A, 230V ~  
(system F - german earthing System)  
1 CEE socket 16A, 400V, 5p  
1 CEE socket 32A, 400V, 5p

**Fuse:**  
2 C-type MCBs 16A, 1p  
1 C-type MCB 16A, 3p  
1 C-type MCB 32A, 3p  
1 RCCB 63/0.03A, 4p

**Cable entry at top and bottom:**  
each with 2x M40

**Connection option:**  
2 cables up to 5 x 25 mm<sup>2</sup>

**Art. No. 5401274**

**Mobile combination unit**  
250 x 210 mm, portable  
Rubber



Type: 522590

**Components:**  
6 domestic sockets 16A, 230V ~  
(system F - german earthing System)  
2 CEE sockets 16A, 400V, 5p  
1 CEE socket 32A, 400V, 5p  
1 rotary field measuring device

**Fuse:**  
3 C-type MCBs 16A, 1p  
1 C-type MCB 16A, 3p  
1 RCCB 40/0.03A, 4p

**Cable entry/inlet:**  
CEE phase inverter 32A, 400V, 5p

**Art. No. 522590**

**Mobile combination unit**  
320 x 245 mm, portable  
Rubber



Type: 5202245

**Components:**  
4 domestic sockets 16A, 230V ~  
(system F - german earthing System)  
2 CEE sockets 16A, 400V, 5p  
2 CEE sockets 32A, 400V, 5p

**Fuse:**  
2 C-type MCBs 16A, 1p  
2 C-type MCBs 16A, 3p  
2 C-type MCBs 32A, 3p  
1 RCCB 63/0.03A, 4p

**Cable entry/inlet:**  
CEE plug 63A, 400V, 5p with  
cable 3 m H07RN-F5G10

**Art. No. 5202245**

**Uni-Block**  
140 x 140 mm, portable



Type: 57148

**Components:**  
2 domestic sockets 16A, 230V ~  
(system F - german earthing System)  
2 CEE sockets 16A, 400V, 5p

**Cable entry/inlet:**  
CEE plug 16A, 400V, 5p with  
cable 2 m H07RN-F5G2,5

**Art. No. 57148**

**Uni-Block**  
140 x 140 mm, hanging



Type: 57076

**Components:**  
3 domestic sockets 16A, 230V ~  
(system F - german earthing System)  
1 CEE socket 16A, 400V, 5p

**Cable entry:**  
1x M25

**Connection option:**  
1 cable up to 5 x 10 mm<sup>2</sup>

**Art. No. 57076**

**Mobile combination unit**  
365 x 120 mm, portable



Type: 530003

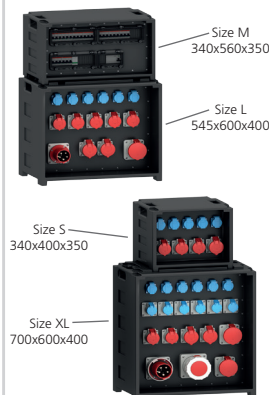
**Components:**  
2 domestic sockets 16A, 230V ~  
(system F - german earthing System)  
1 CEE socket 16A, 400V, 5p

**Fuse:**  
2 C-type MCBs 16A, 1p  
1 RCCB 40/0.03A, 4p

**Cable entry/inlet:**  
CEE plug 16A, 400V, 5p with  
cable 2 m H07RN-F5G2,5

**Art. No. 530003**

**EVOBOX**  
by Bals



**The new EVOBOX series**

- Light and easy-to-handle, using hard Polyethylene
- Overall protection degree of the distributor is IP54
- High mechanical and thermal capacity
- Perfectly stackable
- Maintenance-free Quick-Connect technology for CEE and domestic sockets
- Available in 4 different sizes
- Fuse elements protected under robust operating window
- Available in 4 different sizes

**Configuration on request**



Bals Elektrotechnik GmbH & Co. KG  
D-57399 Kirchhundem-Albaum

Phone: +49 27 23/771-0  
Fax: +49 27 23/771-330

E-mail: [info@bals.com](mailto:info@bals.com)  
Internet: [www.bals.com](http://www.bals.com)